



# Montana

*"Unparalleled Comfort and Luxury"*



Montana

[www.keystone-montana.com](http://www.keystone-montana.com)





# Montana's New Arched Roof



*Hickory Edition*

Montana's luxurious new decors and easy living features provide the comfort and luxury consistent with Montana's reputation being the #1 selling fifth wheel for ten years straight in North America. None of the details have been overlooked or forgotten. Plush residential furniture, state of the art remotely controlled electronics, and solid hardwood hickory cabinetry only highlight the all new Montana. Montana's luxurious living area has a 72" residential sofa which is upholstered in beautiful heavy grade fabric. The sofa also converts to a true 60" x 80" queen size air bed with the touch of a switch. There is 5 cubic feet of storage space in the base of the sofa. Perfect for storing sheets and blankets. Standard on every Montana are two 32" wide, high back glider recliners complete with lumbar cushions.





## Decor Packages



*Mocha*



*Cobalt*



*Black Thorn*



*An optional 5100 BTU electric fireplace is available on most models. Imagine relaxing in your favorite chair at the end of the day enjoying the warmth of a fire! Most Montana models give you the option of having a computer workstation for surfing the web or catching up on your e-mail. Extra deep drawers are available to hang and protect your important file folders. The cabinets above the work station add even more storage space. The spaciousness of the Montana is unparalleled. The slide room ceiling height is 6' - 6"... An industry first. Until you have experienced the sheer openness of the Montana, you have no idea what your are missing!*







## *Montana Kitchens*

*Cuisine is king in the Montana... and you will have no problem preparing any meal. Dual ovens are standard in the Montana. The full sized 30" OTR (over the range) microwave is positioned at the ideal height for your safety. The microwave is vented outside discharging fumes and condensation. Your Montana also has a 22 inch conventional oven. In addition, there is a flush mounted, automatic ignition, 3 burner cook top with a cover for more counter space. Also, the kitchen has a large 8 cubic foot refrigerator with an adjustable thermostat which is standard, while many models offer an optional 4 door 12 cubic foot refrigerator. The drawers in the Montana have full extension steel roller bearing drawer guides. This allows the rear of the drawer to extend beyond the counter top for easy accessibility. The cabinet door hardware is 5" designer pulls...just like in your home, large enough to fit your whole hand in. We've even added toe kicks at the bottom of most Montana cabinets, allowing you closer access to your work space.*



# Montana Kitchens

Every Montana comes with beautiful Corian® brand counter tops and deep full sized sinks. The stylish, single lever faucet pulls out to become a sprayer. The key to a great kitchen is organization, and that's exactly what the Montana delivers. Depending on the floor plan, you can have up to 50 drawers and cabinets...thats more space than any other coach in the industry. The overhead cabinets are 32" - 36" tall and at least 13" deep allowing for storage of all of your full sized plates and serving dishes.



We've even added a raised edge on the front of all our cabinets to prevent content from sliding forward and falling out while traveling. Our exclusive, free-standing dining table is extremely versatile, it slides and swivels, allowing you to arrange the table just about any way you like. The dining table even has a leaf extension and pull out drawer. Just another example how Montana merges practicality with elegance.



Hickory Edition



## Montana Bed Rooms

Montana's wide body bedroom suites are nothing short of extraordinary. When you enter the room, you will instantly recognize the spaciousness accomplished by our deeper slide. Despite the floor plan you may be viewing, the 6' 8" tall Radius ceiling height will give you a feeling of spaciousness. These higher ceilings allow for larger cabinets, wardrobes and windows. Montana's bedrooms have large 30" deep cedar lined closets. Your clothes will stay fresh even on the longest of trips. The armoire is extremely versatile. It has removable shelves or can be converted for a washer / dryer. The washer / dryer prep is already in place. There is even a hidden storage area to securely store your valuables.



## Montana Bath Rooms

All of our bath rooms have residential style solid surface vanity tops with oversized molded sinks and a back splash. The sink has an attractive single lever faucet that coordinates with the rest of the other fixtures. Unlike most other brands, the Montana vanity is a full 35 inches tall which is consistent with residential vanities. There is a large medicine cabinet over the vanity which has a custom 3 bulb decorative light. Each unit comes with a standard 36" wide garden tub with an adjustable height hand held shower head, a seat, three shelves and an integrated wash cloth holder. The glass shower surround has an attached towel rack on the door. The skylight is standard on all Montana's, allows natural light into the bathroom. Montana features a residential style porcelain toilet with a foot flush.





# Montana

## “Big Sky Package”



**“G” Range  
Radial Tires**



**Radius  
Fiberglass Shower**

**Six Point Automatic Hydraulic Leveling**



**Full Body Paint Black and Gray**



**Full Body Paint Black and Tan**

### **Big Sky Package Eligible Units**

**3400RL 3455SA**

**3580RL 3585SA**

**3625RL 3665RE**

**3700RL 3750FL**



*Hickory Edition*



### **Big Sky Package Items:**

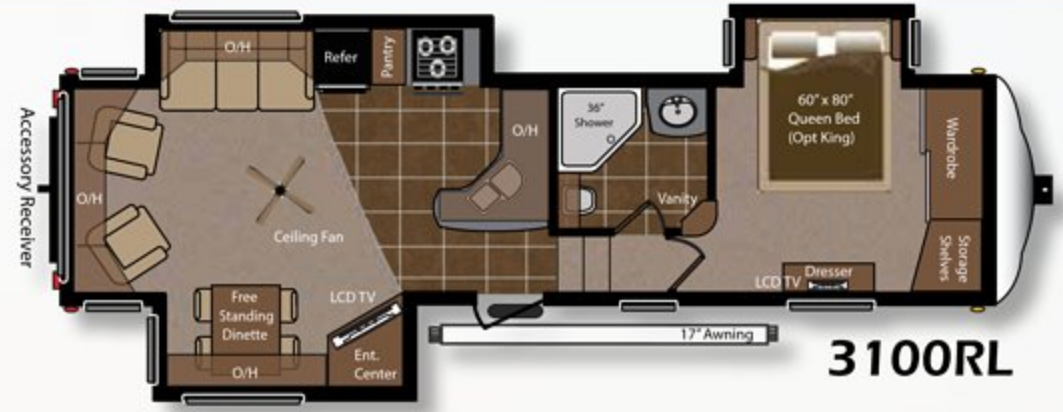
- ★ **Full Body Paint**
- ★ **“G” Range Radial Tires**
- ★ **Six Point Auto Hydraulic Leveling**
- ★ **Radius Fiberglass Shower**



# Montana Floor Plans



**3000RK**



**3100RL**



**3150RL**



**3400RL**

Big Sky Package Eligible



**3455SA**

Big Sky Package Eligible



**3580RL**

Big Sky Package Eligible



**3585SA**

Big Sky Package Eligible



**3625RL**

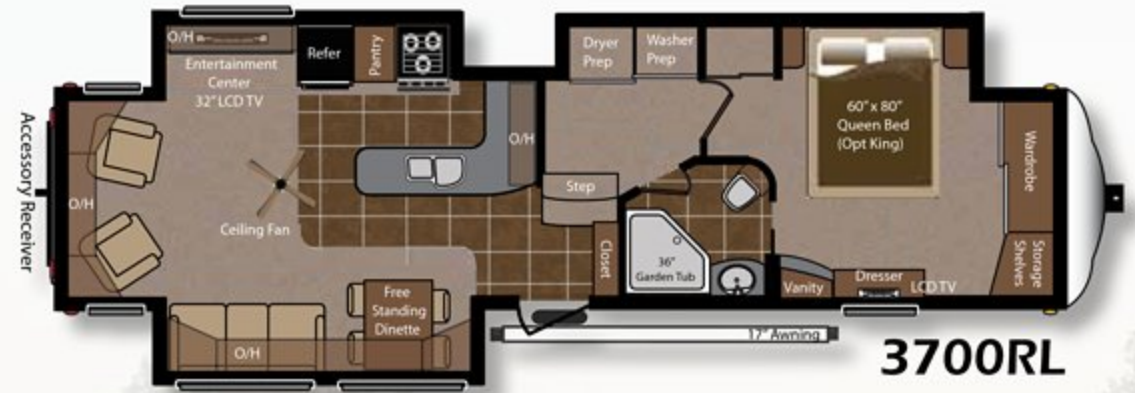
Big Sky Package Eligible



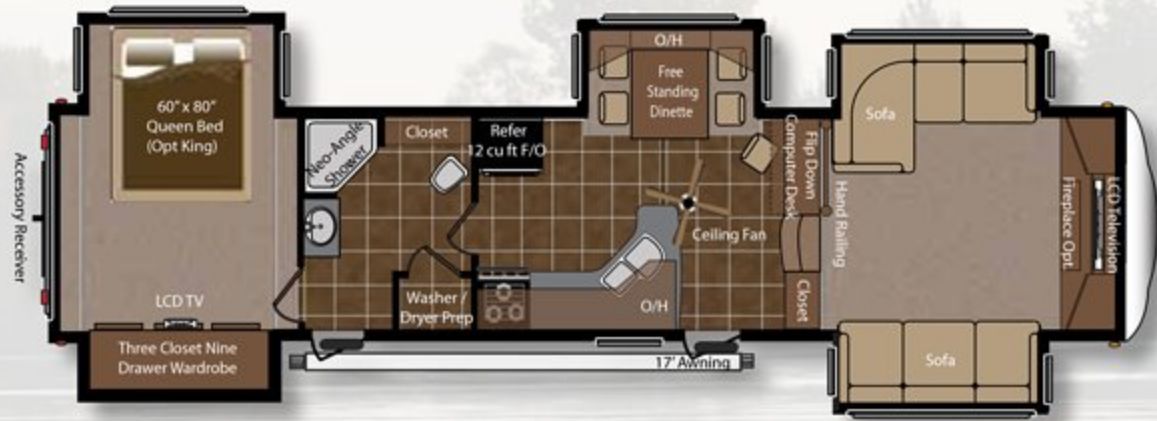
# Floor Plan Specifications



Big Sky Package Eligible



Big Sky Package Eligible



Big Sky Package Eligible

3750FL



MODEL	3000RK	3100RL	3150RL	3400RL	3455SA	3580RL	3585SA	3625RE	3665RE	3700RL	3750FL
Shipping Weight	10,830	11,290	11,115	12,346	12,187	11,671	11,671	TBD	12,321	12,560	12,560
Carrying Capacity	3270	2495	2735	3294	3373	3889	3889	TBD	3224	2940	2940
Hitch	2100	2235	1850	2140	2060	2060	2060	TBD	2045	2135	2240
Exterior Length	35' 6"	35'	34' 5"	37' 6"	37' 4"	37' 2"	38' 6"	37' 3"	37' 6"	38' 6"	38' 7"
Exterior Width	8'	8'	8'	8'	8'	8'	8'	8'	8'	8'	8'
Exterior Height - Top of A/C	12' 9"	12' 9"	12' 9"	12' 9"	12' 9"	12' 9"	12' 9"	12' 9"	12' 9"	12' 9"	12' 9"
Fresh Water Capacity	66	66	66	66	66	66	66	66	66	66	66
Waste Water Capacity	50	50	50	50	50	50	50	50	50	50	50
Grey Water Capacity	93	93	93	93	93	93	93	93	93	93	93
LPG Capacity (lb...)	60	60	60	60	60	60	60	60	60	60	60
Tire Size - Montana	235/80R16E	235/80R16E	235/80R16E	235/80R16E	235/80R16E	235/80R16E	235/80R16E	235/80R16E	235/80R16E	235/80R16E	235/80R16E
Tire Size - Big Sky	N/A	N/A	N/A	235/85R16G	235/85R16G	235/80R16G	235/85R16G	235/85R16G	235/85R16G	235/85R16G	235/85R16G



1. Rear Ladder
2. Vented Attic
3. 15,000 BTU A/C
4. One-Piece EPDM Rubber Roof with 12 Year Warranty
5. Aluminum Radius Roof Transition Molding
6. 3/8" Roof Decking
7. Radiant R-38 Insulation (97% Heat Reflection)
8. Fiberglass Insulation
9. Aluminum Wrapped AC Duct
10. Ceiling Decking with Vinyl
11. 5" Fabricated Galvanized Steel Truss Rafters on 16" Centers

27. Rear Accessory Hitch
28. Electric Rear Jacks
29. DARCO Wrapped Main Floor Moisture Barrier
30. Astro-Foil Insulation
31. Fiberglass Insulation
32. One-Piece Fluted Polypropylene Fully Enclosed Sub-Floor
33. 3" Large-Capacity Heat Duct
34. Heavy Duty Wet Bolt Kit and 8-Lug Wheels with Easy Lube Axles
35. MOR/ryde® Suspension
36. Enclosed and Insulated Water Lines

37. Powder-Coated 10" Steel "Rolled" I-Beam
38. Residential Linoleum
39. Full Radius-Wrap Aluminum Enclosure
40. 3" Welded Aluminum Floor
41. Drop-Frame Chassis Design with Flat-Floor Storage
42. Dual 30 Lbs. L.P. Bottles on Each Side
43. Easy Access Adjustable Snap Jack Pins
44. 5/8" Seamless Floor Decking
45. Residential Carpet Pad
46. Residential-Grade Carpeting with Stain Protection
47. Extended Hitch Pin

SEWALLS R9

12. Fold-Away Grab Handle
13. 30" x 74" Entry Door with Window
14. 2" Welded Aluminum Wall Studs
15. Interior Decorator Board
16. Electro-Galvanized Sheet (EGS) Metal Backing Strips
17. High Density Solid Block Insulating Foam
18. 1/8" Luan Board
19. 2nd Layer of Luan with Staggered Seams
20. Gel-Coated Fiberglass (Hi-Gloss is Optional)
21. Heavy Duty Insulated Baggage Doors
22. Exterior Convenience Center
23. Electric Patio Awning
24. Security Light
25. Fiberglass Front Cap with Improved Turning Radius and Hitch Vision
26. Side-Mounted Hydraulic Selector Valves



Montana is zero degree tested and approved for four season living so you can enjoy your fifth wheel year round. Heres why:

- \* - Montana's arctic insulation package includes Radiant Technology insulation and a layer of R-14 fiberglass insulation in the roof. That's equivalent to R-38!
- \* - The sidewalls are constructed of solid block foam which is laminated by three layers of luan and an exterior of gel-coated fiberglass.
- \* - The floor is insulated with a layer of 97% Heat Reflective Astro-Foil and a layer of fiberglass insulation equaling an R21 value!
- Water lines are enclosed, insulated and heated.



Turning Radius

**Max Turn Front Cap Aerodynamics**  
 Montana's front cap has been completely re-engineered utilizing an aviation style shape dramatically reducing the drag coefficient for maximum fuel economy.

Construction



view a video at [www.keystone-montana.com](http://www.keystone-montana.com)



## MONTANA OPTIONS

- \* King size bed (72" x 80")
- \* Neo-angle shower IPO garden tub
- \* High-back desk chair Sofa table
- \* Electric fireplace
- \* End table and lamp
- \* 30" OTR convection microwave oven
- \* 12 cu. ft. Four Door Refrigerator
- \* Booth dinette IPO free standing dinette
- \* Slide topper awning package

- \* High gloss gel coated fiberglass exterior
- \* Dual pane safety glass windows
- \* MOR/ryde® hitch pin
- \* Ducted 2nd 13,500 BTU A/C
- \* Fantastic fan vent (locations vary)
- \* Generator ready (Onan 5.5 kw specs.)
- \* Onan Marquis Gold 5.5 kw L.P. generator
- \* Central vacuum
- \* Leather Recliners
- \* Leather Air Mattress Hide-a-Bed Sofa

## MOUNTING TO MONTANA PACKAGE

- \* Queen (60 x 80) Innerspring Pillow Top Mattress
- \* Central Exterior Convenience Center
- \* E-Z Lube Axles with 8 Lug Wheels
- \* MOR/ryde® Rubber Suspension System
- \* Arctic Insulation Package
- \* Vented Attic
- \* Deep Tint Safety Glass Windows
- \* 15,000 BTU A/C with Quick Cool
- \* Air Mattress Hide-a-Bed Sofa
- \* Washer/Dryer Prep
- \* Ceiling Fan with Light Kit
- \* (2) Flush Mount Kitchen Sink Covers
- \* Cedar Lined Front Closet
- \* Dual Reading Lights Over the Bed
- \* Wire and Frame for 2nd A/C with Remote Sensor and Dual Zones
- \* Rear Accessory Hitch
- \* 1/2 Turn Hydraulic Selector Valves
- \* (2) High Back Recliners

- \* Stamped Steel Roof Rafters
- \* Welded, Aluminum Framed Walls and Floors
- \* R-9 Laminated Sidewalls with Dual Layered Luan
- \* FM/CD/DVD Player with 5.1 Surround Sound
- \* RG-6 Satellite Prep
- \* 50 Amp Service
- \* Raised Panel Refer Front
- \* Digital TV Antenna with Booster
- \* Deluxe Porcelain Toilet
- \* Black Tank Flush
- \* Sky Dome over the Tub
- \* Aluminum Wheels
- \* Range Cover
- \* Fold Away Entry Handle
- \* Rear Roof Ladder
- \* Dual Patio Security Lights
- \* Under Mount Spare Tire and Carrier
- \* Hidden Safe
- \* Heavy Duty Wet Bolt Kit

## HICKORY EDITION PACKAGE

- \* Slam Latch Pass Through Storage
- \* Max Turn Front Cap and Radius Frame with Hitch Vision™
- \* Radius Rear Cap with Easy Flow Graphics
- \* Radiant Technology Roof Insulation (R-38 Total)
- \* 30" Deep Bedroom Slide Out (6" Deeper)
- \* 6'-6" Tall Main Slide Outs (2" Taller)
- \* Easy Store Rotating Sewer Boom (Most Models)
- \* Generation II Easy Set Remote Control System
- \* Hickory Cabinet Doors and Drawers
- \* Hickory Stiles, End Panels and Crown Molding
- \* Solid Hardwood Slide Out Fascia
- \* 30" OTR Microwave with Built in Range Hood
- \* Automatic Entry Light

- \* Enormous Drop Frame Pass thru Storage Compartment
- \* Solid Surface Kitchen Counter Tops and Sink Covers
- \* Solid Surface Bathroom Lavatory with Molded Sink
- \* Seamless Underbelly Enclosure
- \* Free Standing Dinette with Swiveling Top
- \* 32" HD LCD TV with Pull Out Tray
- \* 90 Amp Converter
- \* 12 Gallon DSI Gas/Electric Water Heater
- \* 50 Gallon Black Tank Capacity
- \* 93 Gallon Gray Tank Capacity

## MONTANA STANDARDS

- \* 50 amp detachable marine power cord
- \* Systems monitor panel
- \* 35,000 BTU furnace with auto ignition and high capacity in-floor ducting
- \* Fresh water capacity = 66 gal.
- \* Carbon monoxide detector
- \* Four Step Entry
- \* Smoke Detector

## Montana's New Arched Roof



Montana's 5" Galvanized Roof Trusses have been Designed in an Arched Shape Creating the Elegant Arched Ceiling in the New Montana.

- \* Montana's Exclusive Industry First Arched Roof
- \* Provides a Unique Interior Feel and Look!
- \* Five Inch Insulation Consistent Throughout the Roof
- \* Arched Rafters Provide Greater Roof Weight Distribution
- \* Increased Interior Height Throughout the Montana

Notes:



[www.keystone-montana.com](http://www.keystone-montana.com)



# "Ultimate Towability By Applying "Max Turn" Technology"

At Montana, we have designed a patent pending integrated frame and cap design. Not only is it the most aerodynamic front cap, it's downright beautiful. With our "Max Turn" technology, making a 90 degree turn on the street is no problem. In fact, the Montana has an incredible 79 degree truck to fifth wheel angle. It is the best in the industry. With "Max Turn", pulling or backing is no longer a burden.

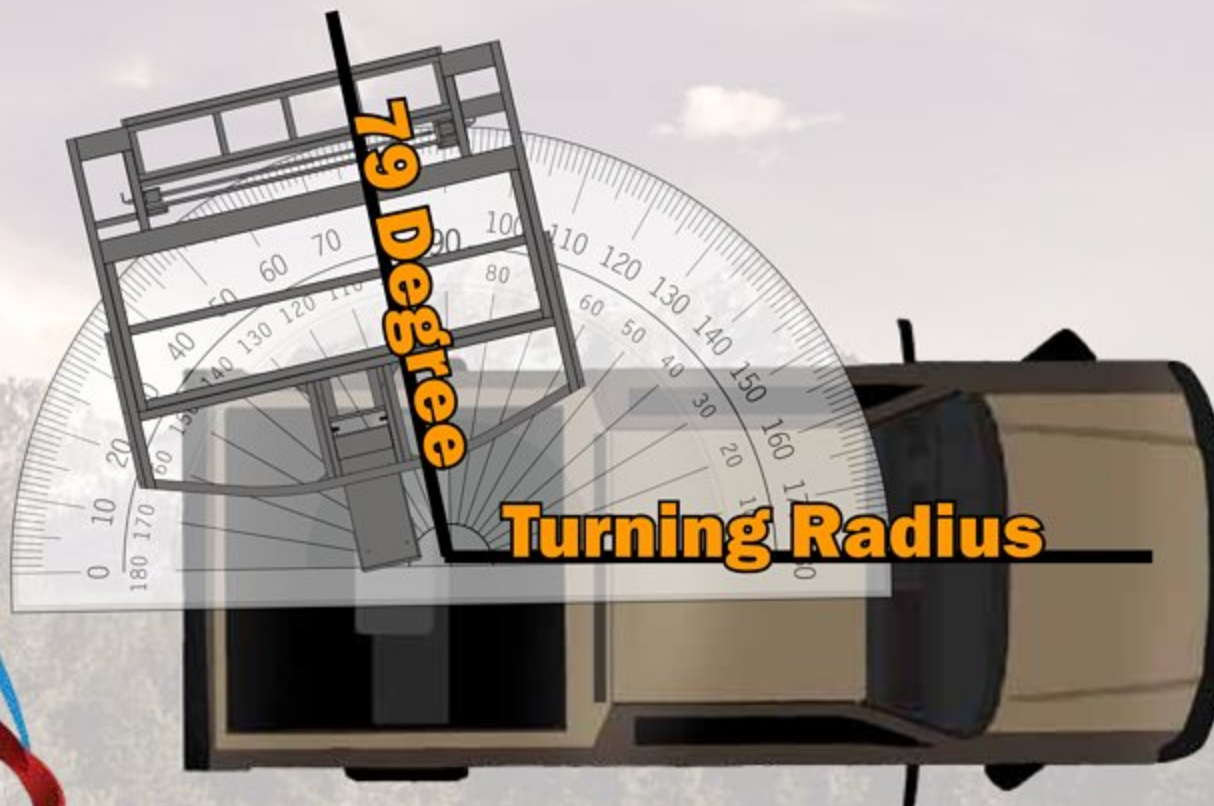


Our optional Mor/ryde pin box system provides a cushioning sensation despite the harshness of the road. No more clunking sounds during stop/start..

## Montana



Montana's Mor/ryde suspension system is state of the art in the industry. This system provides 4" of axle travel with superior equalization for a smoother ride and better control.



**Easy Set Remote Control System**  
Montana's "Easy Set Remote Control System" simplifies setup and operation. The front and rear jacks, electric awning, hydraulic slide outs and patio security lights are all controlled from your remote. All of these functions are also available using manual switches inside or outside of the unit.



### Max Turn Front Cap Aerodynamics

Montana's front cap has been completely re-engineered utilizing an aviation style shape dramatically reducing the drag coefficient for maximum fuel economy.

Visit the Montana Owner's Club web site

Independently created and maintained by Montana fifth wheel owners.

[www.montanaowners.com](http://www.montanaowners.com)



2642 Hackberry Drive  
Goshen, IN 46526  
574-535-2100



View the videos available at  
[www.keystone-montana.com](http://www.keystone-montana.com)

Product information is as accurate as possible as of the date of publication of this brochure. Features, floor plans, and specifications are subject to change without notice. Please also consult Keystone's web site at [keystonerv.com](http://keystonerv.com) for more current product information and specifications. Tow Vehicle Disclaimer: CAUTION: Owners of Keystone recreational vehicles are solely responsible for the selection and proper use of tow vehicles. All customers should consult with a motor vehicle manufacturer or their dealer concerning the purchase and use of suitable tow vehicles for Keystone products. Keystone disclaims any liability or damages suffered as a result of the selection, operation, use or misuse of a tow vehicle. KEYSTONE'S LIMITED WARRANTY DOES NOT COVER DAMAGE TO THE RECREATIONAL VEHICLE OR THE TOW VEHICLE AS A RESULT OF THE SELECTION, OPERATION, USE OR MISUSE OF THE TOW VEHICLE. January 2011