

**BIG SKY**  
LIMITLESS LUXURY.

*10th Anniversary Edition*

**BIG SKY** 10<sup>TH</sup> Anniversary





10TH ANNIVERSARY EDITION

## Wide Open Spaces

Big Sky by Montana is a place of wide open spaces abounding in innovative features and fine furnishings. The curved stairwell in model 365REQ illustrates Big Sky's elegant residential design. Another unique feature is the 42" LCD TV that stores behind the fireplace cabinet when not in use and raises up for viewing using an electric lift mechanism.





10TH ANNIVERSARY EDITION



## Culinary Delight

Big Sky's beautifully designed kitchen is equipped with all the modern conveniences of your home kitchen including a large 12 cubic foot refrigerator, 30" convection microwave, 22" oven and residential-size cabinets for ample storage.

## Private Comfort

Awake to the blissful comfort of the Big Sky bedroom suite, enticing you to linger a while longer. With the bathroom on the same level, there are no steps to maneuver from bed to bath. A plush king size bed, spacious cedar-lined wardrobe, beautiful marbled shower, plus many extra amenities create the ambience of fine resort living.



340RLQ: GOLDEN VISTA: SOFA & DINETTE ▼

INTERIORS



10TH ANNIVERSARY EDITION

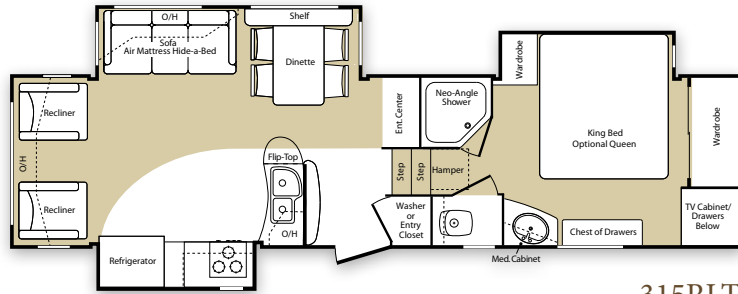
# Endless Luxury

Big Sky's boundless innovation creates a spacious interior that enhances leisure living. The pedestal-free, wall-mounted dinette table provides unencumbered legroom for more comfortable dining, and the 32" HD LCD TV sits on a pull-out swivel tray for optimum viewing from wherever you're seated. These are just two of the many great features that propel Big Sky beyond the ordinary.

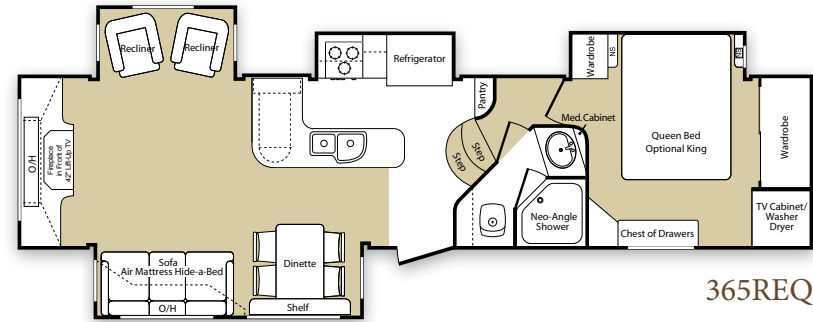


*Shown with Optional Leather Sofa & Recliners*

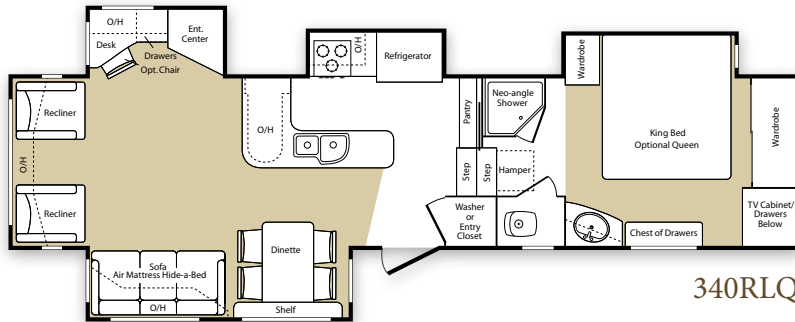
BIG SKY FLOORPLANS ▼



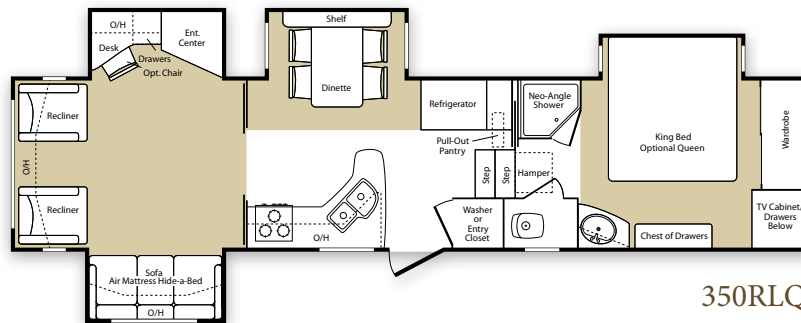
315RLT



365REQ



340RLQ



350RLQ

Specifications

| CAPACITIES           | 315RLT | 340RLQ | 350RLQ | 365REQ |
|----------------------|--------|--------|--------|--------|
| Fresh Water Capacity | 66     | 66     | 66     | 66     |
| Waste Water Capacity | 43     | 43     | 50     | 50     |
| Grey Water Capacity  | 86     | 86     | 93     | 93     |

| DIMENSIONS        | 315RLT     | 340RLQ     | 350RLQ     | 365REQ     |
|-------------------|------------|------------|------------|------------|
| Exterior Length   | 34' 8"     | 38' 10"    | 38' 10"    | 38' 4"     |
| Exterior Width    | 8'         | 8'         | 8'         | 8'         |
| Height—Top of A/C | 12' 9"     | 12' 9"     | 12' 9"     | 12' 9"     |
| Tire Size         | 235/85R16E | 235/85R16E | 235/85R16E | 235/85R16E |

| WEIGHTS           | 315RLT | 340RLQ | 350RLQ | 365REQ |
|-------------------|--------|--------|--------|--------|
| Shipping Weight   | 11,460 | 13,315 | 12,520 | 13,065 |
| Carrying Capacity | 3,095  | 3,220  | 3,675  | 3,385  |
| Hitch Weight      | 2,555  | 2,535  | 2,195  | 2,450  |



# CONSTRUCTION FEATURES THAT MAKE THE DIFFERENCE ▼

## Roof R-14

1. Rear Ladder
2. Vented Attic
3. 15,000 BTU A/C
4. One-Piece EPDM Rubber Roof with 12 Year Warranty
5. Aluminum Radius Roof Transition Molding
6. 3/8" Roof Decking
7. Fiberglass Insulation
8. Wire Harness
9. Aluminum Wrapped A/C Duct
10. Ceiling Decking with Vinyl
11. 5" Fabricated Galvanized Steel Truss Rafters on 16" Centers

## Sidewalls R-9\*

12. Fold-Away Grab Handle
13. 30" x 74" Entry Door with Window
14. 2" Welded Aluminum Wall Studs
15. Interior Decorator Board
16. Electro-Galvanized Sheet (EGS) Metal Backing Strips
17. High Density Solid Block Insulating Foam
18. Second Layer 1/8" Luan Board with Seams Staggered
19. 1/8" Luan Board
20. Gel-Coated Fiberglass
21. Heavy Duty Insulated Baggage Doors
22. Exterior Convenience Center
23. Aluminum Wrapped Electric Patio Awning
24. Scare Light
25. Fiberglass Front Cap with Improved Turning Radius and Hitch Vision™
26. Side-Mounted Hydraulic Selector Valves

\*CNC Machined Sidewalls for Precision Fit and Finish

## Floor R-21

27. Rear Accessory Hitch
28. Electric Rear Jacks
29. DARCO Wrapped Main Floor Moisture Barrier
30. Astro-Foil Insulation (97% Heat Reflection)
31. Fiberglass Insulation
32. One-Piece Fluted Polypropylene Fully Enclosed Sub-Floor
33. 3" Large-Capacity Heat Duct
34. Heavy Duty 8-Lug Wheels with Dexter E-Z Lube® Axles
35. MOR/ryde® Suspension
36. Enclosed and Insulated Water Lines
37. Powder-Coated 10" Steel "Rolled" I-Beam
38. Residential Linoleum
39. Full Radius-Wrap Aluminum Enclosure
40. 3" Welded Aluminum Floor
41. Drop-Frame Chassis Design with Flat Floor Storage
42. LP Bottle
43. Easy Access Adjustable Snap Jack Pins
44. 5/8" Seamless Floor Decking
45. Residential Rebond Carpet Pad
46. Residential-Grade Carpeting with Stain Protectant
47. Extended Hitch Pin



# ZERO DEGREE

Big Sky is zero degree tested and approved for four-season living so you can enjoy your Big Sky fifth wheel year-round.

- Vented attic
- Enclosed heated dump valves
- Enclosed heated holding tanks
- Insulated water lines along furnace duct
- Digital thermostat
- Heated toilet room
- Arctic insulation package with higher R-values
- Enclosed low point drain shut-off valves

### ◀ Cheat The Wind

Big Sky's new aerodynamic front cap provides more stable, fuel-efficient towing.

### MOR/ryde® Suspension ▶

This unique suspension system reduces road shock by 30% for a smoother, more comfortable ride.



### Easy Set Remote Control System ▶

The control is in your hands with the convenient Easy Set Control System. Control the rear and front jacks, electric awning, hydraulic slide-out, and patio scare lights all from your remote control key chain!

\*Now includes dual switch technology for operation with or without remote control!



| EXTERIOR   |                  |  |                  |  |                  |
|--|------------------|--|------------------|--|------------------|
| "Big Sky" full painted graphics  | O                | MOR/ryde® hitch pin  | O                | Raised hardwood front refrigerator panels  | V                |
| "Big Sky" exterior paint and graphics  | P                | Aluminum wheels  | V                | High output range with automatic ignitor   | S                |
| Aerodynamic front cap with Hitch Vision™   | P                | INTERIOR   |                  | Range cover  | V                |
| Welded, totally aluminum-framed walls, floors and slide-outs   | V                | 32" HD LCD TV with pull-out swivel tray (42" HD LCD TV with electric lift on "Big Sky" rear entertainment model)   | 10 <sup>th</sup> | 22" oven with broiler  | S                |
| 5" galvanized stamped steel roof rafters   | V                | FM/CD/DVD player with 5.1 surround sound   | V                | BATHROOM   |                  |
| 2" laminated, gel-coated Filon™ sidewalls with dual layered luan (R-9)   | S                | Digital TV antenna with booster  | V                | Marbled shower with adjustable pewter shower head and soap holder  | P                |
| Arctic Insulation Package: R-14 roof and R-21 floor  | P                | Air mattress hide-a-bed with wood trim   | P                | Skydome over shower  | V                |
| Vented attic   | P                | (2) designer recliners with wood trim  | P                | Corian® bathroom lavatory top, oversized one-piece molded sink and backsplash  | 10 <sup>th</sup> |
| Insulated radius baggage doors with inside fasteners   | S                | Soft touch leather recliner IPO cloth  | O                | Single lever faucet  | S                |
| Radius wrap lower walls  | S                | 2nd soft touch leather recliner IPO cloth  | O                | Adult height vanity with large base cabinet  | S                |
| Seamless, one-piece underbelly enclosure   | 10 <sup>th</sup> | Soft touch leather sofa IPO cloth  | O                | Bright decorative vanity light   | S                |
| Heated, enclosed and insulated water lines, dump valves and holding tanks tested for 0° usage  | S                | Hardwood stiles, cabinet doors and end panels with hidden hinges and pewter hardware, "Big Sky" designer slide room facia, crown molding at ceiling and accent trim on interior window frames. | 10 <sup>th</sup> | Residential-style medicine cabinet   | S                |
| Seamless, one-piece 5/8" Dynaspan™ floor decking   | S                | Residential full extension steel drawer guides   | S                | Porcelain toilet with foot pedal flush   | V                |
| "Wide Stance" front jack legs with adjustable snap jack pins   | S                | High density residential carpeting   | S                | Heated commode room with 12v exhaust fan   | S                |
| Rear accessory hitch   | V                | 7 lb. Rebond carpet padding  | S                | Neo-angle shower IPO garden tub  | O                |
| Rear roof ladder   | V                | Designer linoleum kitchen floor and entryway   | S                | BEDROOM  |                  |
| Rear back-up lights  | S                | True flush floor main slide rooms in living area with R-14 floor insulation  | S                | Single level bedroom/bathroom suite  | S                |
| (2) patio scare lights on separate switches  | V                | 6' 3" extra tall main slide rooms with 15" tall, 14" deep overhead cabinets in living area   | S                | Over stuffed duvet bedspread with (2) pillow shams   | 10 <sup>th</sup> |
| MOR/ryde® rubber suspension system   | S                | Blackout day/night shades  | 10 <sup>th</sup> | Residential-sized chest of drawers with hidden storage compartment   | S                |
| Dexter E-Z Lube® axles   | P                | Pewter hardware and lighting package   | S                | 20" digital bedroom TV with DVD, built-in cabinet and cable/satellite hook-ups   | O                |
| Heavy duty 8-lug wheels  | S                | Ceiling fan with light kit   | P                | Deluxe queen (60" x 80") pillowtop innerspring mattress  | O                |
| Brand name 16" steel belted radial tires   | S                | Computer work station with data port and electrical outlet (most models)   | S                | Bedside nightstand shelves   | S                |
| Undermount spare tire and carrier  | V                | High-back desk chair   | O                | Dual reading lights over bed   | P                |
| Deep tint safety glass windows   | P                | Sofa table and end table with pewter lamp  | V                | Spacious cedar lined front wardrobe with 12v light and 110v outlet near the head of the bed  | P                |
| 30" wide entry door  | S                | Electric fireplace   | P                | "Shoe Closet" storage area in front wardrobe   | S                |
| Fold away entry handle   | V                | Recessed halogen lights in ceiling and under cabinets  | P                | Hidden safe under bed  | V                |
| Enormous drop frame pass through storage compartment with flush floor and no stain Congoleum®  | 10 <sup>th</sup> | KITCHEN  |                  | King size bed (72" x 78") with innerspring mattress  | V                |
| Enormous front storage compartment with double doors and hooks for power cord and water hose (over 142 cubic feet of total exterior storage) | 10 <sup>th</sup> | Dupont™ Corian® countertop and sink with oversized bowls and pull-out faucet with sprayer  | 10 <sup>th</sup> | UTILITIES  |                  |
| 110v and 12v outlets with cable/satellite hook-up in pass through storage compartment  | S                | (2) Flush mount Dupont™ Corian® sink covers  | P                | Easy Set Remote Control System: remote control electric rear stabilizer jacks, remote control electric front jacks, remote control A&E™ 12v power awning, remote control hydraulic slide-outs, remote control patio scare light. | 10 <sup>th</sup> |
| Slide topper awning package (double slides)  | O                | Wall mounted pedestal-free table with wall cabinet and (4) dinette chairs  | P                | Hydraulic selector valves  | V                |
| Slide topper awning package (triple slides)  | O                | Free standing dinette chairs with plush upholstery and storage in the seats  | S                | Central Exterior Convenience Center: 12v light, outside shower, No-fuss FreezeGuard™ winterizing kit, black tank flush, enclosed low point drains, city water connection, power tank fill, RG-6 cable/satellite hook-up          | P                |
| Slide topper awning package (quad slides)  | O                | Wide, deep drawers   | S                | 35,000 BTU furnace with automatic ignition and high capacity in-floor ducting  | S                |
| High gloss gel coated fiberglass exterior  | V                | Residential-size overhead cabinets   | S                | 15,000 BTU air conditioner with Quick Cool   | P                |
| Dual pane safety glass windows   | O                | 30" OTR convection microwave   | P                | Wire and frame for 2 <sup>nd</sup> air conditioner with remote sensor in bedroom and digital dual zone thermostat  | V                |
|  |                  | 12 cu. ft. side-by-side four door refrigerator   | P                | Washer/dryer prep  | P                |
|  |                  |  |                  | 12 gal. DSI gas/electric water heater  | P                |
|  |                  |  |                  | 80 amp Xantrex™ XADC converter   | 10 <sup>th</sup> |
|  |                  |  |                  | 50 amp service   | V                |
|  |                  |  |                  | 50 amp detachable marine power cord  | S                |
|  |                  |  |                  | Generator pre-wire   | 10 <sup>th</sup> |
|  |                  |  |                  | Systems monitor panel  | S                |
|  |                  |  |                  | Phone jack/data port   | S                |
|  |                  |  |                  | Satellite/cable hook-up  | V                |
|  |                  |  |                  | Roof mounted satellite system  | O                |
|  |                  |  |                  | Carbon monoxide detector   | S                |
|  |                  |  |                  | Fresh water capacity = 66 gal.   | S                |
|  |                  |  |                  | Grey water capacity = 93 gal.  | 10 <sup>th</sup> |
|  |                  |  |                  | Black water capacity = 50 gal.   | 10 <sup>th</sup> |
|  |                  |  |                  | Ducted 2 <sup>nd</sup> 13,500 BTU A/C  | O                |
|  |                  |  |                  | Wireless rear/back-up camera   | O                |
|  |                  |  |                  | Fantastic vent fan (locations vary)  | O                |
|  |                  |  |                  | Generator ready (Onan 5.5 kw specs.)   | O                |
|  |                  |  |                  | Onan Marquis Gold 5.5 kw LP generator  | O                |
|  |                  |  |                  | Central vacuum   | V                |
|  |                  |  |                  | Whole coach water filtration system  | P                |

**INTERIOR DECORS**

Golden Vista • Aspen Forest • Midnight Mountain

V=Value Package • P=Big Sky Premium Package  
 10<sup>th</sup>= 10<sup>th</sup> Anniversary Package  
 S=Standard • O=Options

• Standards and options subject to change without notice.

## BIG SKY VALUE PACKAGE (V)

- High gloss gel-coated exterior walls and doors
- Electric fireplace
- Hydraulic selector valves
- Wire and frame for ducted 2nd A/C with remote sensor and dual zone thermostat
- Aluminum wheels
- Central vacuum
- King bed
- Sofa table and end table with pewter lamp
- Fantastic vent fan in kitchen
- Central exterior convenience center
- Arctic insulation package tested and approved for zero degree usage
- Vented attic
- Dexter E-Z Lube® axles
- MOR/ryde® suspension
- Deep tint safety glass windows
- 15,000 BTU A/C with quick cool
- Washer/dryer prep
- Ceiling fan with light kit
- Digital TV antenna with booster
- Cedar lined front closet with shoe storage and 12V light
- Deluxe porcelain toilet
- Black tank flush
- Skydome over tub
- Hidden safe
- Range cover
- Raised panel refer front
- Fold away entry handle
- Rear roof ladder
- (2) patio scare lights
- Undermount spare tire and carrier
- (2) flush mount sink covers
- 32" HD LCD TV with pull-out swivel tray
- 19" digital flat screen bedroom TV
- TV connection
- 110V and 12V outlets in basement

## BIG SKY PREMIUM PACKAGE (P)

- "Big Sky" exterior paint and graphics
- "Big Sky" aerodynamic front cap with Hitch Vision™
- Hardwood stiles, cabinet doors, and end panels with hidden hinges and pewter hardware
- "Big Sky" designer slide room fascia
- "Big Sky" crown molding trim at ceiling
- "Big Sky" accent trim on interior window frames
- 12 cu. ft. 4-door refrigerator
- 30" OTR convection microwave
- Whole coach water filtration system
- 12 gallon DSI gas/electric water heater
- Wall mounted pedestal-free dinette table with wall cabinet and 4 dinette chairs
- (2) designer recliners with wood trim
- Air mattress hide-a-bed with wood trim
- Recessed halogen lights in ceiling and under overhead cabinets
- Marbled shower with adjustable pewter shower head and soap holder

## 10TH ANNIVERSARY PACKAGE UPGRADES (10<sup>TH</sup>)

- Enormous pass thru storage compartment with flush floor and no stain Congoleum®
- Double door front storage compartment with hooks for power cord and hose
- Easy set remote control system: remote control electric rear stabilizer jacks and front jacks, remote control A&E™ 12V power awning with aluminum wrap, remote control hydraulic slide-outs and remote control patio scare light
- Corian™ kitchen countertops and sink
- Corian™ desktop
- Corian™ dresser top and night stands
- 80 amp Xantrex XADC converter
- LG DVD/CD player with 5.1 surround sound and HDMI output
- Leaded glass cabinet doors
- Upper and lower hardwood crown molding on kitchen cabinets
- Bathroom door with designer leaded glass and full length mirror
- Blackout day/night shades
- Over stuffed duvet bedspread
- Hidden storage in bedroom dresser
- Built-in washer/dryer closet organizer
- Louvered washer/dryer closet door
- Seamless 1-piece underbelly
- Larger grey and black tank capacities



Aluminum Wrapped A&E™  
12V Power Awning



"Big Sky" Accent Trim on  
Interior Window Frames



Pass-Through Storage



30" Over-The-Range  
Convection Oven/Microwave



Pedestal Free, Wall Mounted  
Dinette Table with Built-In  
Wall Cabinet



Adjustable, Hidden Cabinet  
Hinges



"Big Sky" Designer Leaded  
Glass Cabinet Doors



Dimplex™ "Wide View" 5,100  
BTU Electric Fireplace



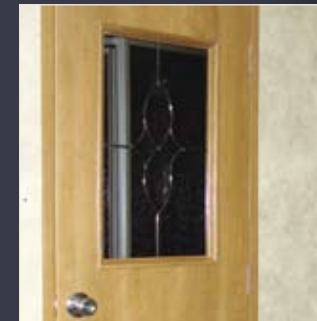
"Big Sky" Crown Molding at  
Ceiling



12 Cubic Foot,  
4 Door Refrigerator



36" Marbled Shower with  
Glass Enclosure



Bathroom Door with "Big  
Sky" Designer Leaded Glass  
and Full Length Mirror

For Big Sky features, photos, floorplans, updates  
and more visit:

[www.keystone-bigsky.com](http://www.keystone-bigsky.com)

Visit the Montana Owners' Club website, independently created and  
maintained by Montana fifth wheel owners, at

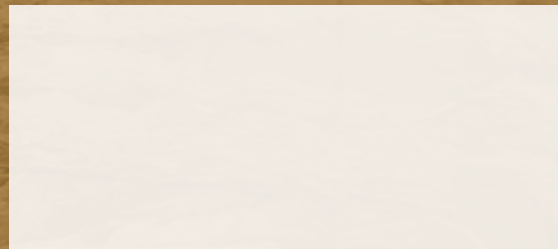
[www.montanaowners.com](http://www.montanaowners.com)

## THE BIG SKY FOR ULTIMATE TOWABILITY

Big Sky's exclusive front fiberglass cap dramatically improves the overall turning radius by 30%, even while towed by short bed trucks! The top to bottom and side to side curvature of the front cap aerodynamically cuts through the air more efficiently, improves the tow vehicle's fuel economy and stabilizes the trailer.



Your Big Sky dealer:



2642 Hackberry Drive  
Goshen, IN 46526  
574-535-2100

Product information is as accurate as possible as of the date of publication of this brochure. Features, floor plans, and specifications are subject to change without notice. Please also consult Keystone's website at [keystonerv.com](http://keystonerv.com) for more current product information and specifications. Tow Vehicle Disclaimer: CAUTION: Owners of Keystone recreational vehicles are solely responsible for the selection and proper use of tow vehicles. All customers should consult with a motor vehicle manufacturer or their dealer concerning the purchase and use of suitable tow vehicles for Keystone products. Keystone disclaims any liability or damages suffered as a result of the selection, operation, use or misuse of a tow vehicle. KEYSTONE'S LIMITED WARRANTY DOES NOT COVER DAMAGE TO THE RECREATIONAL VEHICLE OR THE TOW VEHICLE AS A RESULT OF THE SELECTION, OPERATION, USE OR MISUSE OF THE TOW VEHICLE. 06/08

2008 Keystone RV

K-20-123

Litho USA