

# ROCKWOOD

Windjammer • Signature Ultra Lite Travel Trailers & Fifth Wheels

ROCKWOOD Windjammer • Signature Ultra Lite Travel Trailers & Fifth Wheels





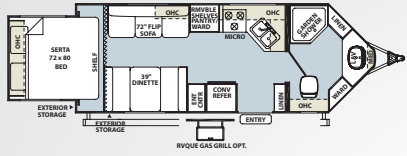


Comfortable Living Room w/ Entertainment Center

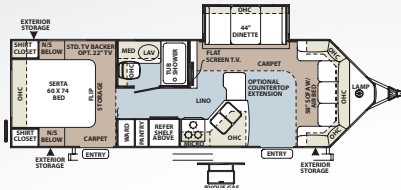


Spacious Bedroom with Bed Slide

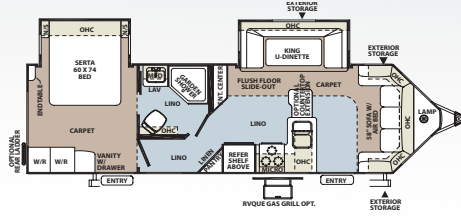
2102W



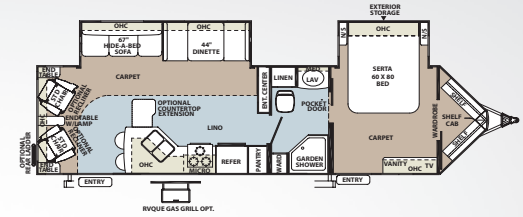
2609W



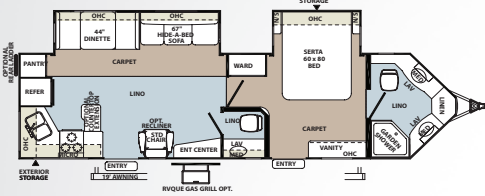
2809W



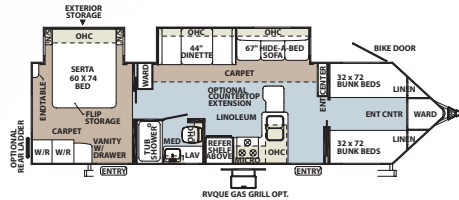
3001W



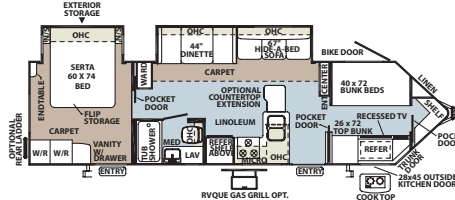
3002W



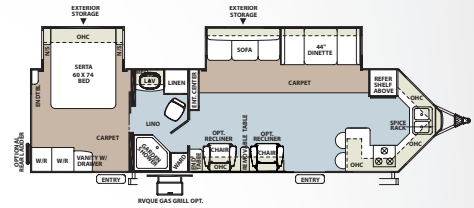
3006W



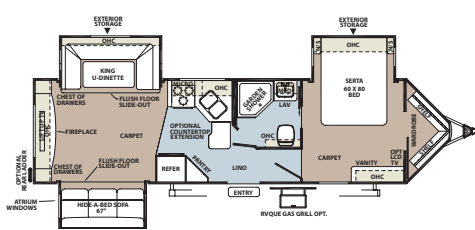
3006WK



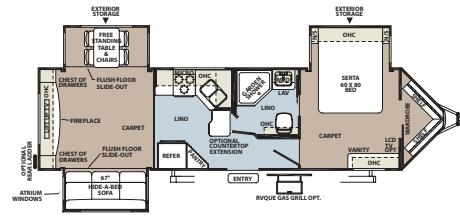
3008W



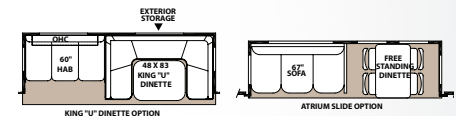
3065W



3065WA



Slide-Out Options



\*\* Slide options available on Signature/Windjammer super slides only



# Rockwood Windjammer

Thanks to its "V" nose design, every possible space is used for interior room and storage.

The aerodynamic, six-sided vacuum-bonded exteriors can be towed by a wide variety of vehicles on the market. A variety of standards and options gives extensive customization potential for each individual consumer.

## Specifications

Model number of any particular unit does not necessarily reflect the overall length of the unit itself. Dry weight are estimates.

MODEL	2102W	2609W	2809W	3001W	3002W	3006W	3006WK	3008W	3065W	3065WA
GVWR (Gross Vehicle Weight Rating)	6550	7150	7850	8550	8550	8550	8550	8650	8650	8650
BASE/DRY UNIT WEIGHT	4991	5674	6247	6801	6975	6728	6948	6950	7132	6998
BASE DRY HITCH WEIGHT	597	624	631	800	814	807	877	894	909	952
BASE DRY AXLE WEIGHT	4394	5050	5616	6001	6161	5921	6071	6056	6223	6046
CARGO CAPACITY	1559	1476	1603	1749	1575	1822	1602	1700	1518	1652
LENGTH	24' 6"	29' 7"	31' 6"	34' 5"	34' 5"	34' 5"	34' 5"	34' 5"	34' 5"	34' 5"
WIDTH	96"	96"	96"	96"	96"	96"	96"	96"	96"	96"
HEIGHT W/O A/C	120"	120"	120"	120"	120"	120"	120"	120"	120"	120"
INTERIOR HEIGHT	78"	78"	78"	78"	78"	78"	78"	78"	78"	78"
FRESH WATER CAPACITY	43 gal	43 gal	43 gal	43 gal	43 gal	43 gal	43 gal	43 gal	43 gal	43 gal
GRAY WATER CAPACITY	38 gal	38 gal	38 gal	38 gal	38 gal	38 gal	38 gal	38 gal	38 gal	38 gal
BLACK WATER CAPACITY	38 gal	38 gal	38 gal	38 gal	38 gal	38 gal	38 gal	38 gal	38 gal	38 gal





# Rockwood Features

Rockwood takes careful consideration to each feature added into each product produced. Every detail is considered ranging from extra sleeping room, storage, comfort and convenience.

Take time to review the features listed below and match them with the competition's products. We're confident you'll discover Rockwood the superior choice.



Residential Style Air Bed Sofa  
*(Std. Most Models)*

Full 60" x 80" queen air mattress on standard sofa *(48" x 80" Double air mattress with King- U-Dinette option.)*

Additional storage under sofa



Extra large dinette storage drawers *(Std.)*

Full extension metal drawer guides in the kitchen *(Std.)*

Free-standing chair with seat storage and table with extension *(Opt.)*

32" LCD TV w/ 5.1 Dolby Speaker System and Satellite Radio *(Most Models)*

# Luxurious Residential Fabrics



Riviera



Austin



Seagrass

Standard Floor  
Covering



Cherry Décor  
Option

Hickory Décor  
Option



Tuscan Décor  
Option

Wood-Look Floor  
Covering Only avail-  
able with Tuscan &  
Combo Décors

Forest River  
Switch Center (Std.)



Day night shades (Std.)



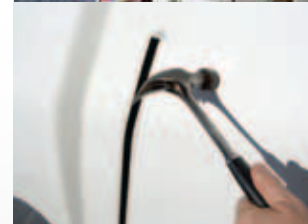
Door side cable  
hook up  
(Std. Selected Models)



Outside Antifreeze  
Inlet with Easy Access  
Water Pump in Storage  
Compartment for  
Convenient Winterizing  
(Std. Signature FW)



TPO front cap  
adds strength and  
durability(Std. Signa-  
ture TT and FW)



Gaming plate (Std.)



Serta residential  
grade mattress  
(CP on Windjammer,  
Signature Ultra Lite)



Heated holding tanks  
with 12 Volt heat pads  
(Std.)



Heated pass through  
storage with separated  
front trunk area  
(Std. Signature FW)



Front window with  
rock guard for  
additional daylight  
(Most TT models)



Rockwood

# Construction

*Rockwood takes pride in constructing the very best products possible in each price point in all models. With the Windjammer and Signature Ultra Lite models, attention is paid to every detail in order to achieve excellence.*

From the all-steel I-beams to the residential interior amenities to the vacuum-bonded exteriors, Rockwood products are quality-built from the ground-up.

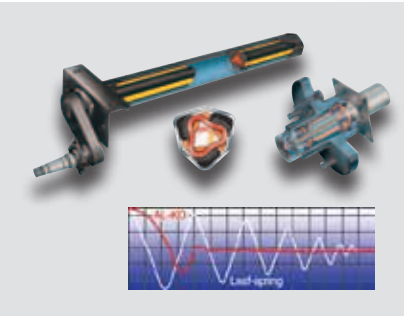
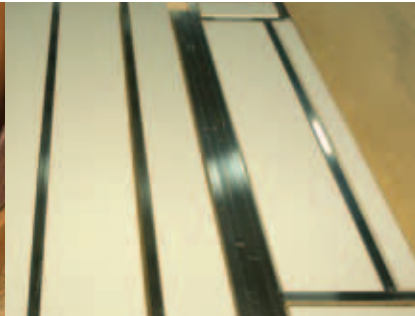
#### ALKO® AXLES AND EASY LUBE HUBS

- Four wheel independent suspension.
- Lower trailer center of gravity for improved stability.
- No metal to metal contact and no springs, shackles, hangers, or U-bolts to break or wear out.

Glued and screwed wood cabinetry

Aluminum dinette frames for added strength and weight savings

Vacuum-bonded floor with 16" on center aluminum floor joists



Storage Doors with Slam Latches  
*(Select Locations)*

All Steel "I" beam frame construction

Enclosed underbelly protects trailer components as well as increasing aerodynamics

High Gloss fiberglass exterior with deluxe graphics



## Wall Strength



Structurally engineered materials makes our vacuum-bonded walls some of the strongest in the industry.

## Vacuum-Bonded Laminated Construction



Rockwood is one of the few light weight manufacturers that is a fully 6 sided vacuum-bonded trailer. Our walls, floors, roof, fronts and backs are all built vacuum-bonded to ensure a light weight strong structural trailer.

## Roof Construction



Vacuum-bonded roof with 2" radius



Radius roof foam with built in insulated A/C ducts



4.5" thick roof foam

Introducing the Rockwood

# Diamond Package





*The upgrade package you've anticipated.*

Always striving to make the best even better, Rockwood has assembled a collection of upscale features and amenities designed to bring distinctive styling and added luxury to the Signature Ultra Lite series of travel trailers and fifth wheels.

Complete details of the Diamond Package contents can be found in the Standards and Options section.



"Tufted" Hide-A Bed Sofa Upgrade



Shielded Awning Covers



Tinted Bonded Frameless Windows



Upgraded Cabinetry Hardware



Solid Surface Counter Tops in the Kitchen and Living Room



Deluxe Interior Window Treatment



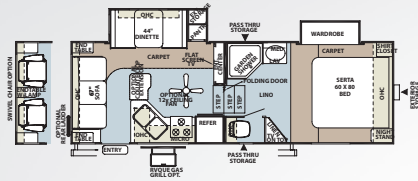
Comfortable Bedroom with Wardrobe Slide.



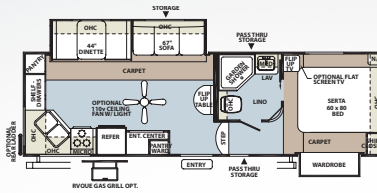
Atrium Slide with Entertainment Center.



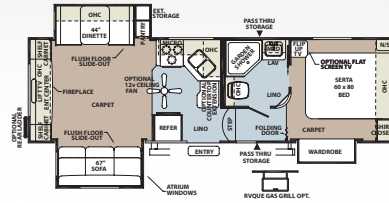
**8244WS**



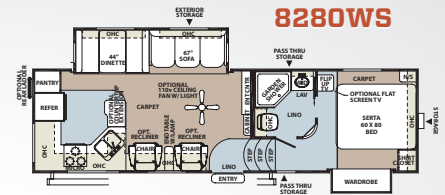
**8260WS**



**8265WS**



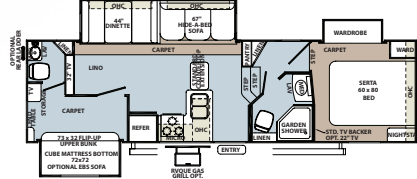
**8280WS**



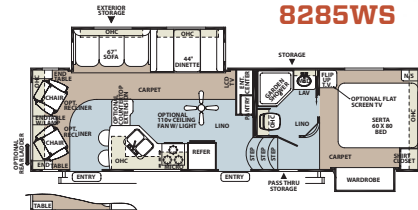
**8281SS**



**8281WS**



**8285WS**

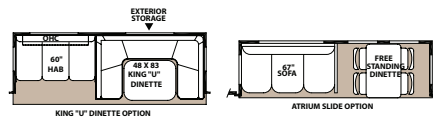


**8286WS**



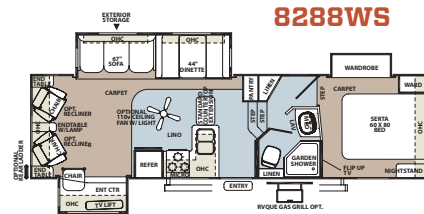
Model 8288WS

**Slide-Out Options**



\*\* Slide options available on Signature/Windjammer super slides only

**8288WS**



**8289WS**



Rockwood Fifth Wheels

**Signature Ultra Lite**

The Rockwood Signature Ultra Lite is the ultimate luxury product in the light weight trailer market.

Offering more floor plans, features and options than any other in its class, we stand proudly showcasing over 18 years of experience in a premium product.

**Specifications**

Model number of any particular unit does not necessarily reflect the overall length of the unit itself. Dry weight are estimates.

MODEL	8244WS	8260WS	8265WS	8280WS	8281SS	8281WS	8285WS	8286WS	8288WS	8289WS
GVWR (Gross Vehicle Weight Rating)	8050	8450	8650	8950	9150	9350	8950	9250	9250	9350
BASE/DRY UNIT WEIGHT	6786	6696	7017	7130	7572	7981	7268	7658	7577	7793
BASE DRY HITCH WEIGHT	1342	1451	1159	1046	1369	1600	1146	1447	1487	1524
BASE DRY AXLE WEIGHT	5444	5245	5858	6084	6203	6381	6122	6211	6090	6269
CARGO CAPACITY	1264	1754	1633	1820	1578	1369	1682	1592	1673	1557
LENGTH	26' 3"	28' 10"	29'	30' 4"	31' 2"	31' 2"	31' 2"	31' 2"	31' 2"	31' 2"
WIDTH	96"	96"	96"	96"	96"	96"	96"	96"	96"	96"
HEIGHT W/O A/C	146"	146"	146"	146"	146"	146"	146"	146"	146"	146"
FRESH WATER CAPACITY	43 gal	43 gal	43 gal	43 gal	43 gal	43 gal	43 gal	43 gal	43 gal	43 gal
GRAY WATER CAPACITY	38 gal	76 gal	38 gal	76 gal	76 gal	76 gal	76 gal	76 gal	76 gal	76 gal
BLACK WATER CAPACITY	38 gal	38 gal	38 gal	38 gal	76 gal	76 gal	38 gal	38 gal	38 gal	38 gal



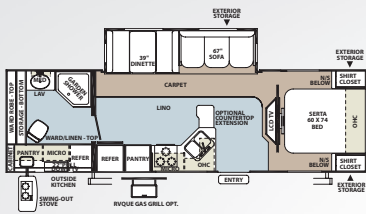
Fully equipped outside kitchen



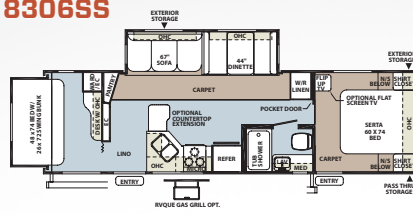
Spacious rear bathroom



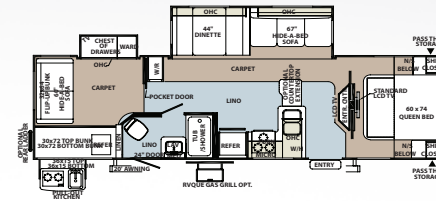
**8293RKSS**



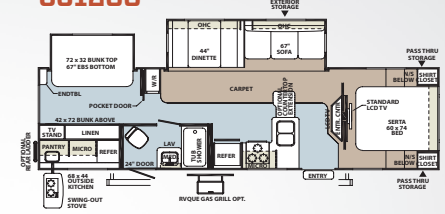
**8306SS**



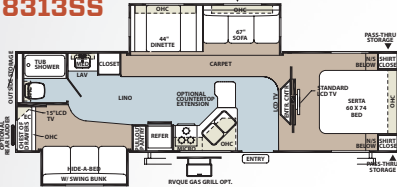
**8311SS**



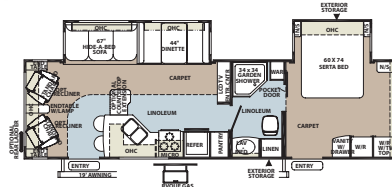
**8312SS**



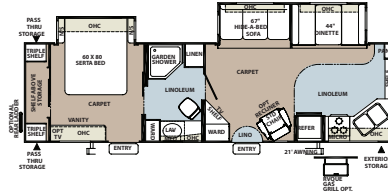
**8313SS**



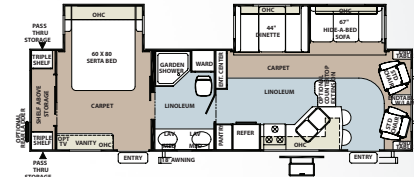
**8314BSS**



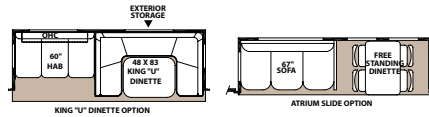
**8315BSS**



**8319SS**



**Slide-Out Options**



\*\* Slide options available on Signature/Windjammer super slides only

Rockwood Travel Trailers

# Signature Ultra Lite

The Rockwood Signature Ultra Lite is the ultimate luxury product in the light weight trailer market.

Offering more floor plans, features and options than any other in its class, we stand proudly showcasing over 18 years of experience in a premium product.

Specifications

Model number of any particular unit does not necessarily reflect the overall length of the unit itself. Dry weight are estimates.

MODEL	8293RKSS	8306SS	8311SS	8312SS	8313SS	8314BSS	8315BSS	8319SS
GVWR (Gross Vehicle Weight Rating)	7950	8400	8450	8650	8450	8450	8450	8650
BASE/DRY UNIT WEIGHT	6501	6533	6951	6974	6732	6724	6976	6831
BASE DRY HITCH WEIGHT	684	861	786	884	771	815	841	742
BASE DRY AXLE WEIGHT	5817	5672	6165	6090	5961	5909	6135	6089
CARGO CAPACITY	1449	1867	1499	1676	1718	1726	1474	1819
LENGTH	32' 4"	33' 3"	34' 9"	34' 3"	34' 3"	34' 3"	34' 3"	34' 3"
WIDTH	96"	96"	96"	96"	96"	96"	96"	96"
HEIGHT W/O A/C	120"	120"	120"	120"	120"	120"	120"	120"
INTERIOR HEIGHT	78"	78"	78"	78"	78"	78"	78"	78"
FRESH WATER CAPACITY	43 gal	43 gal	43 gal	43 gal	43 gal	43 gal	43 gal	43 gal
GRAY WATER CAPACITY	38 gal	38 gal	38 gal	38 gal	76 gal	76 gal	76 gal	38 gal
BLACK WATER CAPACITY	38 gal	38 gal	38 gal	38 gal	38 gal	38 gal	38 gal	38 gal

# Rockwood Windjammer & Signature Ultra Lite Standards & Options

Models	W	SUL/TT	SUL/FW	Models	W	SUL/TT	SUL/FW	Models	W	SUL/TT	SUL/FW
<b>INTERIOR FEATURES</b>											
· Tuscan, Cherry, Hickory and Combo Interior	0	0	0	· MP3 Player Hook-Up	S	S	S	· Three Burner High Output Gas Range	S	S	S
· Decorative Wood Slide Out Fascia	S	S	S	· Satellite Radio	S	S	S	· Upgraded 22" Gas Oven	CPD	S	S
· Upgraded Decorative Wood Slide Out Fascia	--	DP	DP	· 22" LCD TV Mounted in Bedroom (Std. SUL/TT: Only on TT Models w/ Center Entertainment Floor Plans)	--	S*	--	· Microwave	CPD	CPE	CPF
· Solid Wood and Raised Panel Doors and Drawers	S	S	S	· LCD Bedroom TV	0	0	0	· Solid Surface Counter Tops in Kitchen/Living Room	--	DP	DP
· Screwed and Glued Cabinetry	S	S	S	· Drop Down 22" LCD TV in O/S Kitchen (SUL/TT: 8293RKSS SUL/FW: F8286WS Only)	--	S*	S*	· Flush Mount Stone Cast Sinks with Lift-Off Kitchen Faucets	S	S	S
· Residential Full Extension Metal Drawer Guides in Kitchen	S	S	S	· Jack Knife Sofa (Std. F8244WS, Opt. SUL/FW: F8281SS, F8281WS)	--	--	S*/O*	· Residential One-Piece Sink Cover/ Cutting Board	S	S	S
· Upgraded Cabinetry Hardware	--	DP	DP	· Air Hide-A-Bed Sofa w/ Storage (N/A w/ W: 2102W, SUL/FW: F8244WS, Opt. 2nd SUL/TT: 8312SS)	S*	S/O*	S*	· Water-Pur Filtration System	SO	SO	SO
· Flooring: Carpet and an Engineered Mold and Mildew Resistant Floor Covering	S	S	S	· Upgraded "Tufted" Air Hide-A-Bed Sofa w/ Storage (N/A w/ SUL/FW: F8244WS, Opt. 2nd SUL/TT: 8312SS)	--	DP	DP*	· Counter Top Extension (N/A w/ W: 2102W, 3008W SUL/TT: 8315BSS SUL/FW: F8260WS)	0*	0*	0*
· Minimum Carpet available	0	0	0	· Swivel Chair(s) (Opt. SUL/FW: F8244WS)	S*	S/O*	S*	· Trash Can in Kitchen (Most Models)	S	S	S
· Floor Ducted Furnace	S	S	S	· Lazy Boy Leather Recliner Option: Available ILO All Units with Barrel Chairs (N/A SUL/TT: 8319SS)	0	0*	0	· Tub Surround	S	S	S
· 13,500 BTU Ducted Roof Air	CPD	CPE	CPF	· End Table with Attached Lamp (Where available)	S	S	S	· Bathroom Skylight	S	S	S
· 15,000 BTU Ducted Roof Air	0	0	0	· Designer Valances w/ Lambrequin Arms	S	S	S	· Six Gallon "Quick Recovery" 110 DSI Gas/Electric Water Heater	CPD	S	S
· Fireplace (SUL/FW: F8288WS Only)	--	--	0*	· Day/Night Shades	S	S	S	· Water Heater By-Pass Kit	S	S	S
· Ceiling Fan	--	--	0	· Deluxe Interior Window Treatment	--	DP	DP	· Residential Style Porcelain Bowl Foot Flush Toilet	S	S	S
· Carbon Monoxide Detector	SO	SO	SO	· Aluminum Bed and Dinette Frames	S	S	S	· Create-a-Breeze Three Speed Fantastic Vent	SO	SO	SO
· 12 Volt Power Plug Hook-up	S	S	S	· 44" Family Style Dinette (N/A w/ W: 2809W, 3065W)	S*	S	S	· Extra Create-a-Breeze fan	0	0	0
· CSA	0	0	0	· 48" X 84" Spacious King-U-Style Dinette (Std. W: 2809W, 3065W) (N/A w/ W: 2102W, 2609W SUL/FW: F8244S, F8265WS, F8288WS)	S*/O*	0	0*	· Residential Serta Mattress Upgrade	CPD	CPE	CPF
· Monitor Panel	S	S	S	· Free Standing High Pressure Laminated Table with Swing Level Leg	S	S	S	· Heated Mattress	0	0	0
· Battery Disconnect Switch	S	S	S	· Free Standing Table and Chairs (NA w/ W: 2102W)	0*	0	0	<b>EXTERIOR FEATURES</b>			
· 55 Amp Converter With Charger	S	S	S	· Stainless Steel Appliances	0	0	0	· Fully Laminated Aluminum Frame (Floor, Sidewall, & Roof)	S	S	S
· Interior Floor Light by Entrance Door	S	S	S	· Raised Refrigerator Panels	0	0	0	· Insulation Factors R-7 Side Wall, R-12 Floor and R-14 Roof	S	S	S
· Directional Reading Lights on Sofa Slides	S	S	S	· Auto Gas/Electric Refrigerator	S	S	S	· Radius Roof	S	S	S
· Residential Dome Style Lights Over Sofa and Table	S	S	S					· Vinyl / Rubber Composite Roofing Membrane	S	S	S
· Upgraded Recessed Lighting Around Medicine Cabinet	S	S	S					· TV Antenna w/ Cable & Satellite Hook-Up	S	S	S
· LCD TV With 5.1 Digital Dolby Surround Sound Speaker System	S	S	S					· Rear Ladder (N/A w/ W: 2102W SUL/TT: 8306SS)	0*	0*	0
· Digital AM/FM/DVD w/ Remote	S	S	S								

W = WINDJAMMER

SUL/TT = SIGNATURE ULTRA LITE TRAVEL TRAILER

SUL/FW = SIGNATURE ULTRA LITE FIFTH WHEEL

S = STANDARD

SO = STANDARD OPTION

O = OPTIONAL

-- NOT AVAILABLE

\* = SELECTED MODELS

CP = CONVENIENCE PACKAGE

DP = DIAMOND PACKAGE





Models	W	SUL/TT	SUL/FW
· Laminated Fiberglass Sidewalls w/ Lamilux HG 4000 with High Gloss Finish	CPD	CPE	CPF
· Laminated Taupe Color Fiberglass Sidewalls: Lamilux HG 4000 w/ High Gloss Finish and Color Keyed Roof	--	DP	DP
· Deluxe TPO High Gloss Front Cap	S	CPE	S
· Electric Slide-Out	S	S	S
· Decorative Frame Skirting	S	S	S
· Power Awning With Adjustable Rain Dump	CPD	CPE	CPF
· Power Awning With Adjustable Rain Dump and Shielded Awning Covers	--	DP	DP
· Awning Slide Topper	0	0	0
· 30" Entrance Door (Most Models)	S	S	S
· Lighted Entry Step	S	S	S
· Large Grab Handles	S	S	S
· Windows w/ Tinted Safety Glass	CPD	CPE	CPF
· Tinted Bonded Frameless Windows	--	DP	DP
· Thermo Pane Window Upgrade	0	0	0
· Atrium Slide Windows (Super Slides)	S*/0*	0	S*/0*
· Outside Gas Grill and Worktable	0	0	0
· Outside Grill Prep w/ LP Hookup and Backer	S	S	S
· Outside Speakers	CPD	CPE	CPF
· Outside Shower	S	S	S
· Front Outside Storage Separated From Pass Thru Storage	--	--	S
· Outside Antifreeze Station for Convenient Winterizing	S	S	S
· Slam Latches on Most Exterior Storage Doors	--	DP	DP
· Slam Latch on Both Side Pass Thru Storage Doors & Front Compartment Door	--	--	S
· Slam Latch on Pass Thru Storage Doors (SUL/TT: Models w/ Front Bedrooms Only)	--	S*	--
· Two 30 lb Gas Bottles	S	S	S
· Molded Bottle Cover	S	S	S
· Surface Coated Steel I-Beam Frame	S	S	S

Models	W	SUL/TT	SUL/FW
· Reese Revolution Hitch	--	--	S
· Power Front Jack	0	0	S
· Stabilizer Jacks	S	S	S
· Power Stabilizer Jacks	0	0	CPF
· Torsion Axle, Rubber-Ryde Suspension	S	S	S
· Easy Lube Axles	S	S	S
· 15" Tires With Triple Step	S	S	S
· Aluminum Wheels	CPD	CPE	CPF
· Spare Tire Carrier & Cover	CPD	CPE	CPF
· Enclosed Holding Tanks	S	S	S
· Electronically Controlled Heated Holding Tanks	S	S	S
· Black Water Flush	S	S	S
<b>CONVENIENCE PACKAGE D INCLUDES:</b>	0	--	--
· 13,500 BTU Ducted Air			
· Upgraded 22" Gas Oven			
· Microwave			
· 110 DSI Gas/Electric Six Gallon "Quick Recovery"			
· Water Heater			
· Residential Serta Mattress Upgrade			
· Lamilux HG 4000 with High Gloss Finish			
· Power Awning With Adjustable Rain Dump			
· Windows w/ Tinted Safety Glass			
· Outside Speakers			
· Aluminum Wheels			
· Spare Tire Carrier & Cover			
<b>CONVENIENCE PACKAGE E INCLUDES:</b>	--	0	--
· 13,500 BTU Ducted Air			
· Microwave			
· Residential Serta Mattress Upgrade			
· Lamilux HG 4000 with High Gloss Finish			
· Power Awning With Adjustable Rain Dump			

Models	W	SUL/TT	SUL/FW
· Windows w/ Tinted Safety Glass			
· Outside Speakers			
· Aluminum Wheels			
· Spare Tire Carrier & Cover			
· Deluxe TPO High Gloss Front Cap			
<b>CONVENIENCE PACKAGE F INCLUDES:</b>	--	--	0
· 13,500 BTU Ducted Air			
· Microwave			
· Residential Serta Mattress Upgrade			
· Lamilux HG 4000 with High Gloss Finish			
· Power Awning With Adjustable Rain Dump			
· Windows w/ Tinted Safety Glass			
· Outside Speakers			
· Aluminum Wheels			
· Spare Tire Carrier & Cover			
· Power Stabilizer Jacks			
<b>DIAMOND PACKAGE INCLUDES:</b>	--	0	0
· Decorative Solid Wood Slide Out Fascia			
· Upgraded Cabinetry Hardware			
· Upgraded Air Hide-A-Bed "Tufted" Sofa w/ Storage (N/A w/: SUL/FW: F8244WS)			
· Deluxe Interior Window Treatment			
· Solid Surface Counter Tops in Kitchen/Living Room			
· Laminated Taupe Color Fiberglass Sidewalls: Lamilux HG 4000 w/ High Gloss Finish and Color Keyed Roof			
· Shielded Awning Covers			
· Tinted Bonded Frameless Windows			
· Slam Latches on Most Exterior Storage Doors			



### PRE-DELIVERY INSPECTION FACILITY

20,000 square feet of quality assurance. The bare essentials for a premium product. This state-of-the-art facility gives immediate daily feedback to production for quality assurance in every unit built.



**Forest River, Inc. encourages our customers to purchase their Forest River products from a local dealership whenever possible for the following reasons:**

It is the goal of Forest River, Inc. that all of our RV owners fully enjoy the RV experience and that customer satisfaction meets or exceeds their expectations!

- 1) Forest River, Inc. dealers are independently owned and operated businesses so priority service and scheduling is at their discretion and is often provided to customers that purchased their unit at that dealership.
- 2) Purchasing locally allows customers to establish meaningful relationships with a dealer, enhancing the RV experience through assistance with product questions, user tips or RV regulations for your state or country, and much more!
- 3) Canadian customers must meet requirements to bring an RV purchased out of the country to their home. These requirements may involve additional inspections and certifications, taxes and fees. Your local Canadian Dealer is a professional at meeting these requirements.
- 4) Scheduling timely warranty repairs and adjustments through a local dealership provides far greater flexibility and convenience to you, the customer!

### YOUR ROCKWOOD DEALER



Rockwood

# Warranty

For details on Rockwood's complete warranty program, see your Rockwood dealer. When it comes to backing products with the same quality and commitment it has when it begins the manufacturing process, the only name you have to remember when you're looking for a recreational vehicle is Rockwood. Rockwood offers the following additional limited warranties to the original purchasers. Consult written warranty for details.

1. Twelve-year vinyl roof warranty,
2. Two-year fiberglass warranty,
3. Five-year axle warranty,
4. One-year bumper to bumper,
5. Available second-year warranty.



**Learn More**  
Scan this barcode using a QR Reader on your smart phone to learn more about Forest River.



A Berkshire Hathaway company.

201 West Elm Millersburg, IN 46543 [www.forestriverinc.com/rockwood](http://www.forestriverinc.com/rockwood) 574.642.2640

All specifications contained herein are based on the latest product information at time of printing. Forest River reserves the right to make changes in colors, materials, equipment and specifications at any time without notice and assumes no responsibility for any errors in this brochure. Litho. U.S.A. FOR 0906