

YOUR ADVENTURE AWAITS

FREEDOM EXPRESS

ULTRA LITE • LIBERTY • MAPLE LEAF • SELECT




Coachmen[®]
Recreational Vehicles
A division of Forest River, Inc.

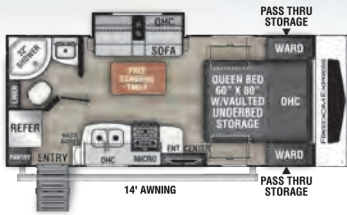
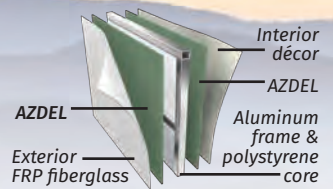
[#FreedomToExplore](#)

FREEDOM EXPRESS

Freedom Express Ultra Lite Travel Trailers are loaded with industry leading features in an affordable, value-packed RV, designed to be towed by today's midsize SUVs and half-ton vehicles. You're sure to find a floorplan that suits your style, whether you are going it alone, or taking the whole family.



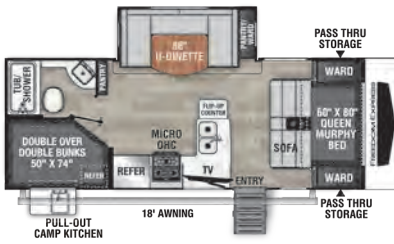
Azdel Onboard RV composite panels create a durable, lightweight, water and temperature resistant, odorless and environmentally friendly wall that will increase the life of your RV.



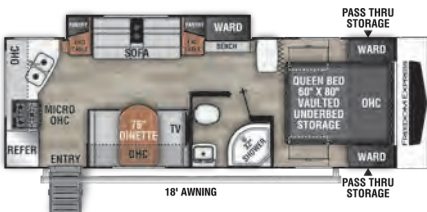
192 RBS / Exterior Length 22' 5"



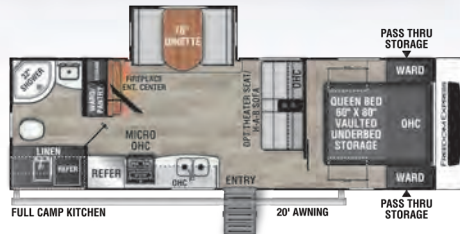
COMING SOON
226 RBS / Exterior Length 22' 5"



238 BHS / Exterior Length 25' 9"



246 RKS / Exterior Length 28' 2"



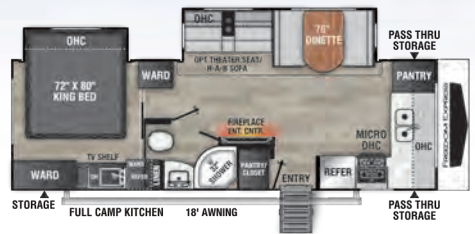
252 RBS / Exterior Length 29' 7"



257 BHS / Exterior Length 28' 6"



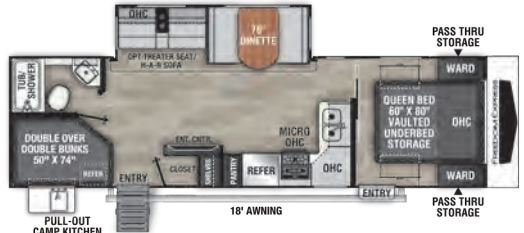
An 81" interior height throughout results in taller slide rooms and 14" overhead kitchen cabinet storage space.



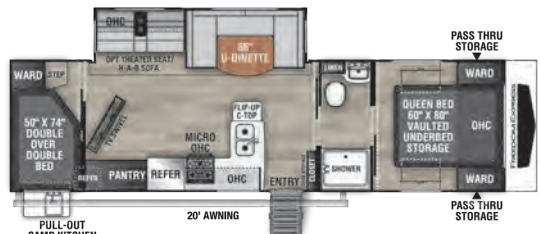
259 FKDS / Exterior Length 29' 10"



274 RKS / Exterior Length 31' 10"



287 BHDS / Exterior Length 32' 10"



294 BHDS / Exterior Length 33' 10"

FREEDOM EXPRESS	192 RBS	226 RBS	238 BHS	246 RKS	252 RBS	257 BHS	259 FKDS	274 RKS	287 BHDS	294 BHDS
UVW (lbs.)	4,418	TBD	5,314	5,300	5,822	5,760	6,494	TBD	6,562	6,784
Hitch Weight (lbs.)	490	TBD	694	638	672	664	752	TBD	864	936
Carrying Capacity (lbs.)	1,582	TBD	2,286	2,100	1,778	1,840	2,506	TBD	1,038	2,048
Ext. Length (Incl. Bumper to Hitch)	22' 5"	22' 5"	25' 9"	28' 2"	29' 7"	28' 6"	29' 10"	31' 10"	32' 10"	33' 10"
Ext. Height (Incl. A/C)	10' 7"	TBD	11' 1"	11' 0"	11' 1"	11' 1"	11' 3"	TBD	11' 1"	11' 3"
Int. Height (Coach)	81"	81"	81"	81"	81"	81"	81"	81"	81"	81"
Awning Length	14'	TBD	18'	18'	20'	20'	18'	20'	18'	20'
Water Cap. (gal.)	50/35/35	TBD	50/35/35	50/35/35	50/35/35	50/35/35	50/70/35	TBD	50/70/35	50/70/35
Tire Size	ST205/75R14D	TBD	ST205/75R14D	ST205/75R14D	ST205/75R14D	ST205/75R14D	ST225/75R15E	TBD	ST205/75R14D	ST225/75R15E

GVWR (Gross Vehicle Weight Rating) - is the maximum permissible weight of the unit when fully loaded. It includes all weights, inclusive of all fluids, occupants, cargo, optional equipment and accessories. For safety and product performance do NOT exceed the GVWR.

GCWR (Gross Combined Weight Rating) - is the maximum permissible loaded weight of your motor home and any towed trailer or towed vehicle. Actual GCWR of this vehicle may be limited by the sum of the GVWR and the installed hitch receiver maximum capacity rating; see hitch rating label for detail.

GAWR (Gross Axle Weight Rating) - is the maximum permissible weight, including cargo, fluids, optional equipment and accessories that can be safely supported by each axle.

UVW (Unloaded Vehicle Weight) - is the typical weight of the unit as manufactured at the factory. It includes all weight at the unit's axle(s), including full fuel, all fluids and LP Gas. The UVW does not include cargo, fresh potable water, additional optional equipment or dealer installed accessories.

*Estimated Average based on standard build optional equipment.

CCC (Cargo Carrying Capacity)** - is the amount of weight available for fresh potable water, cargo, passengers, additional optional equipment and accessories. CCC is equal to GVWR minus UVW. Available CCC should accommodate fresh potable water (8.3 lbs per gallon). Before filling the fresh water tank, empty the black and gray tanks to provide for more cargo capacity.

**Estimated average based on standard build optional equipment.

Each Forest River RV is weighed at the manufacturing facility prior to shipping. A label identifying the unloaded vehicle weight of the actual unit and the cargo carrying capacity is applied to every Forest River RV prior to leaving our facilities.

The load capacity of your unit is designed by weight, not by volume, so you cannot necessarily use all available space when loading your unit. Actual towing capacity is dependent upon your particular loading and towing circumstances, which includes the GVWR, GAWR and GCWR as well as adequate trailer brakes. Please refer to the Operator's Manual of your vehicle for further towing information.



FREEDOM EXPRESS

VAULTED QUEEN BED

MORE STORAGE THAN EVER BEFORE

EASY LIFT

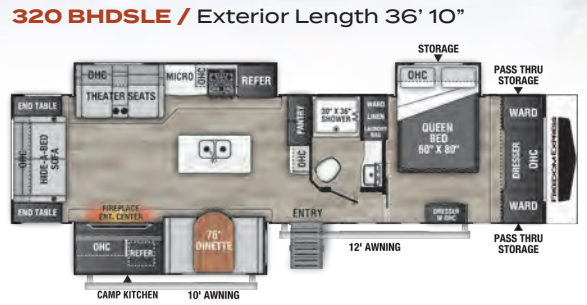
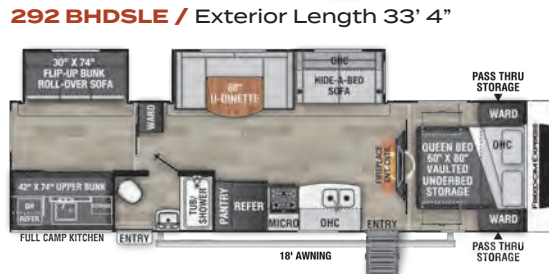
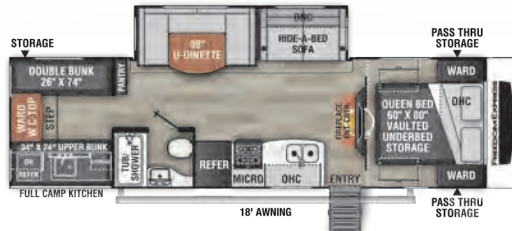


Pack up and go! Easy to lift vaulted queen bed storage includes drawers and under drawer shoe cubbies. (Not available on slide out beds and SE models.)



Quick connect gas griddle, sidewall mount table and 24" x 48" outdoor table included on all Ultra Lite and Liberty/Maple Leaf travel trailers.

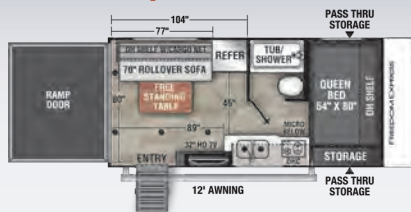
Liberty/Maple Leaf Edition Travel Trailers combine luxury amenities with popular floorplans in an affordable, value-added package designed for easy towing by today's midsize SUVs and half-ton vehicles.



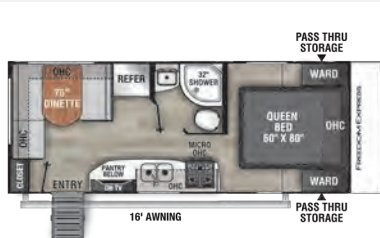
Select Edition

Freedom Express has combined our most popular features and floorplans to create these Select Edition value added models. They come complete with private master bedrooms, seamless kitchen counters, entertainment towers and our signature vacuum bonded Azdel sidewall construction.

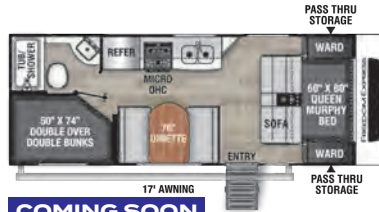
Select Toy Hauler



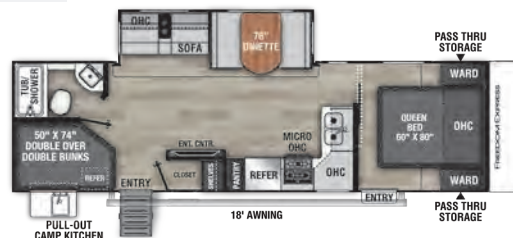
17 BLSE / Exterior Length 20' 3"



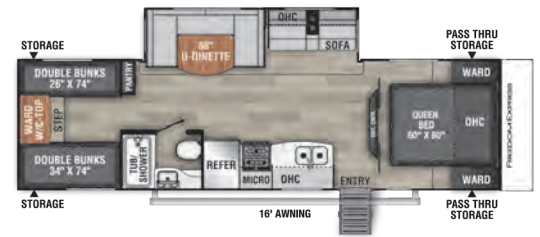
20 SE / Exterior Length 24' 6"



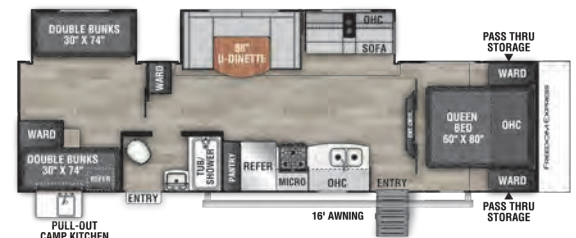
22 SE / Exterior Length 24' 11"



28.7 SE / Exterior Length 32' 10"



29 SE / Exterior Length 33' 4"



31 SE / Exterior Length 35' 6"

LIBERTY/MAPLE LEAF	292 BHDSLE	310 BHDSLE	320 BHDSLE	324 RLDSE	326 BHDSLE	SELECT EDITION	TOY HAULER	17 BLSE	20 SE	22 SE	28.7 SE	29 SE	31 SE
UVW (lbs.)	7,058	7,806	8,228	8,328	8,396	UVW (lbs.)	3,596	4,160	TBD	6,100	6,218	7,172	
Hitch Weight (lbs.)	788	1,126	1,092	1,222	1,156	Hitch Weight (lbs.)	508	512	TBD	720	642	884	
Carrying Capacity (lbs.)	2,442	2,094	2,272	2,172	2,104	Carrying Capacity (lbs.)	2,304	1,840	TBD	1,600	2,782	2,328	
Ext. Length (Incl. Bumper to Hitch)	33' 4"	35' 6"	36' 10"	36' 10"	36' 10"	Ext. Length (Incl. Bumper to Hitch)	20' 3"	24' 6"	24' 11"	32' 10"	33' 4"	35' 6"	
Ext. Height (Incl. A/C)	11' 1"	11' 3"	11' 3"	11' 4"	11' 3"	Ext. Height (Incl. A/C)	10' 8"	10' 7"	TBD	10' 11"	11' 1"	11' 3"	
Int. Height (Coach)	81"	81"	81"	81"	81"	Int. Height (Coach)	81"	81"	81"	81"	81"	81"	
Awning Length	18'	18'	20'	10', 12'	11', 8'	Awning Length	12'	16'	TBD	18'	16'	16'	
Water Capacity (gal.)						Water Capacity (gal.)							
Fresh/Grey/Waste	50/35/35	50/35/35	50/70/35	50/35/35	50/70/70	Fresh/Grey/Waste	50/35/35	50/35/35	TBD	50/70/35	50/35/35	50/35/35	
Tire Size	ST225/75R15E	ST225/75R15E	ST225/75R15E	ST225/75R15E	ST225/75R15E	Tire Size	ST205/75R14D	ST205/75R14D	TBD	ST205/75R14D	ST225/75R15E	ST225/75R15E	

FREEDOM EXPRESS

Freedom Value Package (Mandatory - Ultra Lite, Liberty/Maple Leaf)

- 3/4 Gel Coated Fiberglass Cap with Automotive Glass Windshield
- Alumicage Construction
- Vacuum Bonded Walls with Azdel Composite (Interior and exterior)
- Aluminum Wheels
- Spare Tire
- Detachable Power Cord
- Power Awning with LED Light Strip
- Tinted Safety Glass Windows
- Front Diamond Plate
- E-Z Lube® Axles
- Spread Axle Design (N/A 192)
- Heated/Enclosed Underbelly
- Full Walk-on Roof
- Tufflex PVC Roofing
- Exterior Shower
- Winterize Ready Kit
- Black Tank Flush
- Ducted Furnace and A/C (N/A 192)
- Magnetic Freedom Latch Compartment Door
- Keyed-A-Like
- 24" x 48" Outdoor Table
- AIR 360+ Amplified Omnidirectional VHF/UHF, FM and WiFi Antenna with optional 4G LTE Gateway Add-On
- Exterior TV Hook-up
- Freedom Solar Ready
- Back-up Camera Prep
- Battery Disconnect
- Aluminum Solid Steps
- Pet Leash/Bottle Opener
- Amber LED Entry Light
- 6 Gal. DSI Gas/Electric Water Heater
- 81" Interior Height
- AM/FM/HDMI/USB/Bluetooth Stereo
- Two Exterior/Four Interior Speakers
- LED TV

- LED Interior Lighting
- Night Shades
- Carefree Flooring
- Hidden Hinge Cabinetry
- Kitchen Backsplash
- Dual Basin American Stonecast Sink with Covers
- Microwave
- Oven with 3-Burner Stove and Glass Top
- Double Door Refrigerator
- Utensil Drawer (N/A 326)
- 60" x 80" Queen Mattress with Cover
- USB Ports
- Skylight/Power Vent in Bath
- Porcelain Toilet
- Friction Hinge Entry Door
- 15K BTU Roof Air Conditioner
- Freedom Vaulted Bed Storage (N/A 226, 238, 259, 324)
- RVIA

Ultra Lite Express Pack (Required)

- Power Tongue Jack
- Griddle and Side Table
- 8 Cu. Ft. Refrigerator

Ultra Lite Options

- 50 AMP Service with Second Air Conditioner Prep
- Second 15K BTU Roof Air Conditioner Installed
- Power Stabilizer Jacks (NA 192)
- Hide-A-Bed Sofa (252, 259, 274, 287, 294)
- Theater Seats with Heat, Massage and Lights (252, 259, 274, 287, 294)
- 12V 10 Cu. Ft. Refrigerator
- Murphy Bed (226, 238 required)
- 175 W Solar Panel and 30 Amp MPPT Control Charger
- CSA Canadian Compliance
- MEP Fee (REPLACES RVIA)



Liberty/Maple Leaf Upgraded Package

Liberty/Maple Leaf Editions include the Freedom Value Package, plus these upgrades.

(Liberty/Maple Leaf only)

- Full Fiberglass Front Cap with Automotive Glass Windshield
- Front Rock Guard Graphics
- Liberty/Maple Leaf Upgraded Graphics
- Slam Latch Baggage Doors
- Enclosed/Heated Gate valves
- Security Light
- Power Stabilizer System
- Central Control Panel
- LCI ONEControl® Smart Phone App
- Solid Surface Kitchen Countertop with Sink Covers
- Slotted Knife Storage
- Pull-out Faucet
- Residential Light over Dinette
- Hide-A-Bed Sofa
- Fantastic Fan with Remote
- Roller Shades

Two Slider Pots and Pan Drawer under Dinette

Designer Bedsread with Matching Pillows

Electric Fireplace

Liberty/Maple Leaf Express Pack (Required)

- Frameless Windows
- 50 AMP Service with Second Air Conditioner Prep
- Griddle and Side Table

Liberty/Maple Leaf Options

- Second 15K BTU Roof Air Conditioner Installed
- 12V 10 Cu. Ft. Refrigerator
- Theater Seats with Heat, Massage and Lights (IPO Hide-a-Bed Sofa)
- 175 W Solar Panel and 30 Amp MPPT Control Charger
- CSA Canadian Compliance - Inc. CSA
- MEP Fee (REPLACES RVIA)

Select Edition Package

- Alumicage Construction
- Vacuum Bonded Walls with Azdel Composite (Interior and Exterior)
- Radial Tires with Silver Steel Wheels
- Spare Tire
- Detachable Power Cord
- Power Awning
- Tinted Safety Glass Windows
- Front Diamond Plate
- E-Z Lube® Axles
- Heated/Enclosed Underbelly
- Full Walk-on Roof
- Tufflex PVC Roofing
- Winterize Ready Kit
- Ducted Furnace and Air Conditioner (N/A 17BL, 20SE)
- AIR 360+ Amplified Omnidirectional VHF/UHF, FM and WiFi Antenna with optional 4G LTE Gateway Add-On
- Freedom Solar Ready
- Two Interior/Two Exterior Speakers
- Pet Leash and Bottle Opener
- 81" Interior Height
- AM/FM/HDMI/USB/Bluetooth Stereo
- 6 Gal. DSI Gas/Electric Water Heater
- LED Interior Lighting
- Night Shades
- Congoleum Diamond Flooring

- Hidden Hinge Cabinetry
- Dual Basin American Stonecast Sink
- Microwave
- Oven with 3-Burner Cooktop (N/A 17BL)
- Double Door Refrigerator
- Utensil Drawer (N/A 17BL)
- 60" x 80" Queen Mattress with Cover (17BL - 54" x 80")
- USB Ports
- Bath Skylight
- Friction Hinge Entry Door
- RVIA

Select Edition Options

- Interior Choice - River
- Leisure Package**
- 32" TV
- Power Tongue Jack
- LED Awning Light
- Additional Options**
- 50 AMP Service with Second Air Conditioner Prep
- 15K BTU Roof Air Conditioner
- 12V 10 Cu. Ft. Refrigerator
- 175 W Solar Panel and 30 Amp MPPT Control Charger
- CSA Canadian Compliance - Inc. CSA
- MEP Fee (REPLACES RVIA)



Coachmen®
Recreational Vehicles

A division of Forest River, Inc.

423 N. Main Street • P.O. Box 30 • Middlebury, IN 46540
(800) 353-7383 • www.coachmenrv.com/freedom-express

To learn more about our products, and see how Coachmen is making the easy life easier, contact us today.

**24/7 EMERGENCY
ROADSIDE ASSISTANCE
WITH VEHICLE PURCHASE***

<p>TOWING JUMP-STARTS TIRE CHANGES FLUID DELIVERY LOCKOUT SERVICE</p>	<p>WINCH-OUT MOBILE MECHANIC TECHNICAL SUPPORT DEALER LOCATOR SERVICES</p>
---	--

**SAFERIDER®
MOTOR CLUB**

*VALID FOR 1 YEAR FROM DATE OF PURCHASE

All information contained in this brochure is believed to be accurate at the time of publication. However, during the model year, it may be necessary to make revisions and Forest River, Inc., reserves the right to make all such changes without notice, including prices, colors, materials, equipment and specifications as well as the addition of new models and the discontinuance of models shown in this brochure. Therefore, please consult with your Forest River dealer and confirm the existence of any materials, design or specifications that are material to your purchase decision. ©2021 Freedom Express by Coachmen, a Division of Forest River, Inc., a Berkshire Hathaway company. All Rights Reserved. 11/21



Learn More
Scan this barcode using a QR Reader on your smart phone to learn more about Forest River.



A Berkshire Hathaway company.

WWW.KOACARECAMPS.ORG

Fighting + Making
Cancer + Memories



Find us on
Facebook

YOUR COACHMEN FREEDOM EXPRESS DEALER