

CRUISER

CRUISER

Cruiser Fifth Wheels and Travel Trailers



Cruiser Sahara



Cruiser Travel Trailer

Cruiser Fifth Wheel

Cruiser Patriot/Provincial





# CRUISER



## Cruiser travel trailer

Aerodynamically designed, full color front cap and Secure Stance® axles for easy towing.

pg 2



## Cruiser fifth wheel

Engineered for half ton towing. Impressive package of comfort and convenience.

pg 4



## Cruiser Sahara

Standard full body color with champaign colored sidewalls and cappuccino colored front cap.

pg 8



## Cruiser Patriot & Provincial fifth wheel

Abounding in easy-living features with flush floor bedroom slides.

pg 10







**Model CT29RLX shown with Ocean décor**

The Cruiser travel trailer is designed for lite-weight easy towing by half-ton vehicles, but it's no lite-weight when it comes to interior livability. Check out all the creature comforts of this gorgeous interior. The bountiful living area is furnished with fine furniture, panoramic picture window, elegant etched glass cabinets, and round free standing dinette for family dining. These are just a few of the many outstanding features that make the Cruiser such a great family travel trailer.





**Model CF29BHX shown with Nutmeg décor**

The Cruiser fifth wheel is specially engineered to offer more lite-weight towing options. A rear receiver hitch even allows for triple towing, so you can bring along those extra toys to enhance your fun. When it's time to relax, come inside and kick back on the plush sofa and enjoy the state-of-the-art entertainment center complete with Dolby® digital seven speaker surround sound system. Outstanding value is packaged together with full featured amenities to create the perfect living environment for your lifestyle.





### **Bathroom & Bedroom**

You won't find any compromises in the Cruiser bathroom - only the conveniences of home such as this roomy corner shower with glass door, overhead skylight, and lavatory with mirrored medicine cabinet.

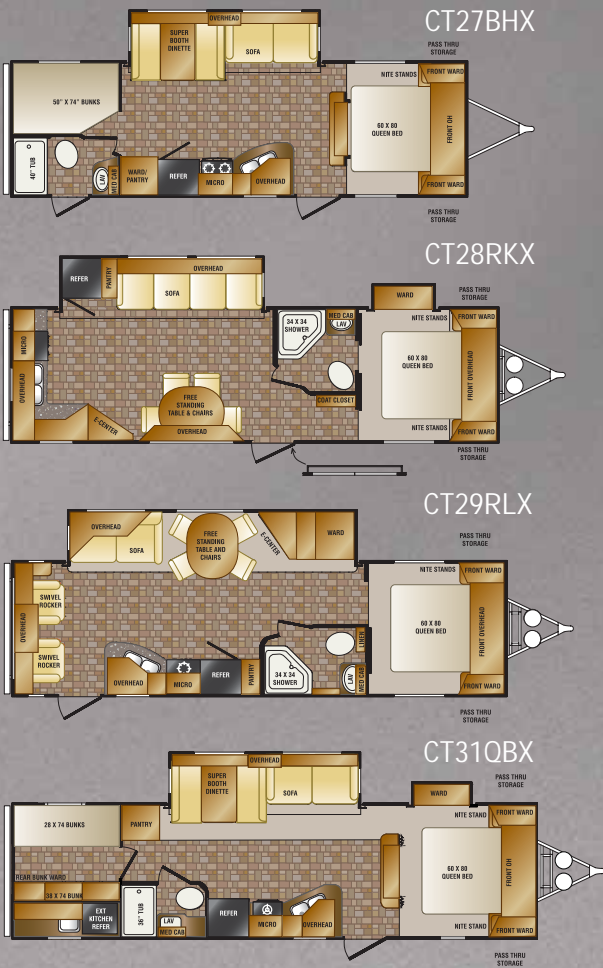
The Cruiser bedroom abounds in personal comfort and storage space. The deluxe queen bed is flanked with overhead reading lights for bedtime relaxation and lifts up to reveal hidden storage underneath.



# CRUISER

## Travel Trailer & Fifth Wheel Floor Plans

### Travel Trailer Floor Plans



CF29BHX Cook-Out kitchen

**NEW** Travel Trailer Floor Plans

CT27RLX COMING SOON      CT30REX COMING SOON

CT28FKX COMING SOON      CT31RBX COMING SOON

Specifications	CT27BHX	CT28RKX	CT29RLX	CT31QBX	CF26RKX	CF26ULX	CF27RLX	CF29BHX
Dry Weight	6517	7073	7041	TBD	6968	6987	7277	7808
Carrying Capacity	4583	3811	3975	TBD	4682	4545	4397	3834
Hitch Weight	940	724	856	TBD	1490	1372	1514	1482
Axle Weight	5577	6349	6185	TBD	5478	5615	5763	6326
Exterior Length	31' 0"	32' 10"	33' 3"	TBD	27' 6"	27' 11"	29' 5"	30' 11"
Exterior Height with A/C	11' 4"	11' 6"	11' 6"	TBD	11' 10"	11' 10"	11' 8"	11' 8"

**Tanks:** Fresh water capacity: 58 gallons • Black water capacity: 40 gallons • Grey/galley capacity: 80 gallons



Cruiser Sahara shown

Multifunctional key FOB operates electric awning, outside lights, slide-outs and more. (optional)



\*R-values based with POLARTEC upgrade insulation package. All R-values are approximated using industry resources and are subject to change without notice.

(Cruiser Travel Trailer & Fifth Wheel)

### CONSTRUCTION STANDARDS

1. One-piece, rolled-edge rubber roof with 12 year warranty
2. 3/8" Plywood roof decking
3. 16" OC Aluminum truss roof rafters and tube floor joists
4. R-27 Fiberglass roof and R-28 floor insulation\*
5. Aluminum radius roof transition wrap
6. Full fiberglass front cap
7. 13,500 BTU ducted A/C • 30,000 BTU floor ducted furnace
8. Aluminum tube 16" OC studs for sidewalls, endwalls and slide rooms
9. Thermo-Foil (PolarTec Upgrade Insulation Package - optional)
10. R-15 Sidewall fiberglass insulation\*
11. 2 Layers of Luan board - staggered for seamless walls
12. Lamilux fiberglass exterior for easy maintenance
13. 8" Steel I-beam frame or 10" Steel I-beam frame (varies by floor plan)
14. 5/8" Lightweight tongue and groove plywood floor decking
15. Residential grade carpet with 1/2" foam carpet pad
16. Linoleum bathroom floor
17. Power front jacks
18. Electric slide system(s) with individual room controls
19. Tires with white spoked rims (aluminum option shown)
20. 5,200 lb Axles
21. Fully enclosed, insulated underbelly with radiant heat

### EXTERIOR STANDARDS

22. Tinted safety glass windows
23. Scare light
24. Extended pin box shown (FW only)
25. Swing-out entry assist handle
26. Roof ladder
27. Extra large capacity cargo storage
28. Patio awning
29. 30" Radius entry door with screen
30. Triple entry step
31. Dual 30 lb LP tanks
32. Slam latch baggage door

EZ lube hubs  
Black tank flush  
Enclosed gate valves





# CRUISER

## Sahara

### Model CF330SS

Elegance is no mirage in the Cruiser Sahara. From its full body color exterior to its cultivated beauty inside, you'll experience a wonderful new reality of RV living. Unique design features create a home-like ambiance that includes a graceful curved stairwell that leads up to the flush floor master bedroom.

The ample interior is furnished throughout with residential inspired furniture along with special touches such as a mood-setting fireplace and state-of-the-art entertainment center.

*(Bedroom shown with Ocean décor)*







**Model CF330SS with Ocean décor and upgrade Leather Package**

This island kitchen is an oasis of convenience any cook will appreciate with plenty of open counter space featuring solid surface countertops and deep beautifully crafted kitchen cabinets for storage. The dining area is located in the flush floor slide-out with a free standing dinette set against the backdrop of the large picture window. Also shown is optional leather furniture, adding a luxurious enhancement to the living area.





**CF325MK shown with Nutmeg décor**

The Patriot and its Canadian cousin, the Provincial, is loaded with standard features that most RVs offer only as options, if at all. Experience RV living at its best with these spacious, elegantly appointed interiors. Fashionable solid surface counter top, inviting hide-a-bed sofa, and Tuscan maple cabinetry, along with many other amenities, create a living area that rivals much costlier units.





CF325MK Kitchen



CF325MK Entertainment center



CF325MK Bathroom



CF325MK Storage closet



CF325MK Bedroom



CF325MK Shown with Nutmeg décor and decorative lighting

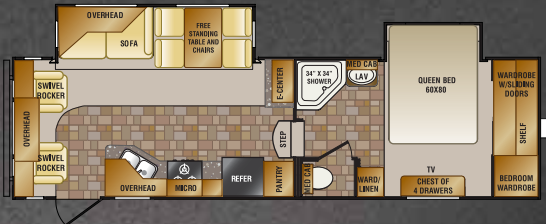


# CRUISER

## Sahara

### Fifth Wheel Floor Plans

CF280RL



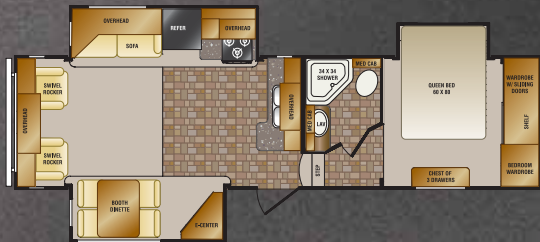
CF310QB

COMING SOON

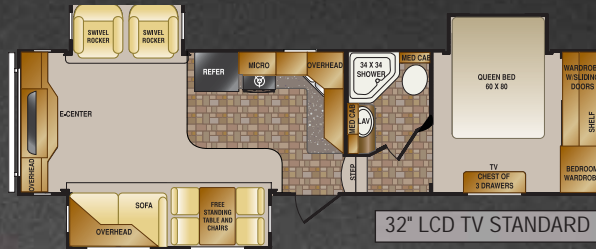
CF320CK



CF300ES



CF310RE

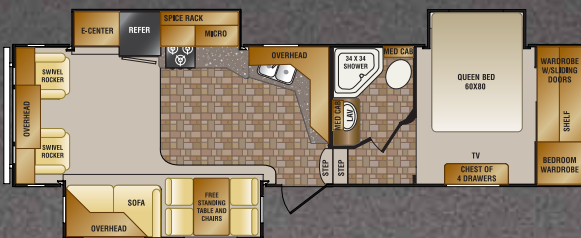


32" LCD TV STANDARD

CF320MK



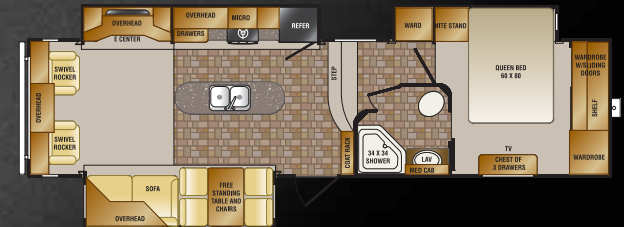
CF300SK



CF320BL

COMING SOON

CF330SS



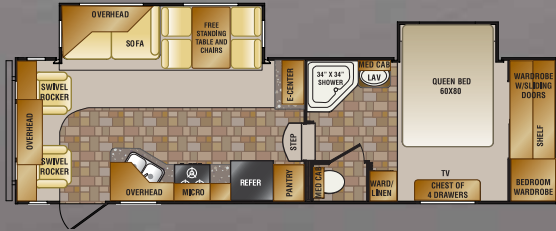
Specifications	CF280RL	CF300ES	CF300SK	CF310QB	CF310RE	CF320BL	CF320CK	CF320MK	CF330SS
----------------	---------	---------	---------	---------	---------	---------	---------	---------	---------

Dry Weight	8424	8998	9082	8607	9030	9277	9534	9252	9761
Carrying Capacity	3796	3384	3216	3686	3100	3020	2828	2980	2581
Hitch Weight	1820	1982	1898	1893	1730	1897	1962	1832	1942
Axle Weight	6604	7016	7184	6714	7300	7380	7572	7420	7819
Exterior Length	30' 11"	32' 2"	32' 10"	34' 11"	32' 11"	34' 11"	33' 11"	33' 11"	33' 11"
Exterior Height with A/C	12' 6"	12' 6"	12' 6"	12' 6"	12' 6"	12' 6"	12' 6"	12' 6"	12' 6"

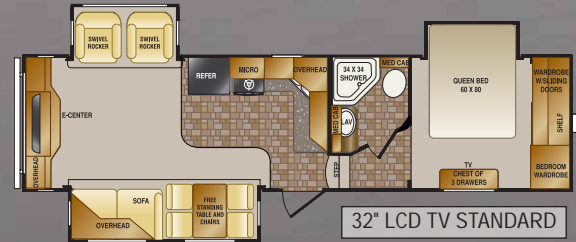


# Cruiser Patriot & Provincial Floor Plans

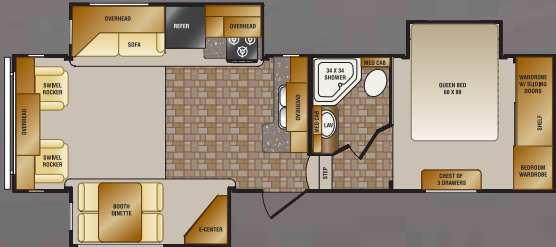
CF285RL



CF315RE



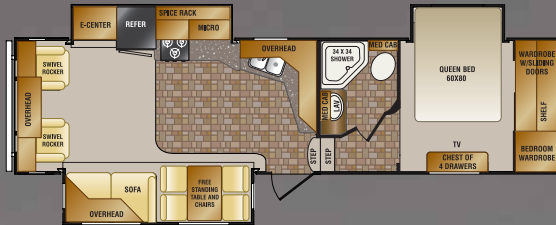
CF305ES



CF325CK



CF305SK

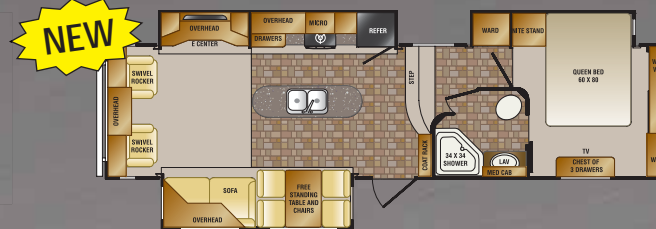


CF325MK



All models feature flush floor bedrooms

CF335SS



## Tank Capacities:

- Fresh water capacity: 58 gallons
- Black water capacity: 40 gallons
- Grey/galley capacity: 80 gallons

CF285RL	CF305ES	CF305SK	CF315RE	CF325CK	CF325MK	CF335SS
8534	9128	9090	9206	9703	9326	9741
3783	3308	3215	3048	2820	3026	2639
1917	2036	1905	1854	2123	1952	1980
6617	7092	7185	7352	7580	7374	7761
30' 11"	32' 10"	32' 10"	32' 11"	33' 11"	33' 11"	33' 11"
12' 6"	12' 6"	12' 6"	12' 6"	12' 6"	12' 6"	12' 6"



Key: O = Option S = Standard N/A = Not Applicable

### Living Room Standards

	Cruiser TT	Cruiser FW	Sahara	Pat/Prov
- Booth dinette with drawer storage underneath	S	S	O	O
- Hide-a-bed sofa with inner spring mattress	O	O	S	S
- Flush floor slide-out with large dinette window	S	S	S	S
- Lighted entertainment center	S	S	S	S
- LCD TV mounting bracket	S	S	S	S
- Satellite/cable hook-up	S	S	S	S
- Solid wood drawer fronts with full extension ball bearing guides	S	S	S	S
- 12 volt Dolby digital surround system (MP3/iPod plug in)	S	S	S	S
- Colored night shades	S	S	S	S
- Swivel rockers (varies by model)	S	S	S	S
- 64" Jackknife style sofa	S	S	N/A	N/A

### Kitchen Standards

- 6 cu ft Double door refrigerator	S	S	N/A	N/A
- 8 cu ft Double door refrigerator	O	O	S	S
- Self-igniting 22" chef range with 3 burners, cover, hood & microwave	S	S	S	S
- Formica self-edge countertop	S	S	N/A	N/A
- Solid wood drawer fronts with full extension ball bearing guides	S	S	S	S
- Wood panel switch key cabinet (varies by model)	S	S	S	S
- Knife rack	S	S	S	S

### Bedroom Standards

- Deluxe innerspring mattress	S	S	S	S
- Full 60x80 queen bed	S	S	S	S
- Lift-up bed with gas struts for extra storage	S	S	S	S
- 2 Night stands	S	S	S	S
- Spacious closets	S	S	S	S
- TV shelf and hook-up	S	S	S	S
- Extra tall chest of drawers (varies by floor plan)	S	S	S	S
- Colored night shades	S	S	S	S

### Bathroom Standards

- Corner shower with glass doors in double and triple slide	S	S	S	S
- Bathroom storage (varies by model)	S	S	S	S
- Laundry chute to cargo storage (varies by model)	S	S	S	S
- Skylight in tub/shower	S	S	S	S
- Water heater bypass and EZ winterize kit	S	S	S	S
- 6 Gallon gas/electric water heater with DSI	S	S	N/A	N/A
- Porcelain foot flush toilet	S	S	S	S
- 40" ABS tub/shower with surround (some models 36")	S	S	N/A	N/A

### Construction Standards

- One-piece, rolled-edge rubber roof with 12yr warranty	S	S	S	S
- 3/8" Plywood roof decking	S	S	S	S
- 16" OC Aluminum truss roof rafters and tube floor joists	S	S	S	S
- Aluminum radius roof transition wrap	S	S	S	S
- Full fiberglass front cap	S	S	S	S
- 30,000 BTU floor ducted furnace	S	S	S	S

### Construction Standards (continued)

- Aluminum tube 16" OC studs for sidewalls, endwalls & slide rooms
- 2 Layers of Luan board - staggered for seamless walls
- Lamilux fiberglass exterior for easy maintenance
- 8" Steel I-beam frame (varies by floor plan)
- 5/8" Lightweight tongue and groove plywood floor decking
- Residential grade carpet with 1/2" foam carpet pad
- Linoleum bathroom floor
- Power front jacks
- Electric slide system(s) with individual room controls
- 5,200 lb Axles
- Fully enclosed, insulated underbelly with radiant heat
- 3/8" Plywood roof decking
- R-27 Fiberglass roof insulation & R-28 floor insulation (with PolarTec)
- Secure Stance axles
- R-15 Sidewall fiberglass insulation (with PolarTec)

### Exterior Standards

- Front colored fiberglass cap
- Tinted safety glass windows
- Scare light
- Extended pin box (Trail-Air™)
- Extra large capacity cargo storage with slam latch
- 30" Radius entry door with screen
- Triple entry step
- Dual 30 lb LP tanks
- EZ lube hubs
- Heated enclosed gate valves
- Water management utility compartment
- Gel coat front cap with enhanced turning radius
- Amber light strip (LED)
- Lighted triple entry step

### Enhancement Package Standards

- Ducted 15,000 BTU A/C
- Ducted 13,000 BTU A/C
- 12 Volt DVD/CD/MP3 Surround sound system
- Tinted Safety glass
- 50 Amp service with A/C Prep
- 16" Aluminum wheels
- Pillowtop Mattress
- Rota Flex pin box
- Electric rear jacks
- PolarTec Insulation
- Upgrade graphics
- Solid surface counter tops in kitchen
- Stainless steel sink
- Electric awning
- Glazed Maple cabinet doors







CROSSROADS



888-226-7496

WWW.CROSSROADSRV.COM



IntelliJacks™

One touch automated connecting and disconnecting system for your fifth wheel.



THOR INDUSTRIES, INC.

Thor Industries' strong financial position and industry leadership are your assurance that we will be here to serve you for years to come.

your local dealer

Colton RV  
North Tonawanda, NY 14120  
(716) 694-0188  
(800) 628-4889  
www.ColtonRV.com

Colton RV  
Orchard Park, NY 14127  
(716) 957-3250  
(800) 628-4889  
www.Coltonrv.com



Coach-Net®

RV Membership Plans