

# Maxum Wild

by Discover Canada RV

*Invitation to the wild*



## Into the Canadian Wild

*MAXUM WILD'S all-aluminum, laminated construction provides unmatched strength and support - providing your family with years of carefree use.*



Shown in  
Canadian Coffee



The interiors of the MAXUM WILD are open and spacious with numerous multiple slideout floorplan arrangements. It's MAXUM WILD models like this one that make it hard for us to convince customers this really is an ultra light weight unit!

Flip around entertainment centers allow you to use one LCD TV for both the living area or the bedroom saving you space and the expense of a second TV.



Shown in  
Canadian Wine

Bedroom Side

Bedroom Side

Shown in  
Canadian Breeze



Whether it's game time, meal time, or bedtime - this flexible dinette is perfect for the kids!

MAXUM WILD ultra lightweight towables are designed with Canadian families in mind! Just take a look at this model with a convenient dinette built right in the bunkhouse area, as well as an entertainment center, large base cabinet storage for clothes and games and more. The dinette makes into a bed for added sleeping space.

Shown in  
Canadian Breeze



Wide open, spacious floorplans are the norm for MAXUM WILD. While large kitchen slide-outs like this are typically reserved for coaches costing thousands more, this MAXUM WILD model provides a truly wide-open feel, as well as large base cabinet and overhead storage, over-sized windows and a sofa and dinette that both convert into beds for additional sleeping capacity.



Shown in Canadian Wine

This bedroom is typical of most MAXUM WILD units, featuring a large queen upgrade mattress, an abundance of overhead cabinets, matching shirt closets, night stands, and two windows for great ventilation.



Shown in Canadian Wine

When it comes to underbed storage - MAXUM WILD has Canadians in mind! Two deep pull-out drawers can be accessed even when someone is on the bed!



Canadian Wine



Canadian Breeze



Canadian Coffee

### LUXURIOUS DECORS

Choose from three elegant decors featuring durable fabrics on the furnishings and window coverings.

MAXUM WILD ultra lightweight towables by Discover Canada RV simply offer more well-thought-out, planned storage opportunities than any other brands in their class! Just look at the incredible amount of storage provided in just the kitchen area of this one Discover Canada RV travel trailer! You will be amazed at what you can take with you when you travel in a MAXUM WILD.



MAXUM WILD is one of the few ultra lightweights to feature full-extension, steel ball-bearing drawer guides for maximum storage space, strength and ease of use. Don't settle for less - choose MAXUM WILD as the best overall value for your money!



MAXUM WILD's combination range top/convection microwave oven is easily operated by a single set of controls. Featuring three high-output burners, and a convection oven that can bake, this great design allows for additional overhead storage opportunities!



### HALF TIME OVEN

Patented Invention by **apollo**<sup>®</sup>  
Cooks Like a Gas or Electric Oven  
in 1/2 the Time!

**CONVECTION**  
Cook bread, fish, potatoes, and vegetables at the same time. A Complete Meal in 20 minutes.

**CONVECTION**  
This model comes with 1000 models of Turbo-powered Convection food.

**1/2 Time Oven**  
Cook at the same temperature as a gas or electric oven but in half the time. Cook faster by using convection heat and microwave energy simultaneously.

**Microwave**  
1000 models of microwave ovens for fast reheating and defrosting.

Use any cookbook... **Apple Pie** Just cut the time in half! **23 min.**

Use directions on any food package... **PIZZA** Just cut the time in half! **17 min.**

**So Easy To Use!**

- Step 1: Preheat the Oven
- Step 2: Set Temperature
- Step 3: Set 1/2 the Time
- Step 4: Push Start

**COMPLETE MEAL: BAKED VEGETABLES, POTATOES** Cooked at the bottom in 20 minutes.

**COOKIES** Bake at 350° for 5 minutes.

**PIZZA** Bake at 400° for 17 minutes.

**BISCUITS** Bake at 375° for 7 minutes.

**PIE - FRISH OR FROZEN** Bake at 400° for 20 minutes.

**PIKE, BEEF, CHICKEN OR TURKEY** Only 10 minutes a piece!

# Maxum Wild

Strength, Durability & Comfort



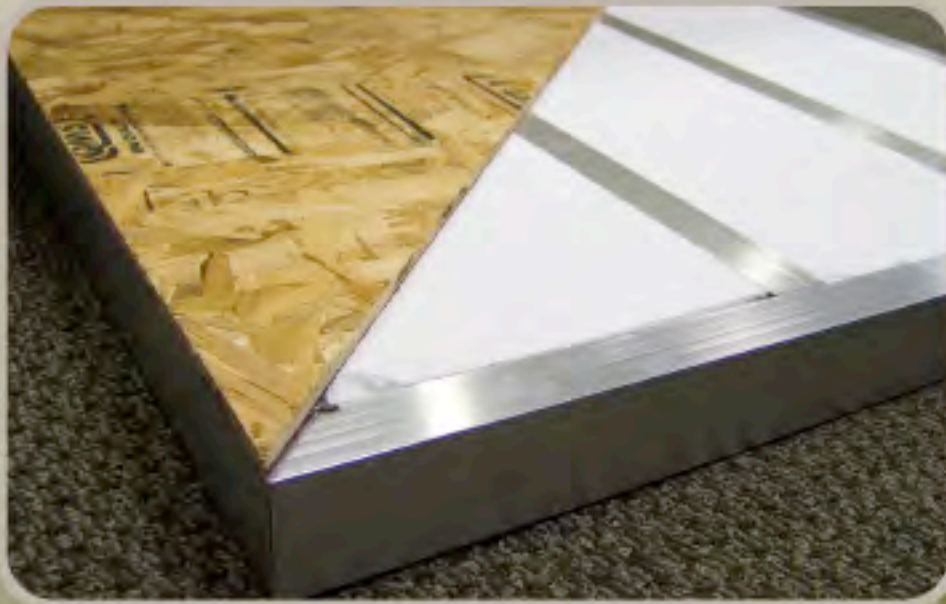
LARGER PASS THROUGH STORAGE allows MAXUM WILD owners to store larger items such as this full-size cooler!



*Incredible towing & balance!*



*(Travel Trailers Only)*



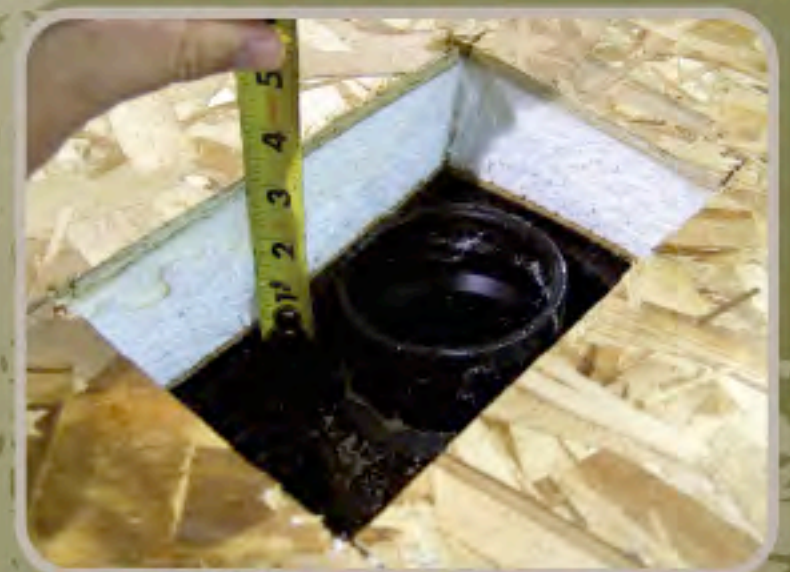
MAXUM WILD's LAMINATED Floor System is one of the STRONGEST FLOORS in the industry! Featuring sturdy 2.5" Aluminum Framing; thick Block Foam Insulation; One-Piece Seamless Decking and a Thermo-Board Luan on the bottom. All of this is Laminated together for Maximum Strength and Insulation R Value - virtually eliminating flex in the floor!

MAXUM WILD's LAMINATED Floor Construction easily supports over 1,800 lbs. of Water Jugs in one spot - resulting in less than 1/4" of flex!!



### 3<sup>rd</sup> LAMINATED FLOOR SYSTEM

Discover Canada RV recreational vehicles have as many residential features and construction methods as possible and we are excited to introduce this in our MAXUM WILD 5th Wheels. Choose Discover Canada RV for *Maximum Strength; Maximum Insulation Value; and Minimal Flex!!*



## Best in Class!

- Insulation + R-Value
- Noise reduction
- Durability
- Strength
- Looks



**Laminated Roof System**



- Rubber Skin
- Wood Decking
- Block Foam Insulation
- Aluminum Ribs & Perimeter
- Decorative, Textured Ceiling Vinyl

**3 INCHES • FIVE LAYERS!**

### SOUND BARRIER

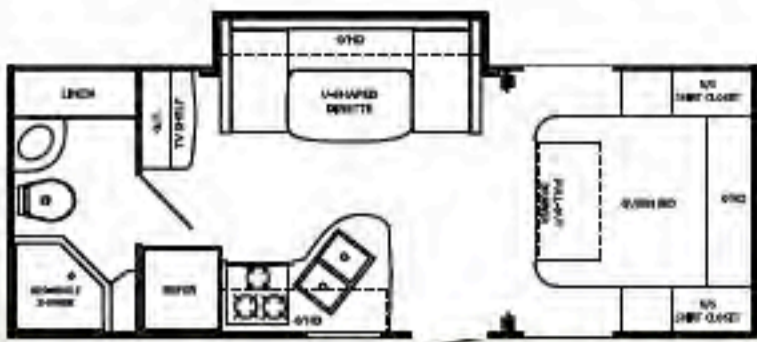


### SUPER STRENGTH



### THERMAL EFFICIENT





GVWR: 6,900 lb. Dry: 4,361 lb.  
Hitch: 390 lb. Length: 26'-4"  
Height: 9'-10"

**21FBS**



GVWR: 6,900 lb. Dry: 4,595 lb.  
Hitch: 374 lb. Length: 26'-10"  
Height: 9'-10"

**22FDS**



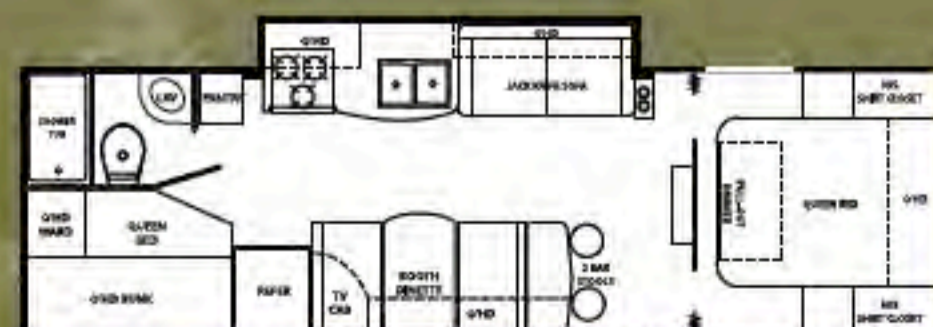
GVWR: 6,900 lb. Dry: 5,154 lb.  
Hitch: 620 lb. Length: 30'-3"  
Height: 9'-10"

**26RKS**



GVWR: 6,900 lb. Dry: 5,290 lb.  
Hitch: 690 lb. Length: 37'-0"  
Height: 9'-10"

**28RLS**



GVWR: 6,900 lb. Dry: 4,900 lb.  
Hitch: 430 lb. Length: 31'-10"  
Height: 9'-10"

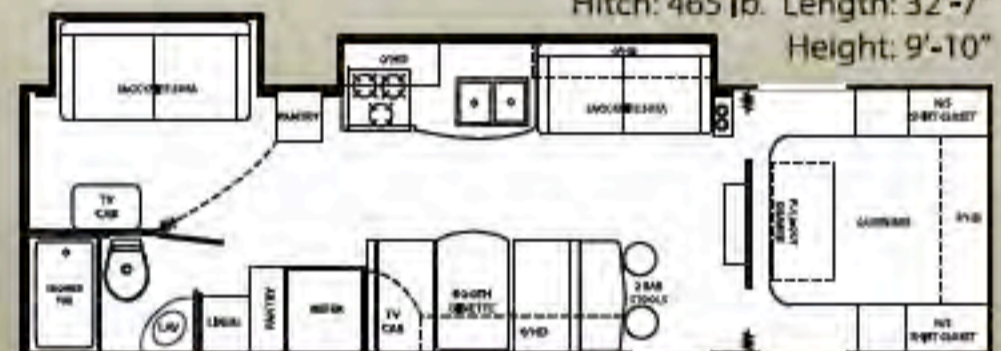
**28BHS**

GVWR: 6,900 lb. Dry: 5,081 lb.  
Hitch: 555 lb. Length: 31'-10"  
Height: 9'-10"

**28OBH**

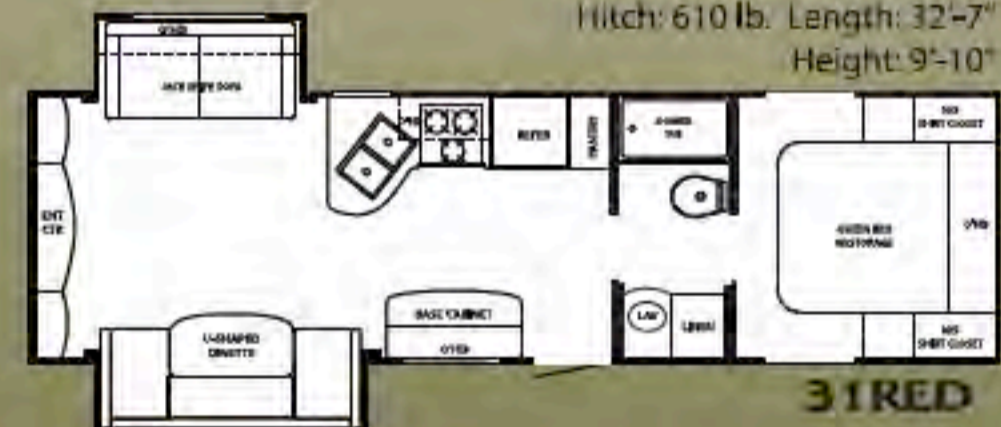


GVWR: 6,900 lb. Dry: 5,277 lb.  
Hitch: 465 lb. Length: 32'-7"  
Height: 9'-10"

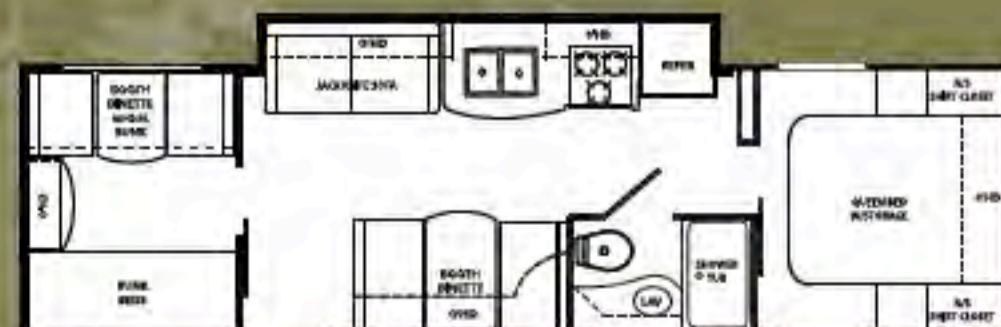


**31BHD**

GVWR: 6,900 lb. Dry: 5,434 lb.  
Hitch: 610 lb. Length: 32'-7"  
Height: 9'-10"



**31RED**



GVWR: 6,900 lb. Dry: 5,429 lb.  
Hitch: 675 lb. Length: 33'-5"  
Height: 9'-10"

**31QBS**



# Maxum Wild

## KING SLIDES



GVWR: 8,600 lb. Dry: 6,612 lb.  
Hitch: 786 lb. Length: 33'-11"  
Height: 10'-10"

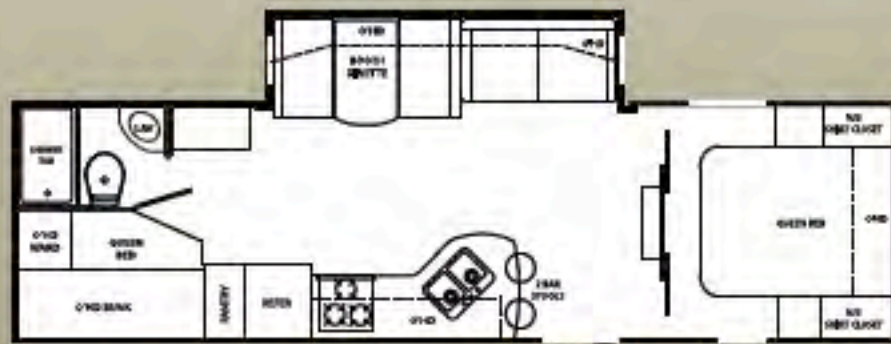


**31RLSS**



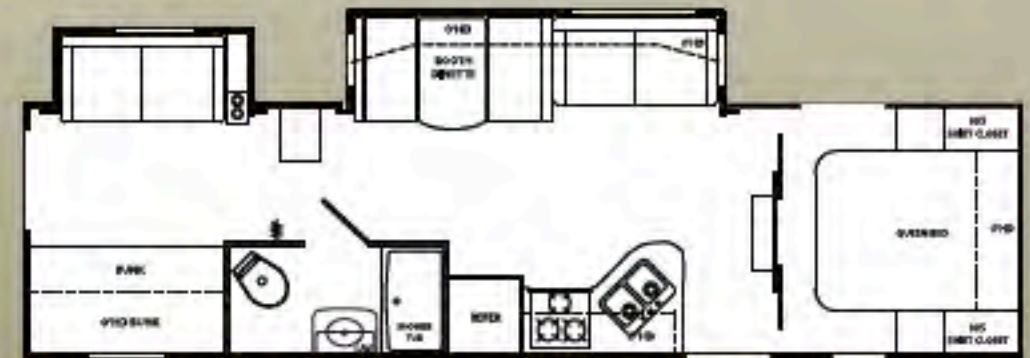
**31BDSS**

GVWR: 8,600 lb. Dry: 6,740 lb.  
Hitch: 780 lb. Length: 34'-11"  
Height: 10'-10"



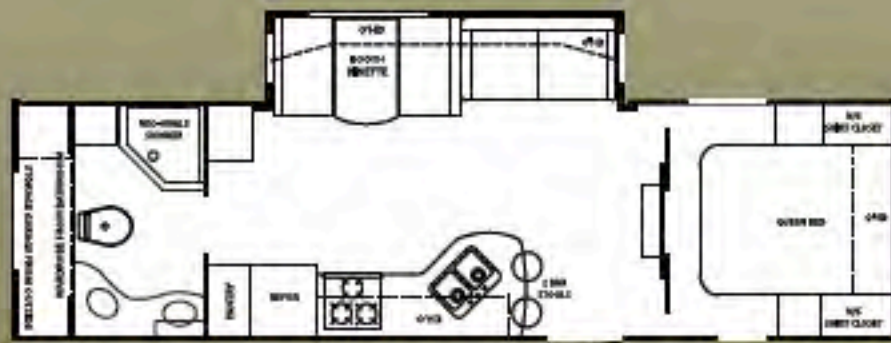
**29BHSS**

GVWR: 8,600 lb. Dry: 6,470 lb.  
Hitch: 730 lb. Length: 33'-5"  
Height: 10'-10"



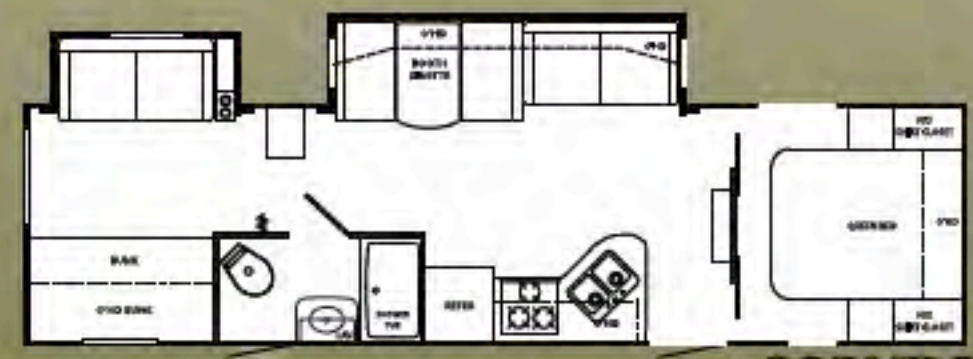
**32BHDS**

GVWR: 8,600 lb. Dry: 6,995 lb.  
Hitch: 814 lb. Length: 35'-5"  
Height: 10'-10"



**29RBSS**

GVWR: 8,600 lb. Dry: 6,450 lb.  
Hitch: 718 lb. Length: 33'-5"  
Height: 10'-10"



**32BHDS**

GVWR: 8,600 lb. Dry: 6,995 lb.  
Hitch: 814 lb. Length: 35'-5"  
Height: 10'-10"



**30RLSS**

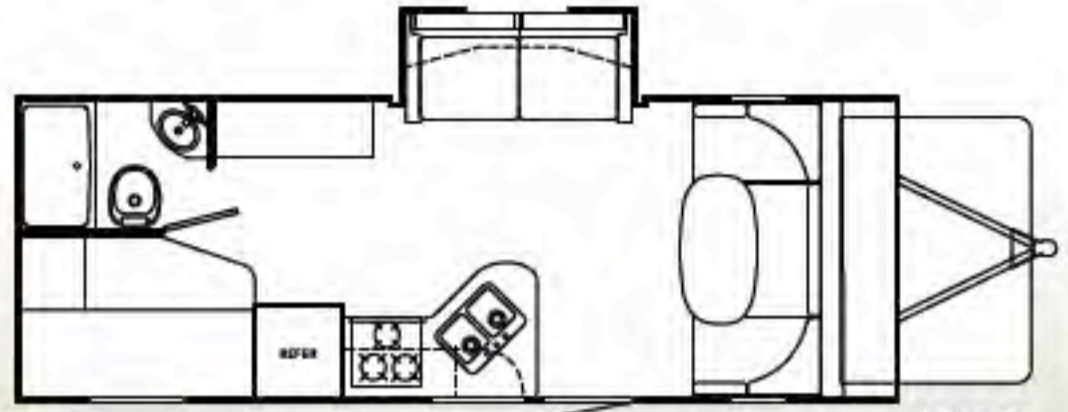
GVWR: 8,600 lb. Dry: 6,493 lb.  
Hitch: 810 lb. Length: 34'-5"  
Height: 10'-10"



**32QBSS**

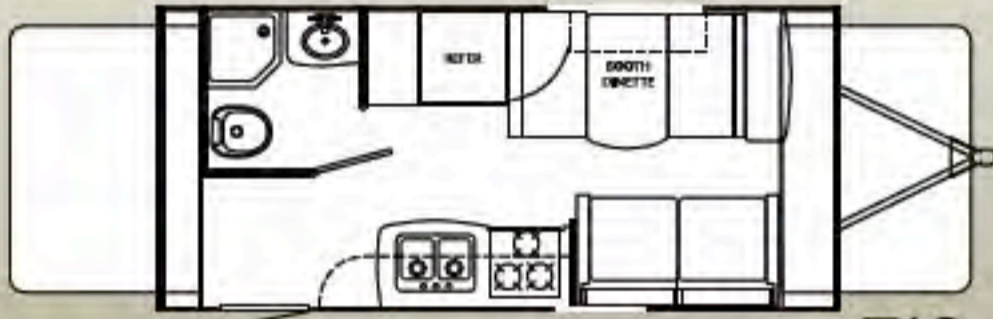
GVWR: 8,600 lb. Dry: 6,999 lb.  
Hitch: 708 lb. Length: 35'-5"  
Height: 10'-10"

# Maxum Wild **Tent Ends** - Lightweight & Roomy Design



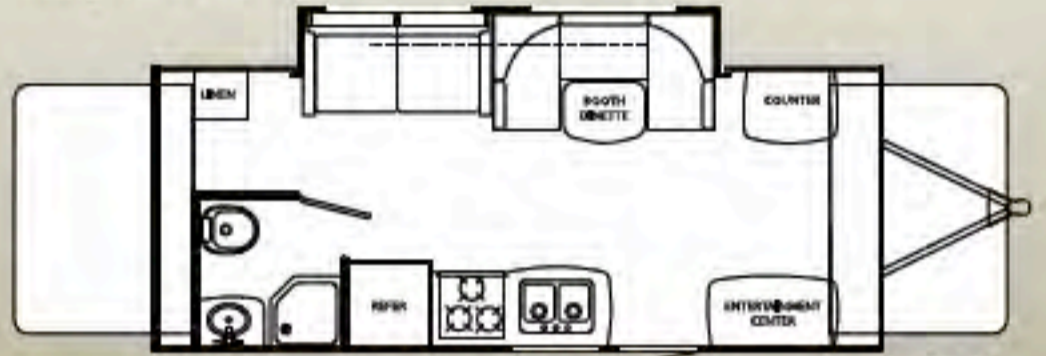
GVWR: 6,900 lb. Dry: TBD  
 Hitch: TBD Length: TBD  
 Height: 9'-10"

**T22**



GVWR: 6,900 lb. Dry: TBD  
 Hitch: TBD Length: 21'-2"  
 Height: 9'-10"

**T19**



GVWR: 6,900 lb. Dry: 4,656 lb.  
 Hitch: 492 lb. Length: 24'-3"  
 Height: 9'-10"

**T20**

# Maxum Wild

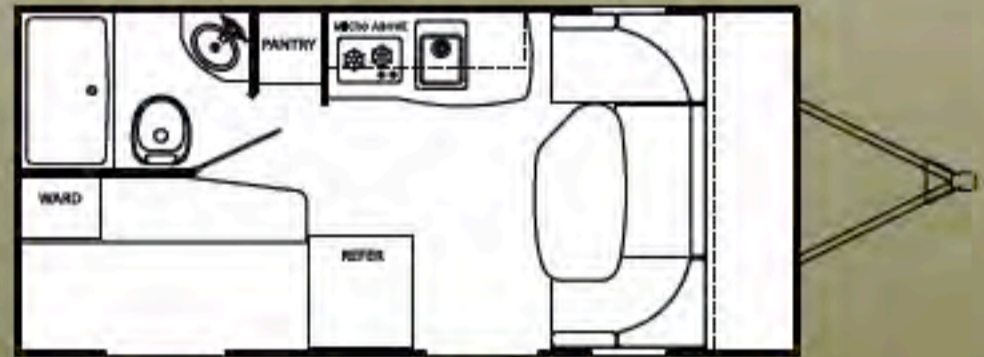
**FX**

**7.5' Wide!**



GVWR: 3500 Dry: 2795  
 Hitch: 208 Length: 16' 10"  
 Height: 9' 10"

**FX13**



GVWR: 4,900 lb. Dry: 3,785 lb.  
 Hitch: 344 lb. Length: 21'-2"  
 Height: 9'-10"

**FX19**



GVWR: 4,900 lb. Dry: 3,584 lb.  
 Hitch: 536 lb. Length: 21'-2"  
 Height: 9'-10"

**FX18**

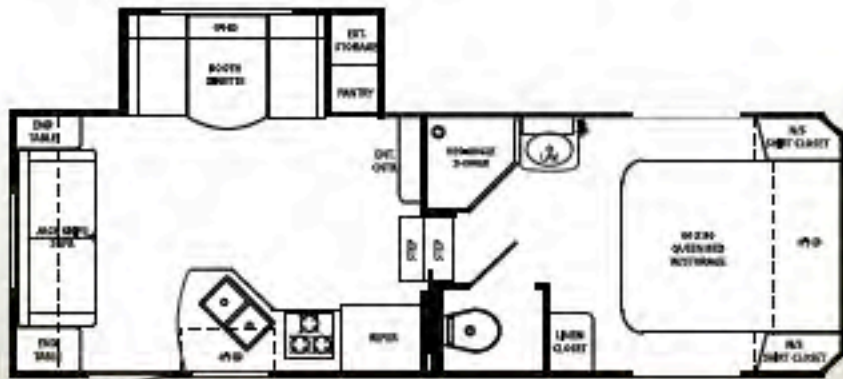


GVWR: 4,900 lb. Dry: 3990  
 Hitch: 370 Length: 24' 5"  
 Height: 9'-10"

**FX21**

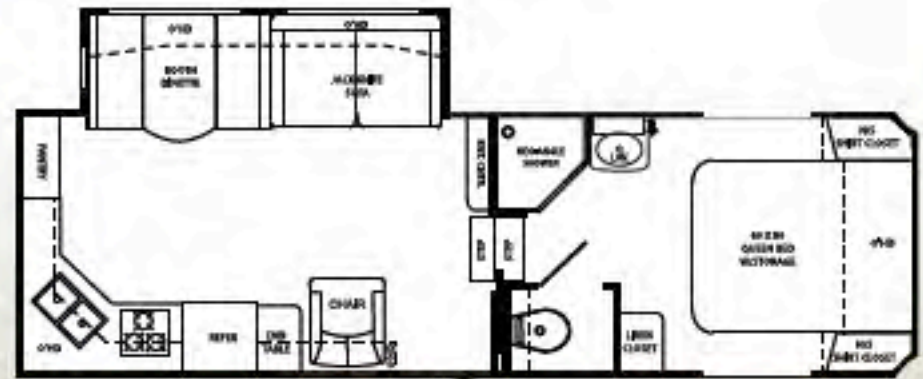
# Maxum Wild

## Fifth Wheels - Aerodynamic & Efficient



GVWR: 11,295 lb. Dry: 6,610 lb.  
Hitch: 1,135 lb. Length: 26'-4"  
Height: 11'-10"

**24RL**



GVWR: 11,430 lb. Dry: 6,792 lb.  
Hitch: 1,270 lb. Length: 28'-5"  
Height: 11'-10"

**26RK**



GVWR: 11,600 lb. Dry: 7,180 lb.  
Hitch: 1,440 lb. Length: 30' 5"  
Height: 11'-10"

**287RL**



GVWR: 11,360 lb. Dry: 7,120 lb.  
Hitch: 1,200 lb. Length: 30'-5"  
Height: 11'-10"

**29RE**



GVWR: 11,360 lb. Dry: 7,120 lb.  
Hitch: 1,200 lb. Length: 30'-5"  
Height: 11'-10"

**28BH**





Shown in  
Canadian Breeze

MAXUM WILD Tent End owners enjoy abundant storage areas for all the necessary gear tucked away behind beautiful hardwood cabinet doors. Large dinettes provide comfortable seating for the whole family to enjoy mealtime, games or just hanging out.



The MAXUM WILD ultra lightweight fifth wheel features an abundance of Amish-crafted hardwood doors and drawers with full-extension steel ball-bearing drawer guides, radiused countertops, decorative glass inserts in the overheads and oil-rubbed bronze hardware - the MAXUM WILD fifth wheel rivals many traditional luxury fifth wheels in terms of interior eye appeal and features!



Shown in  
Canadian Breeze

# Maxum Wild

## Fifth Wheels - Spacious, Beautiful Design



Competitors  
Smaller 70"  
Beds Leave Your  
Feet Hanging  
Over the Edge!!

Shown in  
Canadian Wine

78"  
Queen

You'll appreciate the interior spaciousness found in the bedroom and bath area of the MAXUM WILD fifth wheel - smartly designed with deep wardrobes, a built-in shelf in the headboard area with electrical outlets and individual lights.



The MAXUM WILD's large neo-angle shower and nice sized lav base and mirrored medicine cabinet rival those found in much larger coaches - costing thousands more!



Shown in  
Canadian Breeze

# Maxum Wild

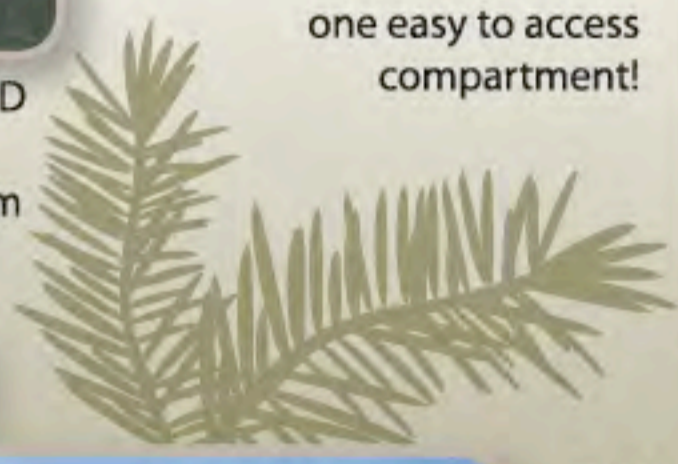
Impressive!



MAXUM WILD 5th Wheels feature Discover Canada RV's famous Universal Docking Center (UDC) where many of the unit's hook-ups are concealed in one easy to access compartment!



You'll be impressed with the MAXUM WILD 5th wheel's enormous pass-through exterior storage compartment - with room for all your travel storage needs!



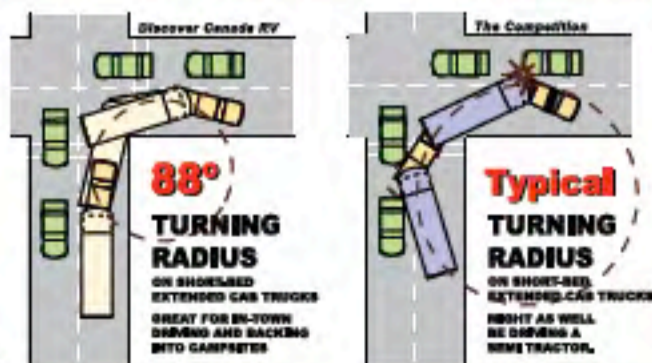
While you want to avoid walking on other light weight towables roofs - we were able to easily put this Rhino™ four wheeler with a driver on the roof of the Discover Canada RV Trailer featuring ALL ALUMINUM trusses with tapered Block Foam Bricks - laminated together for a longer lasting, much STRONGER construction!

**Talk about Strength!** The MAXUM WILD's Laminated Roof is not only strong enough to walk on, it's strong enough for you and your friends to watch the race from!

Our owners enjoy the benefit and flexibility provided by our Inside/Outside Free Standing Dinette Table. Take it outside when you want to Grill while listening to your favorite music through our stereo Exterior Speakers!



## ACHIEVE AN 88° TURN! IN A SHORT-BED, EXTENDED CAB TRUCK



MAXUM WILD's TRULY AERODYNAMIC Front Fiberglass Cap design offers MAXIMUM Fuel Efficiency, while the Upgraded LED Lights Provide Long-Term Durability and Safety as they are Brighter and Easier to See!





Where you purchase your recreational vehicle is ultimately your decision but Discover Canada RV urges you to consider buying at your local dealer. Dealers are part of your community, providing jobs and contributing to your local economy. These dealers are under obligation to provide warranty service for products they sell, but are not legally required to service products purchased from other dealers. At some point, you may need to return to the dealer you buy from - why not stay close to home?

#### **BENEFITS OF PURCHASING YOUR RV LOCALLY:**

- You enjoy valuable relationship building with Dealer Representatives, close to your home, who will explain the features and benefits of the product.
- You receive a full product orientation prior to delivery, which includes hands on directions for many of the coach's systems and functions. You are also introduced to the Dealership's Service/ Parts/ Warranty personnel who are at the ready to help you with any issues you may encounter, now and in the future.
- You enjoy customer PRIORITY. Dealerships generally service their purchasing customers first - others may experience long delays and miss opportunities to use their RV.

What is it worth for you to have a dealership's full attention and motivation to satisfy you when you need service - in a timely manner.

- Valuable TAX dollars and jobs stay in YOUR community which pays for your roads, schools, police and fire departments.

**For Canadian Residents:** If you purchase an RV out-of-country, there are additional fees, taxes and inspections that must be met before bringing your product home. Your local Canadian dealers are experts in these provisions.

### INTERIOR

- Radius Counter Tops
- Smoke Detector
- LP Detector
- Fire Extinguisher
- 8 ft. Wide-Body Design (excluding FX)
- 78" Interior Height (T.T.)
- Monitor Panel in Bathroom
- Cable TV Prep
- Dual Ducted 13.5 A/C
- 12V, AM/FM CD Player
- Raised Panel Overhead Cabinets Doors
- TV Antenna w/Booster

### KITCHEN

- Steel Ball-Bearing Drawer Guides -Full Extension
- Hi-Rise Kitchen Faucet
- Half-Time Convection Oven (Below counter)
- 9,000 BTU 3-Burner Cooktop (All 3 Burners High Output!)
- Residential Quality Linoleum Flooring
- Power Range Hood w/Light
- Double Door Refer
- Radiused Kitchen Counter Tops
- Acrylic Sink with Cover (5th Only - Cover)

### EXTERIOR

- 1-Piece ABS - Heated & Enclosed Underbelly
- E-Z Lube Hubs
- 4 Stab Jacks T.T. (2 on 5th)
- 14" Tires T.T. (15" on 5th)
- Outside Speakers
- Outside Shower
- Patio Awning
- Spare Tire (T.T. Std - 5th Opt)
- Exterior 120V Outlet
- Large Assist Entry Handle
- One Piece Rubber Roofing Material

### FEATURES

- Diamond Plate Front Rock Guard (T.T.)
- 25,000 BTU Furnace (35,000 BTU on King Slide Models)
- The FIRST UDC (Universal Docking Center) in a Lightweight, Mid-Pro 5th Wheel! (5th only)
- 6 Gallon Gas/Electric DSI Water Heater (T.T.)
- Fresh Water 36 Gal (T.T.) 47 Gal (5th)
- Gray/Black 37 Gal (T.T.) 40 Gal (5th)
- Electric Slide Outs
- Black Tank Flush System
- Texas Style Storage Doors
- XLT KITCHEN PACKAGE:
  - Upgraded Oil Rubbed Bronze Hardware
  - Upgraded Decorative Glass Inserts
  - Removable Dinette Table (inside/outside) (most models)
  - Large Viewing Window in Kitchen (T.T.)
  - Full Extension Ball Bearing Drawer Guides
  - Deep Pantry with Removable Shelves (most models)

### BEDROOM

- 78" Queen Bed, Foam (80" in 5th)
- Pullout Drawers in Bedbase (most models)
- Bedroom Night Stands
- Reading Lights
- 120V Outlets on Both Night Stands

### OPTIONS

- Power Awning
- RVQ Grill (T.T. Only)
- 15K A/C
- Aluminum Wheels
- 15" LCD TV w/ DVD Player (TT)
- 32" LCD TV (5th only)
- Fiberglass Front Cap (5th)
- Hitch Cover (5th)
- 78" Pillow-Top Mattress
- ToyLok

### BATH AREA

- Shower Skylight
- Tub Surround with Built-in Shelves
- Hardwood Medicine Cabinet
- Bathroom Power Vent w/Wall Switch
- Foot Flush Toilet

#### \* Lightweight Strength Package:

- Laminated Crowned Roof System
- Block Foam Brick Insulation
- Aluminum Construction (front, back and side walls, floor, roof)
- Enclosed and Heated Underbelly
- Radius Double Entry Step
- Tinted Safety Glass Windows
- 2" Thick (R-7) Sidewall Construction
- 4 Stabilizer Jacks with Sand Pads (T.T.)
- WIDE-TRAX Axle Placement (T.T.)
- HD Leaf Spring Suspension
- Dual 20 lb. LP Tanks (T.T.)
- Dual 30 lb. LP Tanks (5th)

Your Dealer



www.discovercanadarv.com

*the Canadian way, eh!*

As Discover Canada RV constantly strives to improve our product, all specifications listed in this informative brochure are subject to change without notice or obligation. Photos may show optional equipment which is not included in the purchase price of the unit. Review a current model on your dealer's lot today.