

WARRANTY FOR
FULL TIME RVING*
*REFERENCE KEYSTONE RV COMPANY OWNERS MANUAL FOR LIMITED WARRANTY DETAILS

EASTERN
COUGAR

LUXURY FIFTH WHEELS, HALF-TON FIFTH WHEELS & TRAVEL TRAILERS



KEYSTONE
RV COMPANY

CAMP BETTER

FORCE OF NATURE

Committed to cutting-edge innovation, quality, style, and affordability, Cougar offers a wide selection of travel trailers and fifth-wheel RV's designed for both half-ton and full-sized trucks. The Cougar line-up is designed to grow with your family, from your first RV to your last. Cougar takes the time to understand how you travel in each life stage so that we can provide families with the very best camping experiences, year after year, Cougar after Cougar.

State-of-the-art appointments:

- **Blade Pure™**
Coleman Mach Q Series air conditioning provides a quieter cool while MERV 9 filtration safely removes contaminants.
- **Residential, 12V, and RV refrigerators**
Whether you value a quick cool, residential feel, or dry camping capability there's an option for every kind of camper.
- **2" accessory receiver or towing hitch**
Every Cougar comes standard with a receiver hitch suitable for accessories approved for RV use. Select models feature a towing hitch allowing you to tow a watercraft up to 3,000 lb.
- **Road Armor™ suspension and pin box**
Equalizes axle load to dampen shock and vibration (fifth wheels only). Also helps to absorb towing shock and reduce the transfer of forces from the fifth wheel to the truck.
- **Ground Control® 3.0 auto leveling system**
Leveling jacks automatically level your RV within two minutes, with the touch of a button (most models).
- **Largest in-class freshwater tank capacities**
81 gallons in fifth wheels, 60 gallons in half-ton series travel trailers, and fifth wheels.
- **Washer/ dryer prep**
Spaciously designed front wardrobe closets allow for an all-in-one washer and dryer.
- **King Bed (standard in TT)**
Expansive sleeping space so you can always rest easy.
- **3 year warranty**
Every new Keystone RV comes with the industry's best three-year limited structural warranty.



Towing w/ Confidence Package

This optional package includes Goodyear® Endurance tires and TST® TPMS. Campers will enjoy increased tire life, fuel economy, and experience real-time pressure and temperature data.



Climate Guard

Best climate protection in the industry. Tested to a temperature rating up to 110°F and down to 0°F. 12V tank heaters included.



iN-Command® Generation 3 w/ Global Connect®

Systems monitoring and total control over power, slide rooms, awnings, HVAC, and more from a central monitoring panel or your smartphone.



Blade PURE™

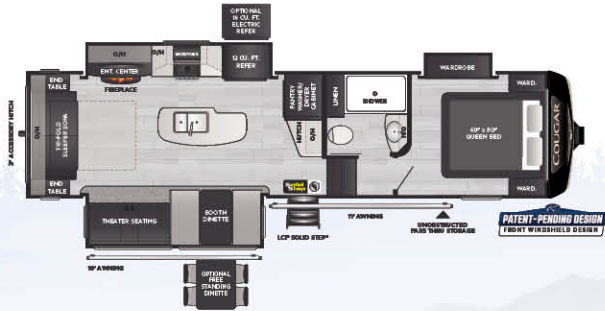
Engineered to a higher standard, Blade Pure™ removes airborne contaminants, reduces noise, and keeps you cooler than ever before.

VISIT KEYSTONERV.COM/COUGAR FOR IN-DEPTH PRODUCT INFORMATION, VIDEOS, MODEL 360'S AND MORE.

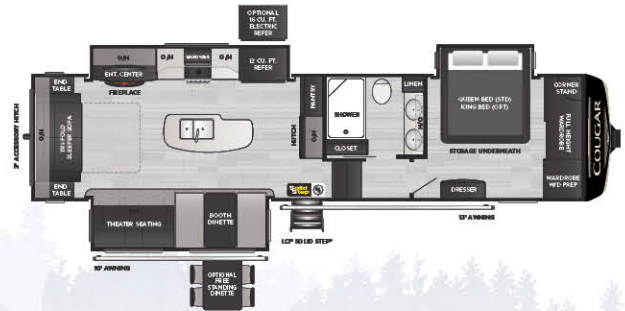
SCAN HERE TO LEARN MORE



LUXURY FW | COUGAR FIFTH WHEEL FLOORPLANS



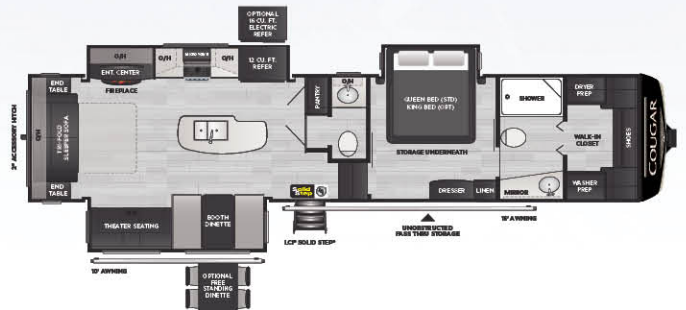
290RLS | Rear living, stackable W/D prep, three slides
WEIGHT 9981 LENGTH 33' 9"



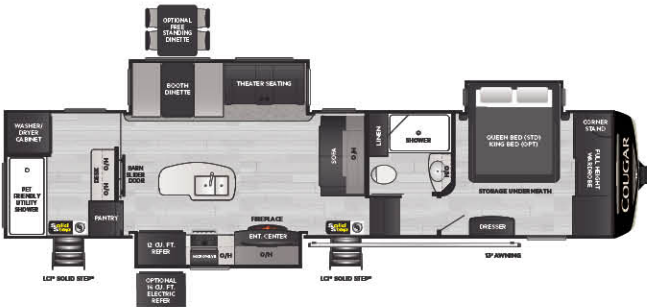
316RLS | Double vanity, rear living room, three slides
WEIGHT 10436 LENGTH 35' 9"



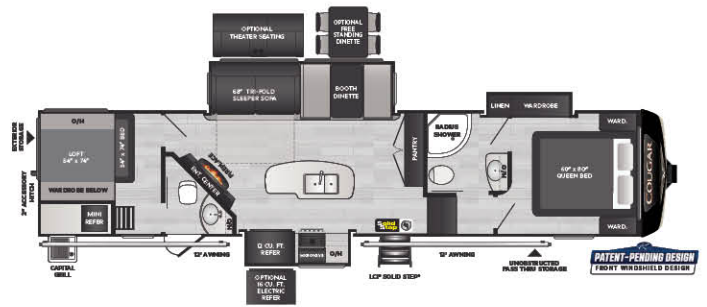
354FLS | Front living, pull-out rear storage tray
WEIGHT 10910 LENGTH 39' 4"



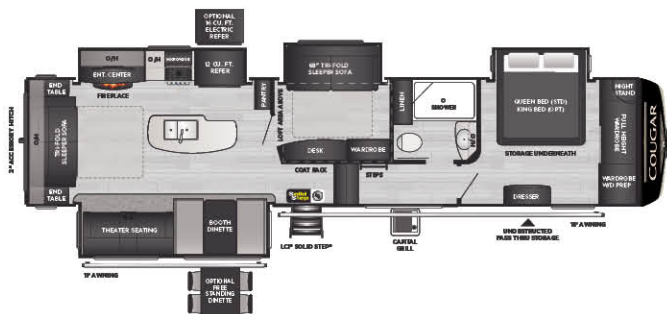
355FBS | 1/2 front bath/rear living, walk-in closet
WEIGHT 11190 LENGTH 39' 3"



357UMR | Utility mud room, stackable W/D prep
WEIGHT 11115 LENGTH 39' 4"



364BHL | 2 bedroom, bath and a half w/ loft
WEIGHT 11246 LENGTH 39' 2"

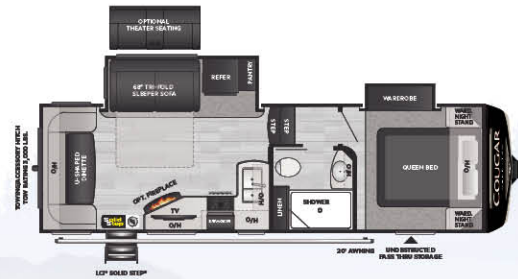


368MBI | Bonus room w/ loft, island kitchen
WEIGHT 11751 LENGTH 39' 4"

HALF-TON FW | COUGAR FIFTH WHEEL FLOORPLANS



23MLS | Short, rear kitchen w/ wardrobe slide
WEIGHT 7107 LENGTH 26' 10"



24RDS | Rear dinette, two slides
WEIGHT 7369 LENGTH 28' 11"



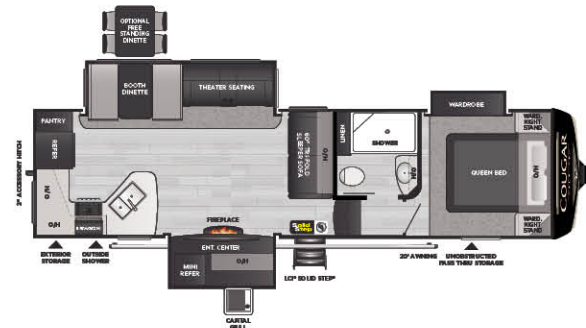
25RES | Rear entertainment, outside kitchen
WEIGHT 7630 LENGTH 28' 10"



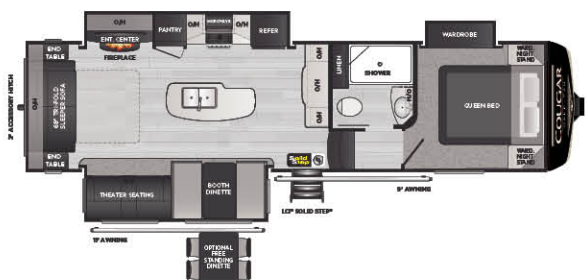
27SGS | Spacious rear living room, wardrobe slide
WEIGHT 8101 LENGTH 30' 7"



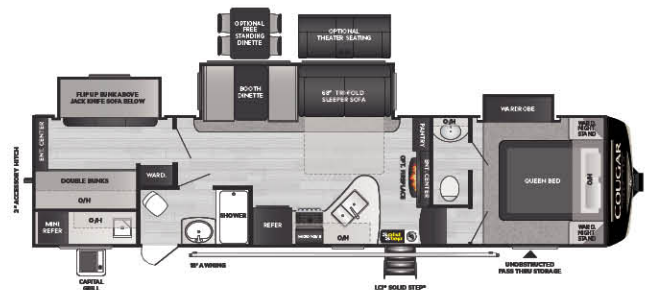
29MBS | Mid-bonus room, large kitchen
WEIGHT 8893 LENGTH 32' 10"



29RKS | Rear kitchen, open concept w/ outside kitchen
WEIGHT 8801 LENGTH 32' 10"

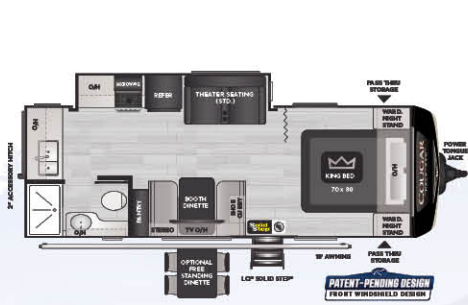


NEW!
29RLI | Rear living room, gourmet kitchen
WEIGHT TBD LENGTH 32' 10"

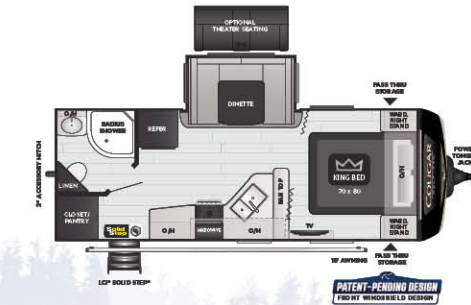


32BHS | 1/2 bath bunkhouse
WEIGHT 9292 LENGTH 35' 9"

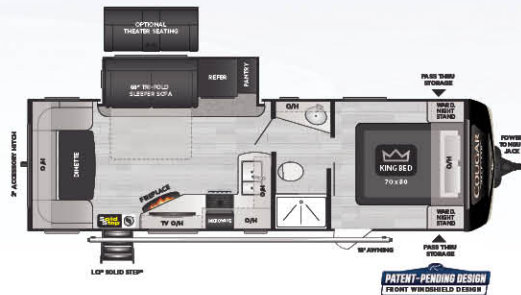
HALF-TON TT | COUGAR EASTERN TRAVEL TRAILER FLOORPLANS



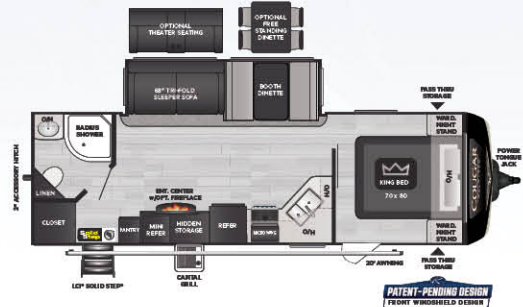
Spacious mid-living, king bed
WEIGHT 5731 LENGTH 37' 7"



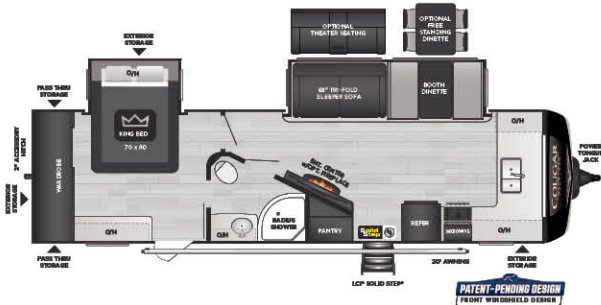
Spacious, rear bath, large dinette slide
WEIGHT 5586 LENGTH 25' 11"



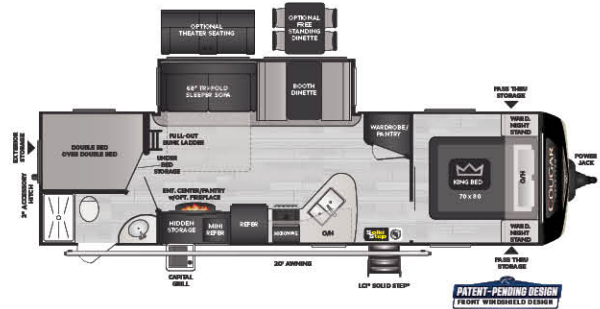
Huge rear dinette, countertop space, private bedroom
WEIGHT 6211 LENGTH 29' 10"



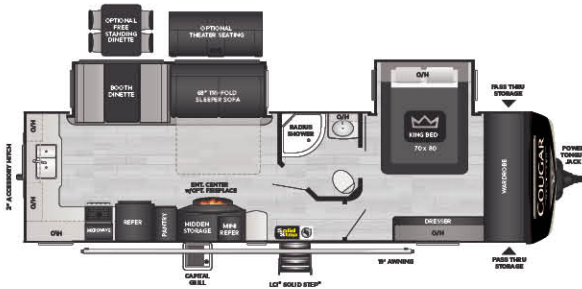
Rear bath w/ outside kitchen
WEIGHT 6644 LENGTH 29' 11"



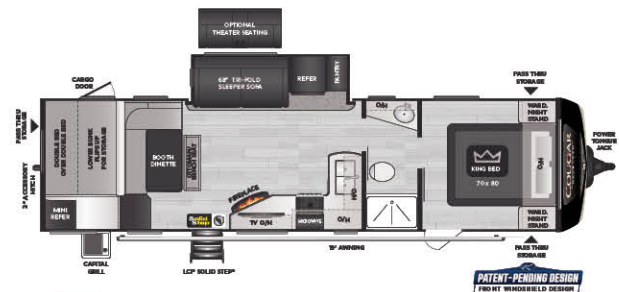
Front kitchen, large private bedroom w/ king bed slide
WEIGHT 7577 LENGTH 33' 11"



Multi-purpose bunkhouse w/ outside kitchen
WEIGHT 7077 LENGTH 34' 1"



Rear kitchen, king bed slide w/ large front closet
WEIGHT 7602 LENGTH 34' 9"

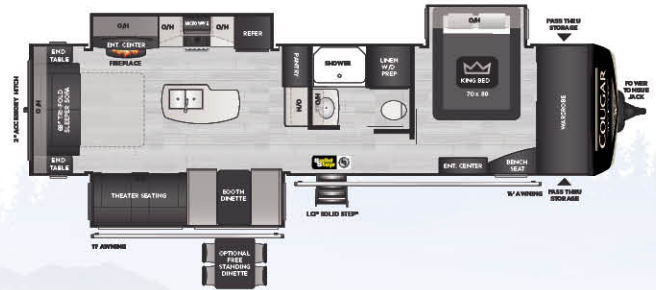


NEW!
Rear bunk loft w/ full basement storage
WEIGHT TBD LENGTH 34' 5"

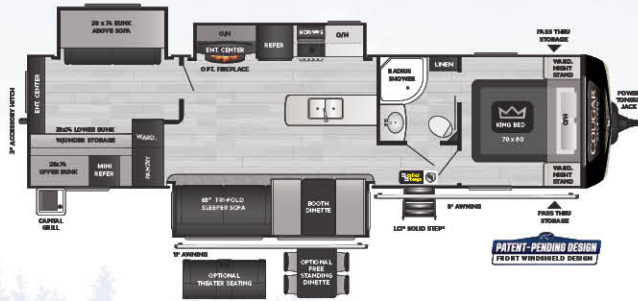
HALF-TON TT | COUGAR EASTERN TRAVEL TRAILER FLOORPLANS



32RLI Rear living room, three slides w/ bedroom slide
 WEIGHT 8321 LENGTH 35' 11"



NEW! **33RLI** Rear living room, king bed slide w/ large front closet
 WEIGHT TBD LENGTH 37' 5"



34TSB Three-slide bunkhouse w/ outside kitchen
 WEIGHT 8521 LENGTH 37' 5"



VISIT KEYSTONERV.COM/COUGAR FOR IN-DEPTH PRODUCT INFORMATION, VIDEOS, MODEL 360'S AND MORE.



MID-PROFILE FIFTH WHEELS

MODEL	WEIGHT	CARRYING CAPACITY	HITCH WEIGHT	FRESH WATER	WASTE WATER	GRAY WATER	LPG	LENGTH*	HEIGHT 1-A/C	HEIGHT 2-A/C
290RLS	9981	2219	1805	81	38	76	60	33' 9"	12' 8"	13' 4"
316RLS	10436	1864	1900	81	38	76	60	35' 9"	12' 11"	13' 4"
354FLS	10910	3090	2365	81	38	76	60	39' 4"	12' 11"	13' 4"
355FBS	11190	2710	1900	81	76	76	60	39' 3"	12' 11"	13' 4"
357UMR	11115	2885	2115	81	76	76	60	39' 4"	13' 3"	13' 4"
364BHL	11246	2754	2200	81	76	76	60	39' 2"	12' 11"	13' 4"
368MBI	11751	2229	1980	81	38	76	60	39' 4"	12' 11"	13' 4"

HALF-TON FIFTH WHEELS

MODEL	WEIGHT	CARRYING CAPACITY	HITCH WEIGHT	FRESH WATER	WASTE WATER	GRAY WATER	LPG	LENGTH*	HEIGHT 1-A/C	HEIGHT 2-A/C
23MLS	7107	2893	1335	60	30	60	60	26' 10"	12' 0"	12' 9"
24RDS	7369	2631	1430	60	30	60	60	28' 11"	12' 0"	12' 9"
25RES	7630	2370	1505	60	30	60	60	28' 10"	12' 0"	12' 9"
27SGS	8101	2189	1495	60	30	60	60	30' 7"	12' 0"	12' 9"
29MBS	8893	2107	1630	60	30	60	60	32' 10"	12' 0"	12' 9"
29RKS	8801	1599	1605	60	30	60	60	32' 10"	12' 0"	12' 9"
29RLI	TBD	TBD	TBD	60	30	60	60	32' 10"	12' 8"	12' 8"
32BHS	9292	2208	1570	60	60	60	60	35' 9"	12' 2"	12' 11"

HALF-TON EASTERN TRAVEL TRAILERS

MODEL	WEIGHT	CARRYING CAPACITY	HITCH WEIGHT	FRESH WATER	WASTE WATER	GRAY WATER	LPG	LENGTH*	HEIGHT
22MLS	5731	1469	645	60	30	30	60	26' 10"	11' 5"
22RBS	5586	1614	630	60	30	30	60	25' 11"	11' 5"
25RDS	6211	2589	835	60	30	60	60	29' 10"	11' 5"
26RBS	6644	2156	880	60	30	60	60	29' 11"	11' 5"
29BHS	7077	1723	765	60	30	60	60	34' 1"	11' 5"
29FKD	7577	1923	910	60	30	60	60	33' 11"	11' 5"
30RKD	7602	1898	955	60	30	60	60	34' 9"	11' 5"
30BHS	TBD	TBD	TBD	60	30	60	60	34' 5"	11' 5"
32RLI	8321	2179	1165	60	30	60	60	35' 11"	11' 4"
33RLI	TBD	TBD	TBD	60	30	60	60	37' 5"	11' 4"
34TSB	8521	1979	1150	60	30	60	60	37' 5"	11' 4"

DISCLAIMER: Product information is as accurate as possible as of the date of publication of this brochure. All features, floor plans, and specifications in this brochure are subject to change without notice. Please also consult Keystone's web site at www.keystonerv.com for more current product information and specifications. Tow Vehicle Disclaimer. CAUTION: Owners of Keystone recreational vehicles are solely responsible for the selection and proper use of tow vehicles. All customers should consult with a motor vehicle manufacturer or their dealer concerning the purchase and use of suitable tow vehicles for Keystone products. Keystone disclaims any liability or damages suffered as a result of the selection, operation, use or misuse of a tow vehicle. KEYSTONE'S LIMITED WARRANTY DOES NOT COVER DAMAGE TO THE RECREATIONAL VEHICLE OR THE TOW VEHICLE AS A RESULT OF THE SELECTION, OPERATION, USE OR MISUSE OF THE TOW VEHICLE. *Length is defined as the distance from the centerline of hitch pin/coupler to rear bumper of trailer. Please review owner's manual prior to purchase for more information on service warranties, extended use, towing and maintenance. Owner's manuals can be found at keystonerv.com.

SCAN HERE TO LEARN MORE



LAUNCHING AS STANDARD EQUIPMENT ON ALL KEYSTONE
TRAVEL TRAILERS AND FIFTH WHEELS, FALL 2021

A photograph of several RVs parked at a campsite during sunset or sunrise. The scene is bathed in warm orange and yellow light. The RVs are parked on a paved area, and there are trees and a body of water in the background.

TAKE CHARGE OF HOW YOU CAMP

The Solar Energy System You've Been Waiting For

Impossibly versatile, exceptionally designed, SolarFlex is shattering customers' expectations of factory-installed solar power. SolarFlex eliminates the guesswork to deliver affordable, high quality solar energy systems.

Cougar offers SolarFlex 200 as standard, with the option to upgrade to SolarFlex 400i or SolarFlex 600i-L on most models.



Learn more about the
SolarFlex difference and
packages now available.

