

# Titanium

THE WORLD'S BEST IN...

- AERODYNAMICS
- LIGHT WEIGHT CONSTRUCTION
- EXCLUSIVE FLOORPLANS
- SAFER TOWING



**2007 BUYER'S GUIDE**

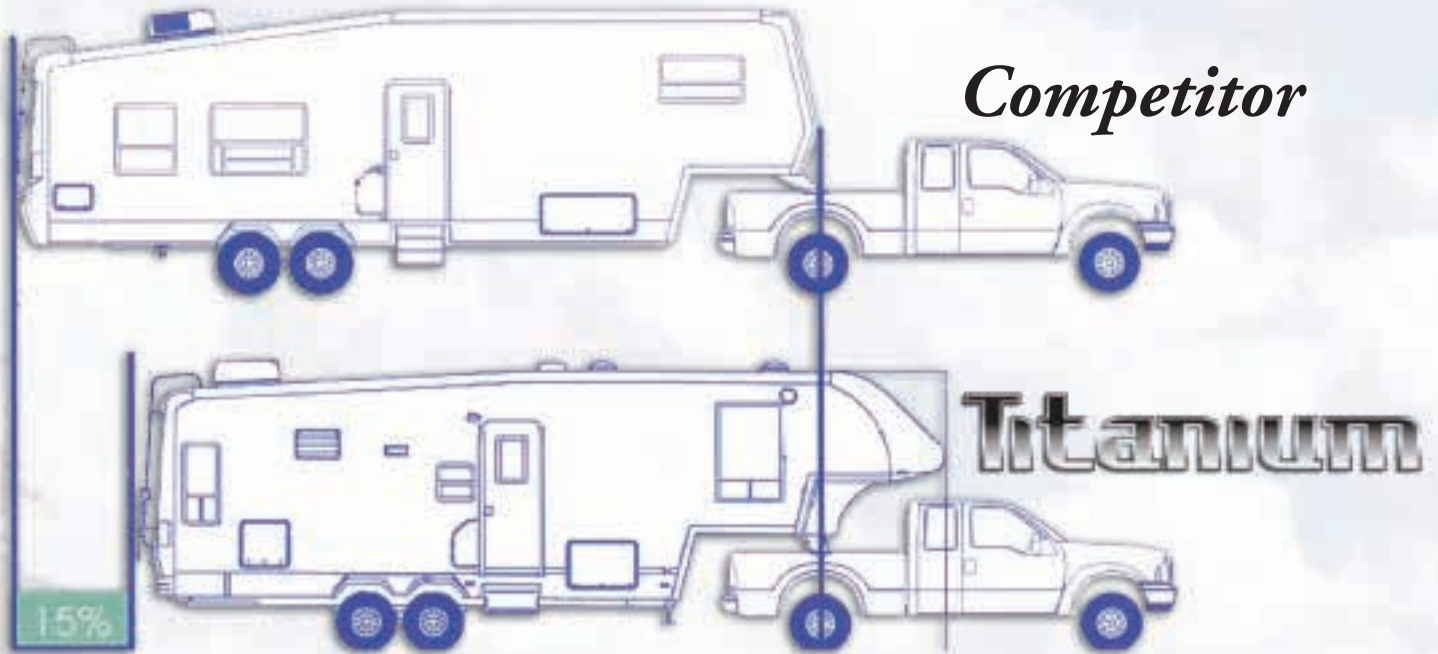
EXCLUSIVE ADVANTAGES

# UNIQUE DESIGN

## Patented Front cap Design Advantage...

### Cab Over

The illustration below compares two fifth wheels of EQUAL overall length. The fifth wheel truck and trailer combination on the top image shows a conventional fifth wheel pin box and front Cap design. The Titanium image below shows the Advantage of the Unique Cab over Front Cap design and pin box position.



The Titanium illustration shows a 15% shorter tow length VS the very same overall competitor length.



“My drivers have logged over 15 million miles in the last 5 years towing Titanium and we have achieved huge fuel savings of up to 2 miles to the gallon”

*Ron Thompson - President RT Cartage  
Recreational Vehicles Delivery Service*

# EXCLUSIVE FLOORPLANS

Bedroom / Bath



**Titanium**

VS



**Competitor**

Compare the 2 floorplans above...

**1. Do you want your bathroom in your bedroom?**

The competitor's floorplan provides an open, unobstructed view of the sink and shower. Not so with the Titanium's floorplan which offers much greater privacy.

**2. Do you want your guests to have to visit your bedroom to use the bathroom facilities?**

The Titanium floorplan keeps bathroom facilities in the bathroom and not in the bedroom. The Titanium design offers solid door privacy between the bedroom and the bathroom unlike the competitor's curtains.

**3. Is bed position important for a quiet comfortable sleep?**

The patented Titanium front end design features R24 insulation at the head of the bed. R24 provides whisper quiet comfort for a restful sleep, superior to the competitor's R5 thinly "if" insulated bed slide structures.

**4. Would you want large bedroom windows?**

The unique Titanium bedroom has large windows which provide superior cross ventilation. Our windows are located on the RV sidewalls keeping them completely away from the mattress edge. Typically the competitor's small windows rest against the bed mattress in slideout end walls offering very little ventilation.

**5. Would you want carpet in your bathroom?**

Titanium floorplans DO NOT. Many manufacturers save cost by installing carpeting in the bathroom area rather than including practical moisture proof coverings like the Armstrong brand vinyl used in all Titanium bathrooms.

**6. Can your bedroom allow a quiet uninterrupted sleep?**

Titanium bedrooms feature a residential style "soundproof" solid door which separates the bedroom from the remainder of the RV interior unlike the accordion style (consistency) drape which competitors use.

**7. Do you require lots of bedroom storage?**

Titanium models include 4 large underbed pull style drawers, 4 chest style drawers, and the extra convenience of a large bedroom wardrobe on most models. Having the large pull out drawers is very practical for organization and everyday use.

**8. Residential Shower?**

Don't settle for the competitor's smaller shower when you can get Titanium's larger KING SIZE shower with the added luxury of a sitting area.

**9. Does the bathroom area provide adequate space?**

When you draw the accordion style drape in the competitor's models the usable floor space is greatly reduced. All Titanium models provide practical comfort and a very generous change area.

**10. Residential Nightstands?**

The Titanium bedroom includes 2 large nightstands with drawers located beside the bed where they belong, whereas our competitor's floorplans don't have the space to include full size nightstands.



# SAFER TOWING



DEXTER AXLE

**HYDRAULIC  
DISC  
BRAKES**



- Fixed caliper opposing piston technology as used in racing for superior durability
- Self-adjusting calipers eliminate manual brake adjustments
- Brake pads can be replaced without removing caliper
- Improved resistance to brake fade
- Lower maintenance cost
- Quieter smoother controlled braking
- Two-year limited warranty

## TAME THE STEEPEST GRADES



### RE Suspension System

Every Titanium comes equipped with the RE Suspension System

Advantage...

*"30% better protection against damaging road shock for your Fifth Wheel and interior cargo"*

*"Result is a smoother, stable controlled towing experience"*



### NEV-R-LUBE

SEALED CARTRIDGE BEARING SYSTEM

**Never needs greasing  
or re-packing!!!**

**N**o more inner and outer bearings!

**N**o need to pull the hubs to repack the bearings!

**N**o need to replace seals when you check the brakes!

# AERODYNAMICS

## TRACK TEST PROVEN

Titanium fifth wheels are put to the test both for towability and product durability evaluations. The results of these track tests help continually to improve our products.

### World's Best Aerodynamic Fifth Wheel Design Has it's *Advantages...*

- Significant Fuel Savings for the Tow vehicles up to 2 miles to the gallon.
- Better Stability and Handling for a controlled and safe towing experience.



- Reduced Wind Drag.
- Maximum turning radius with various truck bed configurations.

# 24E29

## WEIGHTS

Dry Pin Weight  
1, 628 lbs.

Dry Weight  
7,205 lbs.

GVWR  
9,952 lbs.



MAIN BODY WIDTH	OVERALL LENGTH	LENGTH PIN TO BUMPER	OVERALL HEIGHT	TANK CAPACITIES			SLEEPS	AWNING	ELECTRICAL HOOKUP	TIRES
				FR	GR	SEW				
96"	29'3"	24'1"	12'5"	63gal	49gal	49gal	4	13'	30amp	ST225/75R15C

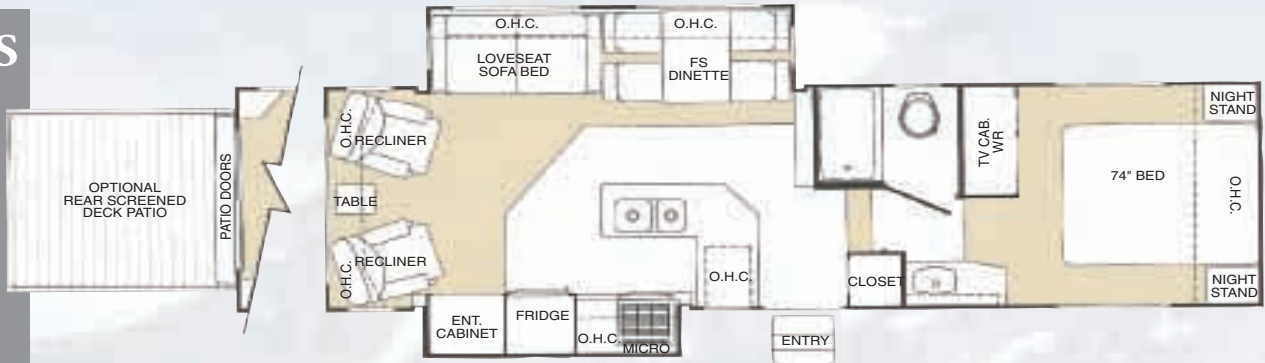
# 26E31DS

## WEIGHTS

Dry Pin Weight  
1, 760 lbs.

Dry Weight  
9,108 lbs.

GVWR  
11,600 lbs.



MAIN BODY WIDTH	OVERALL LENGTH	LENGTH PIN TO BUMPER	OVERALL HEIGHT	TANK CAPACITIES			SLEEPS	AWNING	ELECTRICAL HOOKUP	TIRES
				FR	GR	SEW				
96"	32'4"	27'	12'5"	63gal	49gal	49gal	4-6	18'	30amp	ST235/80R16D

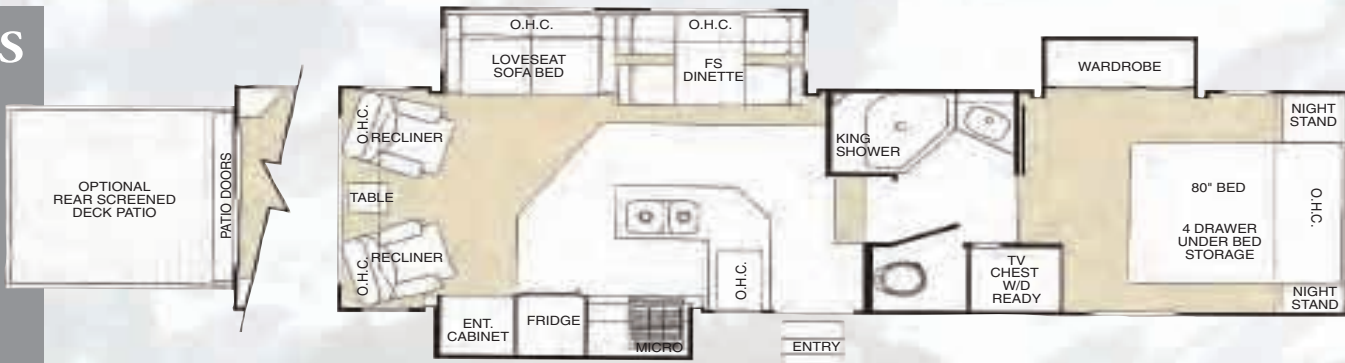
# 28E33TS

## WEIGHTS

Dry Pin Weight  
2, 151 lbs.

Dry Weight  
10,401 lbs.

GVWR  
12,981 lbs.



MAIN BODY WIDTH	OVERALL LENGTH	LENGTH PIN TO BUMPER	OVERALL HEIGHT	TANK CAPACITIES			SLEEPS	AWNING	ELECTRICAL HOOKUP	TIRES
				FR	GR	SEW				
96"	34'7"	29'5"	12'6"	63gal	49gal	49gal	4-6	19'	30amp	ST235/80R16D

# 29E34TS

## WEIGHTS

Dry Pin Weight  
2, 016 lbs.

Dry Weight  
10,354 lbs.

GVWR  
13,086 lbs.



MAIN BODY WIDTH	OVERALL LENGTH	LENGTH PIN TO BUMPER	OVERALL HEIGHT	TANK CAPACITIES			SLEEPS	AWNING	ELECTRICAL HOOKUP	TIRES
				FR	GR	SEW				
96"	34'11"	29'9"	12'8"	63gal	49gal	49gal	4-6	13'	30amp	ST235/80R16D

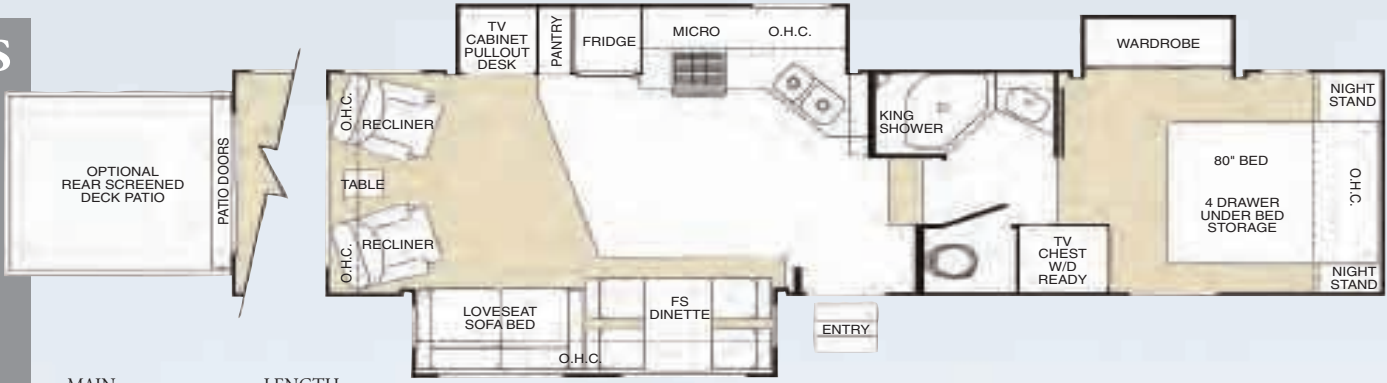
**NEW**  
**30E35TS**

**WEIGHTS**

Dry Pin Weight  
2, 098 lbs.

Dry Weight  
11,107 lbs.

GVWR  
13,894 lbs.



MAIN BODY WIDTH	OVERALL LENGTH	LENGTH PIN TO BUMPER	OVERALL HEIGHT	TANK CAPACITIES			SLEEPS	AWNING	ELECTRICAL HOOKUP	TIRES
96"	36'5"	31'3"	12'9"	63gal	49gal	49gal	4-6	13'	50amp (with detachable cord)	ST235/80R116D

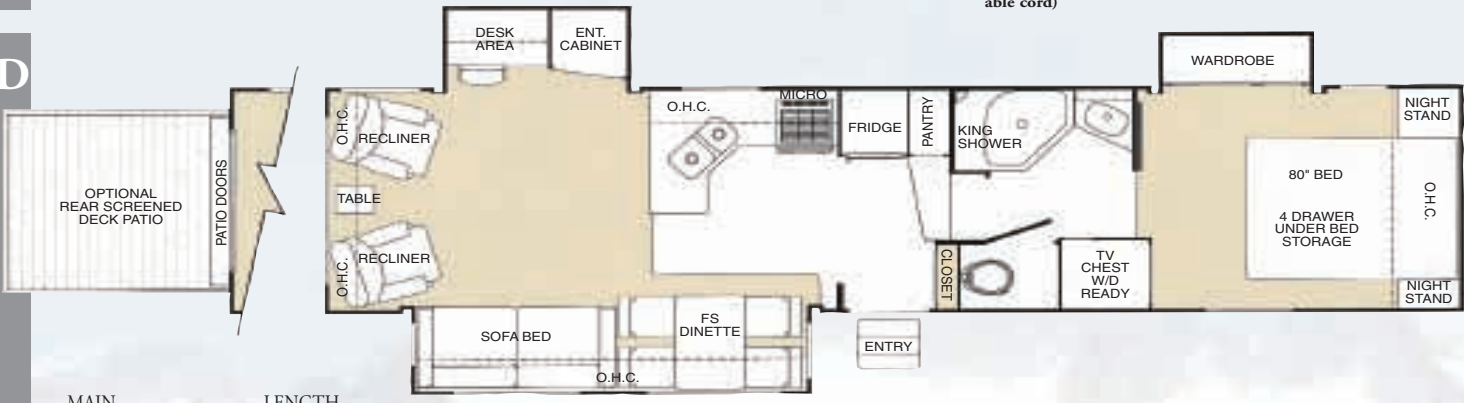
**32E37DSD**

**WEIGHTS**

Dry Pin Weight  
1, 967 lbs.

Dry Weight  
10,999 lbs.

GVWR  
13,698 lbs.



MAIN BODY WIDTH	OVERALL LENGTH	LENGTH PIN TO BUMPER	OVERALL HEIGHT	TANK CAPACITIES			SLEEPS	AWNING	ELECTRICAL HOOKUP	TIRES
96"	38'11"	33'8"	12'8"	63gal	49gal	49gal	4-6	15'	50amp (with detachable cord)	ST235/80R16D

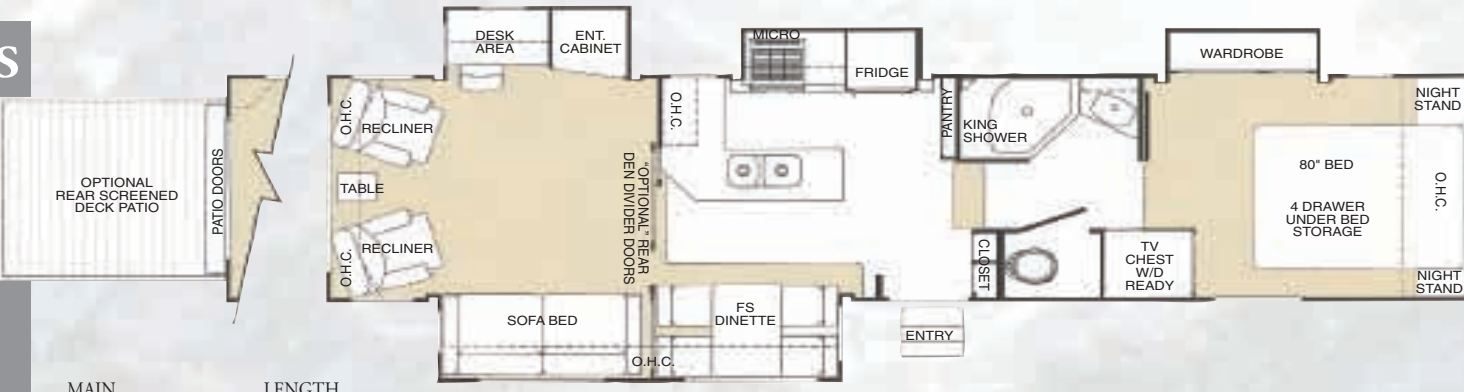
**34E39QS**

**WEIGHTS**

Dry Pin Weight  
2, 165 lbs.

Dry Weight  
11,858 lbs.

GVWR  
14,667 lbs.



MAIN BODY WIDTH	OVERALL LENGTH	LENGTH PIN TO BUMPER	OVERALL HEIGHT	TANK CAPACITIES			SLEEPS	AWNING	ELECTRICAL HOOKUP	TIRES
96"	39'1"	33'10"	12'8"	63gal	49gal	49gal	4-6	16'	50amp (with detachable cord)	ST235/80R16D

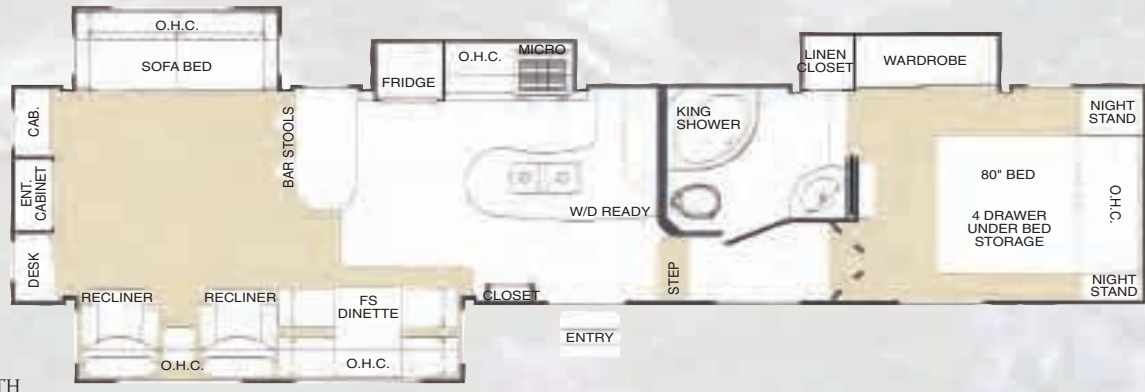
**NEW**  
**34E39RE**

**WEIGHTS**

Dry Pin Weight  
2, 279 lbs.

Dry Weight  
11,948 lbs.

GVWR  
14,338 lbs.



MAIN BODY WIDTH	OVERALL LENGTH	LENGTH PIN TO BUMPER	OVERALL HEIGHT	TANK CAPACITIES			SLEEPS	AWNING	ELECTRICAL HOOKUP	TIRES
96"	40'1"	34'10"	12'8"	63gal	49gal	49gal	4-6	16'	50amp (with detachable cord)	ST235/80R16D

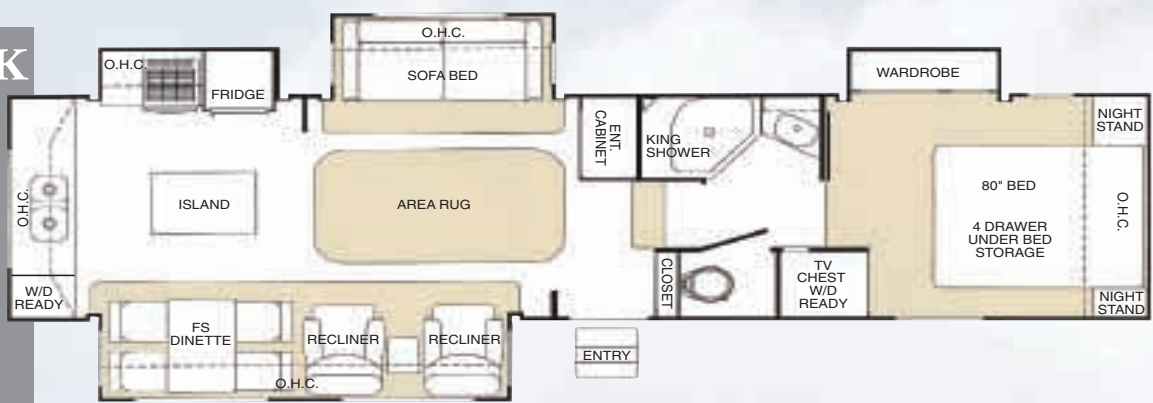
# 34E39RK

## WEIGHTS

Dry Pin Weight  
2, 490 lbs.

Dry Weight  
11,684 lbs.

GVWR  
14,544 lbs.



MAIN BODY WIDTH	OVERALL LENGTH	LENGTH PIN TO BUMPER	OVERALL HEIGHT	TANK CAPACITIES			SLEEPS	AWNING	ELECTRICAL HOOKUP	TIRES
				FR	GR	SEW				
96"	39'1"	33'10"	12'8"	63gal	49gal	49gal	4-6	14'	50amp (with detachable cord)	ST235/80R16D

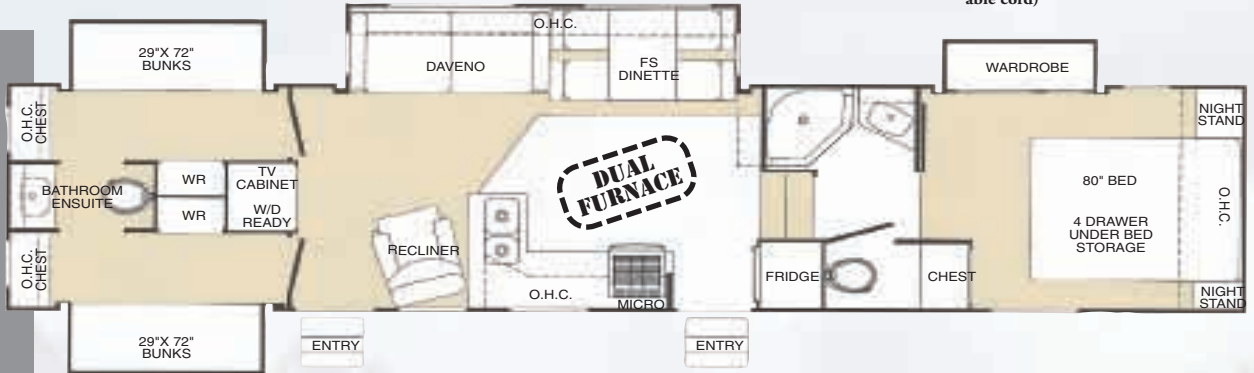
# 36E41

## WEIGHTS

Dry Pin Weight  
2, 215 lbs.

Dry Weight  
12,562 lbs.

GVWR  
15,703 lbs.



MAIN BODY WIDTH	OVERALL LENGTH	LENGTH PIN TO BUMPER	OVERALL HEIGHT	TANK CAPACITIES			SLEEPS	AWNING	ELECTRICAL HOOKUP	TIRES
				FR	GR (2)	SEW (2)				
96"	42'2"	36'11"	12'8"	63gal	49gal	49gal	8-10	21'	50amp (with detachable cord)	LT235/85R16G14

# 36E41MPRV

## WEIGHTS

Dry Pin Weight  
2, 950 lbs.

Dry Weight  
12,676 lbs.

GVWR  
15,432 lbs.



MAIN BODY WIDTH	OVERALL LENGTH	LENGTH PIN TO BUMPER	OVERALL HEIGHT	TANK CAPACITIES			SLEEPS	AWNING	ELECTRICAL HOOKUP	TIRES
				FR	GR	SEW				
96"	41'8"	36'6"	12'8"	63gal	49gal	49gal	4-6	20'	50amp (with detachable cord)	ST225/75R15D

# 2007 Floorplans & Specifications



**"Optional"  
Pre-production  
Bedroom /  
Bathroom  
Layout**

(on Select Models)



## STANDARD FEATURES

- Stereo TV
- DVD / CD 5.1 Surround Sound Entertainment System
- Atwood XT Water Heater
- Premium Exterior Graphics Package
- Never Lube Axle Hubs
- 400 watt Power Inverter
- Solid Surface Counter with molded deep sinks
- Porcelain Toilet
- Day/Night Shades
- Bathroom Skylight above Shower Area
- Awning
- Attic Vents
- Barbeque Quick Connect
- Baseboard and Ceiling Crown Molding
- Adjustable Reading Lights
- Satellite Dish Hookup
- 12 volt Power Boosted TV Antenna
- Phone Jack
- Park Cable Hookup
- Rear Stabilizer Jacks
- Roof Ladder
- Black Tank Flush System
- Exterior Shower
- Spare Tire and Rim
- 12V Re-chargeable Flashlight
- Fold-Away Entry Assist Handle
- Wide Track Easy Fold Triple Entry Steps
- Cartridge Style Water Filter
- Single Lever kitchen faucet with hand held rinse attachment
- Dual Motor Landing Gear with 12 volt shut off switch
- Free Standing Dinette
- High output 21" range with 3 burner, piezo ignitor
- 2 Stage Excalibur furnace up to 40,000 BTU
- 13,500 BTU thermal insulated ducted air conditioner

*To view all of our individual  
model specifications  
log on to...*

[www.glendalerv.com](http://www.glendalerv.com)

## POPULAR OPTIONS

(Pre-Production)

- Thermopane Windows
- Fluorescent Lighting
- Aluminum Rims
- Exterior Security Lights
- Electric Fireplace
- Washer Dryer Ready Hook-up (not available on 24E29, 26E31DS)
- Rear Screened Deck Patio (selected models see floorplans)
- Side Screened Deck Patio (36E41MPRV only)
- MorRyde Pin Box
- 9 Cubic Foot Fridge
- 10 Cubic Foot Fridge
- Plank Flooring
- Extended Pin Box Assembly
- Curbside Slideout Awning
- Retractable Rear Screen (36E41MPRV only)
- Generator Prep (Box and Venting)
- Generator Ready Basic Rough-in (LP/Electrical lines only)
- 30" Convection Microwave (not available on model 24E29)
- Stereo TV in Bedroom  
(not available on models 36E41 and 34E39RE)
- Video Command Center
- Rain Sensing Powered Roof Vent
- 13,500 BTU Second Air Conditioner
- 30", 1.7 cubic ft microwave (24", 1.3 cubic ft 24E29 only)
- Slide-out Toppers
- 32" LCD Flat Screen TV (34E39RE only)

## TOUR EDITION "OPTION"

(Pre-Production)

- Hydraulic Disc Brakes
- Premium Ultra-smooth High Gloss Fiberglass GEL-COAT Vacuum-bonded Fiberglass Siding
- MorRyde RE Suspension
- Deluxe Tour Edition Exterior Graphics

## COMFORT PACK "OPTION"

(Pre-Production)

- 15,000 BTU Air Conditioner with Quick Cool Down Draft Diverter
- Trickle Solar Charger
- Hepa Filter and Digital Wall Mount Dual Control Thermostat
- 12V Roof Vent in Bedroom Includes Rain Sensor
- Central Vacuum and Attachments
- Ceiling Fan in Living Area (not included on Model 24E29)

# 32E37DSD

*Earthtone Decor Scheme*



# 34E39QS



- Solid surface counter tops with deep double sinks fitting full plates and larger pots and pans.
- Higher and deeper slideouts allow for larger windows and built in OHC's for added storage.
- Smarter use of flooring area with no carpet in the kitchen or bathroom area's.
- Our Free Standing dinette includes extension flip up table and under seat storage.
- Adjustable style reading lights recessed under the overhead cabinets.



34E39RE

Check out the New Virtual Tours at [www.glendalerv.com](http://www.glendalerv.com)

# 34E39RE

*Taupe Decor Scheme*



*The mixing valve  
blends Super Heated Hot  
and Fresh Water to provide*  
**16 GALLONS**  
*of Hot Water!!!!*



**H<sub>2</sub>O<sup>T</sup>**  
**Atwood XT**  
Advanced Water Heater Systems Featuring Electronic Technology

*“Not your typical 10 Gallon” Water Heater*

### **“Unique 2 Stage Furnace”**

Choose your desired temperature and let the furnace continually monitor your comfort level — automatically! Operating on High BTU, High Fan for quick, quiet warm up, the furnace will automatically switch to low BTU, Low Fan to maintain the desired temperature.

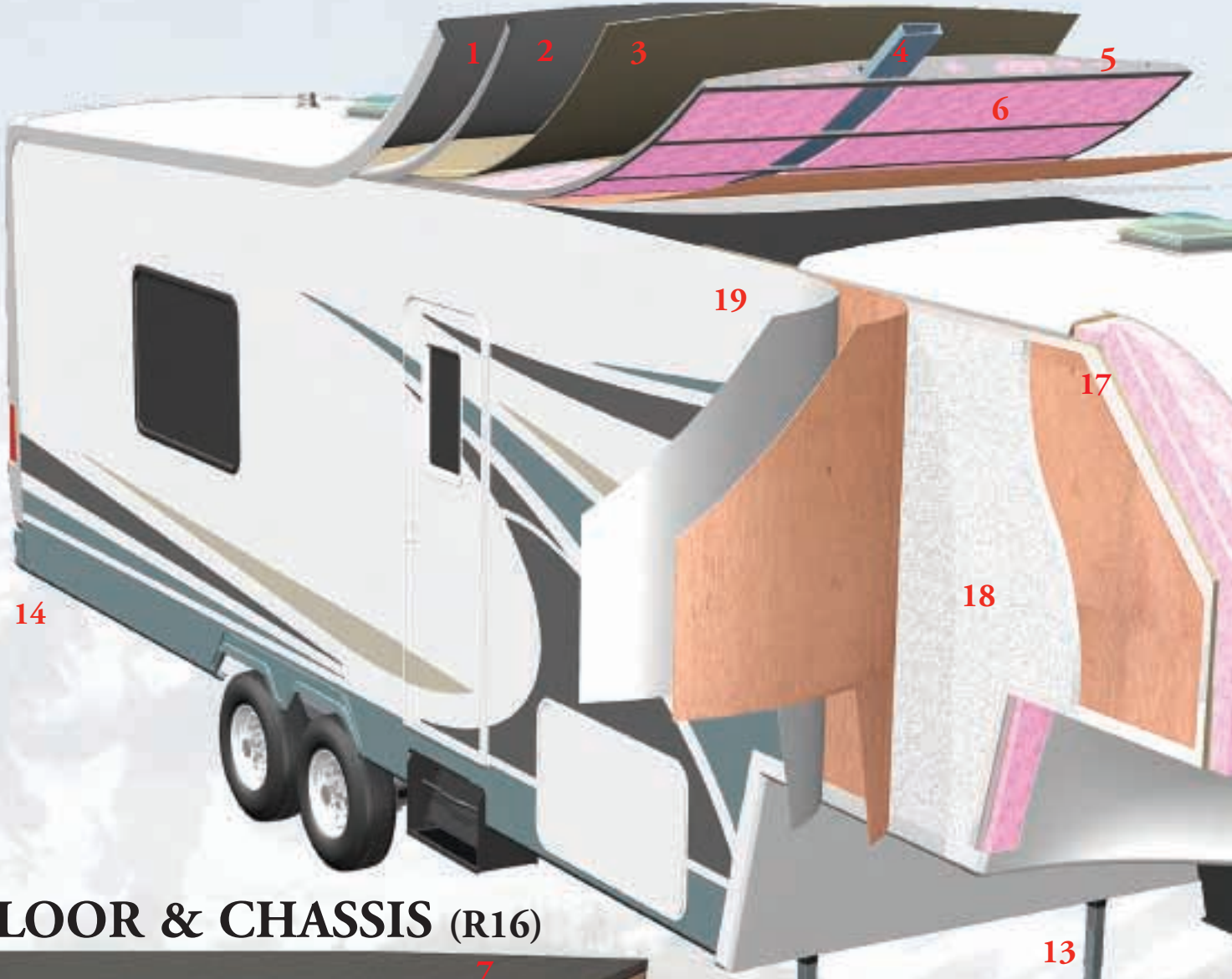
*“No more waking up in the middle of the night  
to a noisy bumping furnace.”*

Air Conditioner/Furnace are on the same digital controlled thermostat.

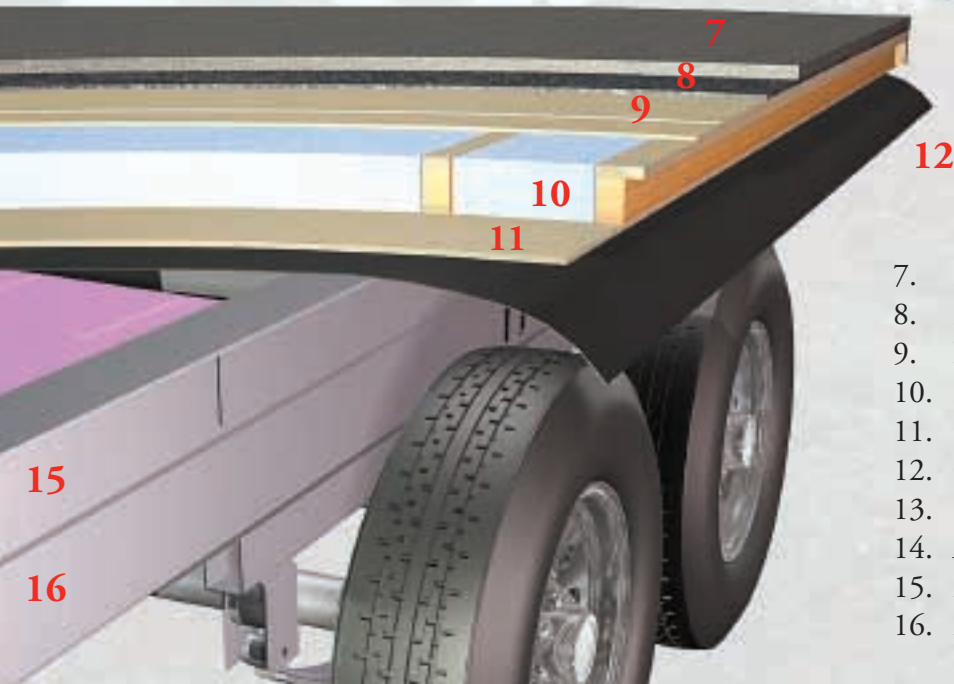


# ROOF (R14)

1. Seamless one piece rubber roof
2. Aluminum radius roof wrap
3. 3/8" plywood decking
4. Foam core insulated air conditioning duct
5. 4 1/2" metal roof truss style rafter 16" O.C.
6. Thick fiberglass batt insulation



# FLOOR & CHASSIS (R16)



\*Raise and lower jack legs independently for easy leveling, and no blocking required

7. Residential grade 33 oz. carpet
8. Residential grade 1/2" underpad
9. Layer 1/8" plus 1/4" luan plywood
10. 3" high density foam insulation
11. 5/16" plywood (not structurewood)
12. One piece Darco polythelene moisture barrier
13. Dual motor front landing gear
14. ABS skirting
15. 2"x 6" steel "Z" frame
16. 2"x 5" steel tube frame

# Titanium

US PATENT 6,394,533

**“STRENGTH is Our  
CONSTRUCTION”**

**“We use Real Plywood, not  
Structure Board.”**

## **SIDEWALL (R9)**

- 17. 1-1/2” aluminum perimeter framing
- 18. 1-1/2” rigid foam insulation
- 19. Ultra smooth high gloss Gel-Coat fiberglass
- 20. Front Cap Insulation (R24)

*Vacuum Bonded Sidewall  
Construction*

**“The STRENGTH is in the  
LAMINATION”**

## **EXTERIOR ADVANTAGES**

### **Slideout Advantage**

- Sides of our slideouts are tapered so the top meets the sidewall first, which ensures a complete tight seal before the bottom comes in.
- Electric rack and pinion operates with separate motors for each slide. Hydraulic systems have one motor and if it fails, all slides fail.

**\*ABS Bumper/Skirting  
Park Friendly**

**\*Deep Tinted Oversized Windows**



Visit Our Web Site @ [www.glendalerv.com](http://www.glendalerv.com)



The unique cargo room in the 36E41MPRV design accommodates the flexibility needed for today's busy lifestyle. It truly is a "Multi Purpose Recreational Vehicle".



*Imagine the Possibilities!*



**YEAR** **LIMITED**  
**3** **STRUCTURE**  
**WARRANTY**

*Glendale provides specific structural warranty coverage for a period of 3 years. All of our warranty commitments are valid in both Canada and the United States. All appliances are Name Brand, highly regarded products. See your dealer for complete warranty details.*

All photographs and specifications contained in this brochure are based on the latest product information at the time of publication approval. Some equipment shown or described throughout this guide may be available as an option only. Glendale has the right to add or discontinue models without prior notice, and to make changes at any time without notice in colors, materials, equipment, specifications, and models.

**Your Local Titanium Dealer:**

**GLENDALERV**



145 Queen Street, Strathroy, ON N7G 3J6