

CEDAR CREEK

BY FOREST RIVER



THE SMART CHOICE FOR THE
EXPERIENCED RV'ER.



36CKTS



THE SMART CHOICE

Experienced RV'ers know what they want, and Cedar Creek delivers their every desire for great leisure living. From the striking high gloss gelcoat fiberglass exterior, custom artwork graphics and the beautiful interior, Cedar Creek is the smart choice. You'll discover it offers the kind of quality and features that enhance the value and pleasure of your RV ownership.



This kitchen hutch includes a handy appliance garage to store your kitchen gadgets along with a sliding countertop for expanded workspace.



The central television cabinet location enhances viewing from both the kitchen and living room areas.



The bedroom slide-out houses a plush Forest River exclusive Serta® Perfect Sleeper queen mattress accented with a residential style designer headboard. Shown with optional upgraded bed and bathroom package.

Eight-inch deep drawers and an exceptionally deep closet provide an abundance of storage along with an overhead TV cabinet for late night viewing.



ENTERTAINMENT CENTER



Enjoy Cedar Creek's built-in entertainment center and cozy fireplace from the comfort of the standard fabric La-Z-Boy® recliners. A jack for cable TV, satellite, and phone/data port ensures you have all you need for your TV viewing and internet access.

Shown in optional leather



34SATS



34SATS Main Slide-Out



34TSA Main Slide-Out

BUNKS

Kid-friendly floorplans include slide-out bunkrooms complete with entertainment center. This model features a fold-down sofa and flip-up bunk as well as a half bath.



36RD5S



36RD5S Dinette with Wine Cabinet



36RD5S Kitchen



▲ The private living room is accessed through a beautifully detailed archway. Solid wood fascias are standard on all Cedar Creek models where others have vinyl wrapped foam. Touch and feel the difference.

CEDAR CREEK FEATURES



HIDE-A-BED

Pull out the inflatable 60" x 80" queen size air mattress from the hide-a-bed sofa and you've got comfortable sleeping quarters for family members or guests. The air mattress inflates and deflates easily and stores conveniently in the sofa's bottom drawer.



1. **OPTIONAL FREE STANDING TABLE WITH HIDDEN STORAGE DRAWER**
2. **HIDDEN STORAGE DINETTE CHAIRS**
3. **"SOFT TOP" VINYL STORM DOOR (CCEP*)**
4. **Luxurious SCULPTED SOLID SURFACE STYLE GALLEY AND LAVATORY COUNTERTOPS.**
Built-in sink covers are also included to allow for a continuous counter surface (optional).
5. **Optional DIRT DEVIL® CV950 central vac cleaning system with VacPan™ automatic dustpan at entry door.**
6. **The Cedar Creek SWITCH CONTROL CENTER** provides a convenient and attractive place to mount the controls and switches that control your RV (CCEP*).
7. **Your outside shower, black tank flush and water tank fills are located in a central DOCKING STATION with lock and thumb grip (CCEP*).**
8. **HIDDEN ANIMAL WATER AND FOOD BOWLS** are standard on all models.
9. **9100 SERIES A+E ELECTRIC AWNING (CCEP*)**
10. **WINEGARD™ HD READY PRE-WIRE** allows customers to conveniently add satellite systems with the proper wiring to split the signal between the living room and bedroom areas (CCEP*).
11. **KEY FAB REMOTE** for front landing legs, slide-outs, electric awning and (1) exterior and (1) interior entry light.

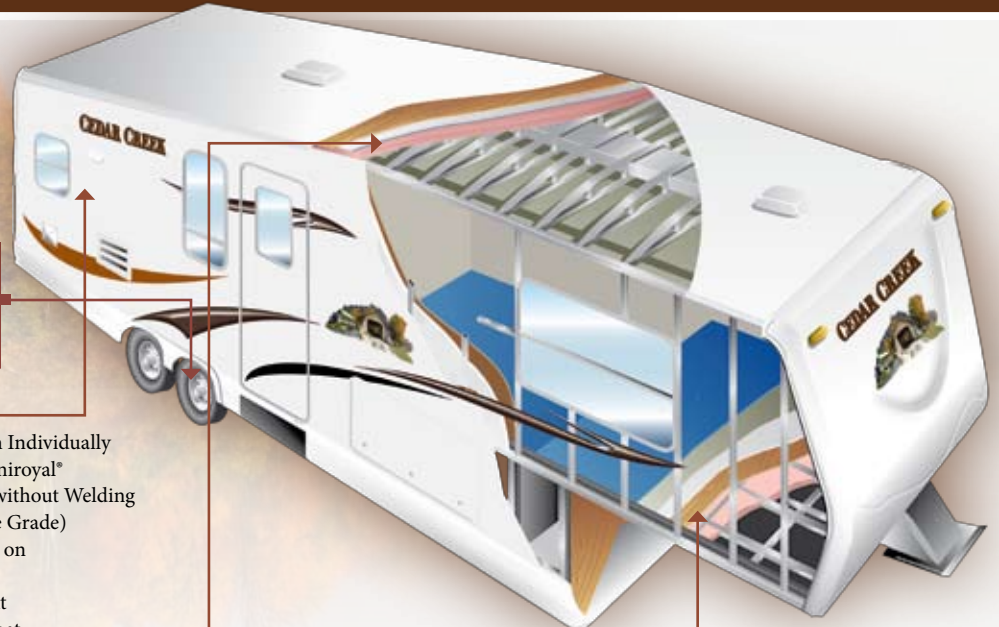
*CCEP: Cedar Creek Explorer Package

ALUMINUM FRAME CONSTRUCTION

State-of-the-art construction techniques along with top grade building components give Cedar Creek its reputation for long-lasting quality.

PERFORMANCE
Plus
GELCOAT
EXTERIORS

Equa-Flex™
Suspension
standard



Side Walls: R-Value = 9

- Handmade 2 x 2 - 16" (or less) OC Sidewalls with Individually Fastened Custom "L" Brackets Combined with Uniroyal® Silaprene Adhesives for a Strong Flexible Frame without Welding or Lamination. (475 PSI at 2" Per Minute, Marine Grade)
- True Owens Corning™ Performance Plus Gelcoat on all Exteriors — The Best of the Best in Fiberglass
- All Baggage Doors and Entry Doors are Made out of True Owens Corning™ Performance Plus Gelcoat to Prevent Uneven Aging of Your Unit
- Automotive UV Clear Coat Paint, Guaranteed for 7 Years, on all Refrigerator Vents, Microwave Vents, and Entry Door Window Frames, Preventing Early Discoloration
- Sidewalls are Bolted to the Floor with 5/16" x 6-1/2" Carriage Bolts at each Outrigger
- Glued R-7 Fiberglass Insulation Expanded to its Full Capacity within the Sidewall Frame
- Designed by Forest River, a New Unique Slide-Out Seal System for Tighter, Stronger Water Protection — First of its Class — Compare It!
- 5 Direction Insulation in all Slide-Out Rooms

Floors: R-Value = 17

- 3" Aluminum Frame Floor with In-Floor Heat Ducting and Custom "L" Brackets Combined with Uniroyal® Silaprene Adhesives
- 5/8" Tongue and Groove Plywood, Marine Grade
- Cambered 10" I Beam "Z" Frame with Large Support Outriggers and Full Length Welds
- The Tongue and Groove Plywood Floor is Attached to the Aluminum Frame with Silaprene and Screwed every 5"
- Darco Waterproof Underbelly
- Fully Enclosed 4' x 8' ABS Removable Panels for Easier Access into the Underbelly
- R-14 Fiberglass Insulation Only — Plywood, Vinyl, Carpet, Tank Heaters, Carpet Pad, etc. are not Included within These R Values

Roof: R-Value = 17

- 1/4" Foam Cor® Insulation Board Weather Barrier (R1 Value)
- Full Length 3/8" Wood Roof Decking for a Full Walk On Roof (Screwed - Not Stapled)
- R-14 (Fiberglass Insulation Only) — Roof Decking, Foam Cor®, and Rubber Membrane are not Included within This R-Value
- 2 x 2 — 16" OC - 4" Truss Roof Frame Combined with Uniroyal® Silaprene
- 2 Ply — Tuff Ply Rubber Roof Membrane with Built-In Fire Retardant
- Full Length Drip Rails with Spouts from the Front to the Rear
- Roof is Bolted to Sidewall with 5/16" x 3-1/2" Carriage Bolts
- New 3" Roof Radius



COLD ROOM TESTED TO ZERO DEGREE FAHRENHEIT WITH STANDARD INSULATION AND HEATING PADS WITH NO TANK FREEZING!

SPECIFICATIONS

	34TSA	34SATS	34RLSA	362BSA	36RE	36RD5S	36CKTS	36BHSE 10 th Anniversary Special Edition
Exterior Length	36' 8"	37' 6"	36' 8"	39'	39'	39' 6"	39'	39'
Exterior Height with Air Conditioner	12' 11"	12' 11"	12' 11"	12' 11"	12' 11"	12' 11"	12' 11"	12' 11"
Exterior Width	96"	96"	96"	96"	96"	96"	96"	96"
Front Bedroom Interior Height	80"	80"	80"	80"	80"	80"	80"	80"
Hitch Weight	1,987	1,760	2,085	1,880	2,431	1,763	2,389	2,270
Axle Dry Weight	9,274	9,551	9,484	9,622	9,664	10,563	9,687	10,310
Unloaded Vehicle Weight	11,260	11,311	11,569	11,502	12,095	12,416	12,076	12,590
GVWR	13,987	13,760	14,085	13,382	15,500	15,500	15,500	15,500
Gross Cargo Capacity	2,727	2,449	2,516	2,378	3,405	3,084	3,405	2,910
Dual Axles (2)	6,000# Straight	6,000# Straight	6,000# Straight	6,000# Straight	7,000# Straight	7,000# Straight	7,000# Straight	7,000# Straight
Wheel Size	16 x 6	16 x 6	16 x 6	16 x 6	16 x 8	16 x 8	16 x 8	16 x 8
Tire Size	X	X	X	X	■	■	■	■
Optional Awning Size	18'	18'	16'	21'	18'	18'	18'	18'
Furnace Size	35 BTU	35 BTU	35 BTU	35 BTU	35 BTU	42 BTU	42 BTU	35 BTU
Demand Fresh Water Capacity	64	64	63	64	64	64	64	64
Black and Gray Water Capacity	40/40/40	40/40/40	40/40/40	40/40/40	40/40/40	40/40/40	40/40/40	40/40/40
Sleeping Capacity	6	6	6	6	6	6	6	6

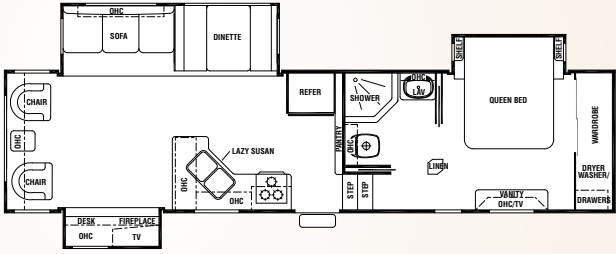
X LT235/85R16E

■ LT235/85R16G

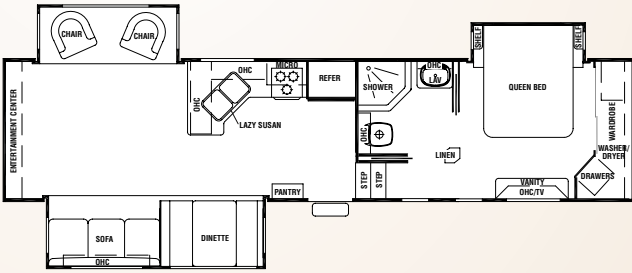
All weights listed are base weights. Weight capacities +/- 5%. NOTE: All fifth wheel lengths include extended pin box and 4" bumper.
*Model number of any particular unit does not necessarily reflect the overall length of the unit itself.

FLOORPLANS

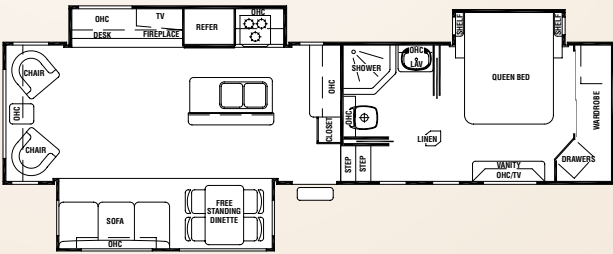
34TSA



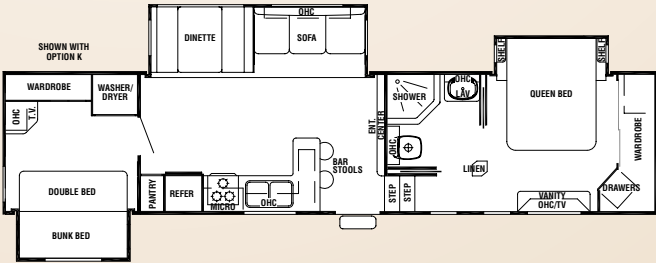
34SATS



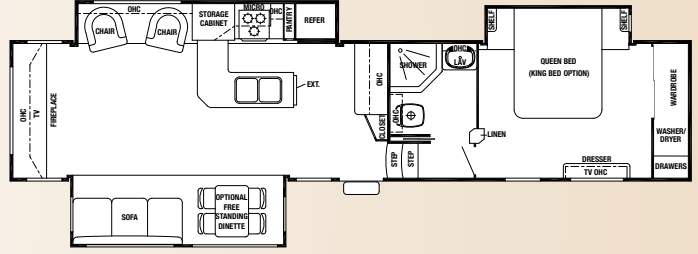
34RLSA



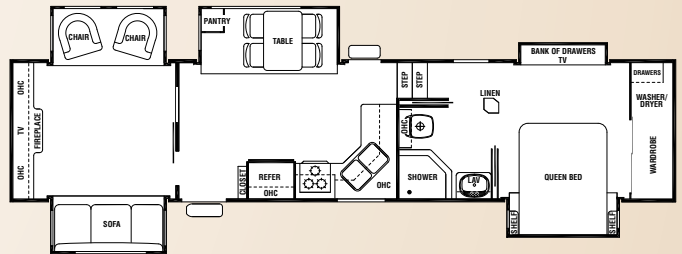
362BSA



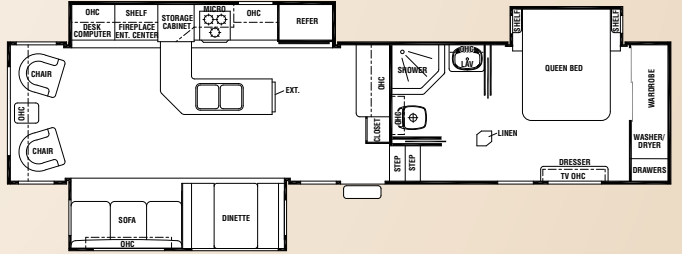
36RE



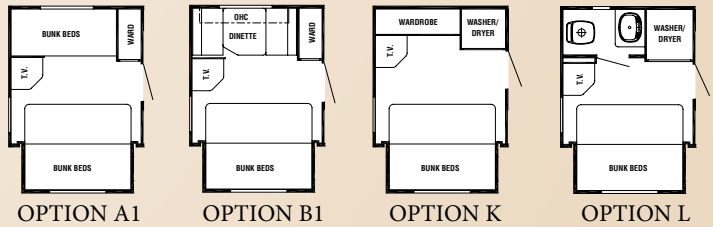
36RD5S



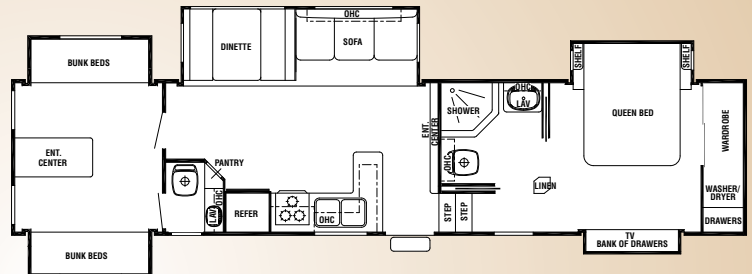
36CKTS



BEDROOM OPTIONS FOR 362BSA



36BHSE 10th Anniversary Special Edition



8 Cu. Ft. Refrigerator, 30" Microwave with 22" Oven, Fantastic Fan in the Kitchen with Thermostat, Cedar Creek's Famous All-Aluminum Super Structure, True Gel Coat Exterior with Chrome Rear Bumper, Electric Awning, 7,000# Axles, Equa-Flex, Docking Station, Aluminum Rims, Electric Front Jacks, Z-Frame Storage, Peek-A-Boo Animal Food Bowls, Selector Switch for Slide-Outs, 50 AMP with Washer/Dryer Prep, Serta Mattress, 15,000 Air Conditioner, 10 Gallon Water Heater, Prep for 2nd Air Conditioner, Cedar Creek Bronze Headboard, Silverback Bedspread with Body Pillow, 46" Compartment Doors, Entire Water Filtration System, Full Pantry Beside the Refrigerator, Heating Pads on all Tanks, 19" TV in Bedroom (Mandatory Option), 5 Slides, Solid Wood Fascia, Raised Panel Interior Doors, 1/2 Bath in Rear Bunk Room, Valance with Lambrequins in Living Room, Ceiling Fan with Light, 32" LCD Flat Panel TV, Switched Fantastic Fan in Bathroom (3 Speed), Porcelain Toilet, Hide-A-Bed with Air Mattress, Booth Dinette, Switch Control Panel, Soft Top Vinyl Storm Doors, Lighted Entry Step, *and Much, Much More - What else do you desire in a Fifth Wheel!*

INTERIOR DECOR OPTIONS



Wheat Tapestry



Desert Diamonds



Oak Leaf Beige



Santa Rosa Harvest



Rocky Road



Desert Sky

EXTERIOR GRAPHICS OPTIONS



Standard Graphics



Creek Side Paint

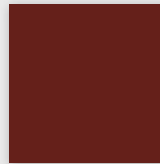


Custom Paint

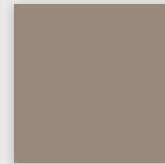


Shown in
Champagne AQ

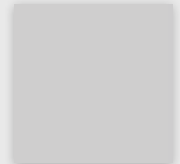
Choose one of the pre-selected paint colors available (Burgundy, Champagne AQ, or Silver Birch) or give Cedar Creek the paint code from your vehicle and we can paint the unit to match for no extra charge.



Burgundy



Champagne AQ



Silver Birch

OPTIONAL PACKAGES

CEDAR CREEK EXPLORER PACKAGE:

(1) 32" LCD Flat Panel, HD Television, Full Dolby Digital, Dolby Prologic, Surround Sound Stereo with DVD/CD/Tuner, Central Docking Station, 30" Residential Microwave, "Soft Top" Vinyl Storm Doors, Hide-a-Bed with Air Mattress, True Owens Corning Gelcoat Exterior, Black Tank Flush, 16" Tires, Shock Absorbers, Rear Cap, 10 Gallon DSI Water Heater, 15,000 BTU Air Conditioner, Large Surface 12V. Heating Pads on all Tanks, Fantastic Fan with Rain Sensor in the Kitchen, 9100 Electric Awning, Rear Electric Jacks, Tinted Safety Glass, Entire Water Filtration System, Cedar Creek Switch Control Center, Winegard® HD Ready Pre-Wire

10TH ANNIVERSARY SPECIAL FEATURE PACKAGE:

Key Fab Remote System For Front Landing Legs, Slide-Outs, Electric Awning & (1) Exterior & (1) Interior Entry Light, Larger Baggage Doors, New Window Valance Treatments with Decorative Wood Trim Kits, All New Wood Fascia, Original 10th Anniversary Howard Miller Clock, (1) 10th Anniversary Pillow, Residential Towel & Toilet Paper Holders, & an Exclusive 10th Anniversary Key Chain. (Units Produced after 9/1/08)

STANDARDS AND OPTIONS

EXTERIOR FEATURES

#30 Gas Bottles with Bottle Cover & Automatic Change Over
(2) Scare Lights — Door Side & Off Door Side with Separate Wall Switches
110V. Outlet in Below Deck Front Storage Area
12V. Battery Disconnect
Large Surface 12V. Heating Pads on All Holding & Fresh Water Tanks with Thermostat (CCEP)
15,500 Lb. Rated Extended Pin Box
16" Tire Underbelly Carrier
12V Storage Lights in Below Bath Deck & Front Storage Areas
30" High Gelcoat Compartment Doors for Side-to-Side Storage, Turning Your Front Storage Area into a Front Storage Shed
30" Radius Front Door Entry with Deadbolt Lock & Drip Cap with "Soft Top" Entry Storm Doors That Allow Full View to the Outdoors
55 Amp Power Converter
All Exterior Compartment Doors, Exterior Lights & Corners are Sealed with Butyl Rubber & Silicone — Proven to be the Best Sealant in the Industry (No Putty or Foam Tap)
9100 Series Electric Awning
Black Tank Flush
Break Away Switch
Cambered 10" I-Beam with Unique "Z" Frame Storage
Convenient Single Access Phone Jack & Cable TV Connections
Enclosed & Double Layer Insulated Underbelly (R14 + 5)
Flush Floor Bath & Bedroom Deck
Folding White Enamel Assist Handle at Entry Door
Front Power Electric Jacks with Quick Release Jack Pins
Hard Heat Duct Boot Leading into Your Front Upper Deck for 2x More Efficient Delivery of Heat
Hitch Light
Hydraulic Front Landing Jacks on 36CKQS & 37RDQS
Large White Framed Dark Tinted Jalousie Clamp Ring Windows with Butyl Rubber Seals for Superior UV & Weather Protection
Lighted Entry Step
True Gelcoat Lockable Clamp Ring Exterior Baggage Doors with Thumb Grip & Door Catch
Opaque Jalousie Window in all Toilet Areas
Cedar Creek Grist Mill Custom Artwork Graphics
"Soft Top" Vinyl Storm Doors
Porch Light
Quick & Easy Ultra Lube Axles, Adjustable Hanger Plates & Four Wheel Electric Breaks
Radius Wrapped Bottom Metal Skirt
Silver Metallic Clear Coat Wheels (No Rusting White Rims)
Single Access Fresh Water Fill & City Water Hook-Up with Lock

Smooth, Easy Operating, Easy Grip, Entry Steps — Extra Wide for Confident Footing
Taillight Assembly with Back-Up Lights Included
UV Automotive Paint Coating is Placed on Refrigerator Vents to Prevent Premature Color Changes.
White Enamel Rear Ladder

INTERIOR FEATURES

BEDROOM

(1) Ceiling Fluorescent Light
(9) 8" Deep, Drawers in Main Bedroom Area
Bedroom Roof Vent
Bedroom Slide — 80" Queen Bed (Optional 80" King Bed), 2 x 2 Finished Bed Base with Gas Lifts, Side Ventilation Windows, Designer Residential Style Headboard, with a Large Capacity Storage Area under the Bed
Ceiling Mounted, Individually Switched, Overhead Reading Lights
Central Television Cabinet Location
Full 6' 8" of Headroom
Luxurious Bedspread which includes Elastic Mattress Grips, Pillows, & Shams with Solid Wood Shelves
Soft Gray Mirrored Closet Doors that Conceal One of the Deepest Closets in the Industry
Swivel Mount TV Antenna with Power Booster
Serta® Pillow Top Residential Mattress
Solid Wood Dresser Top (No Formica)

KITCHEN

(1) Fluorescent Light Over Sink Area
9 Cu. Ft. Refrigerator with Exterior Digital Temperature Gauge & Thermostat
30" Over the Range Microwave with Built-in Vent
New Laminate Countertop with a 2" Solid Oak Edge
60" x 48" Window in Dinette Area
Congoleum® Diamondflor® Armorguard® Vinyl Floor Covering
Crown Molding Complementing all Overhead Cabinets in Kitchen Area
Durable, Residential Stainless Steel Sink with Full Twin Deep Wells & includes a High Rise Swivel Spout & Vegetable Sprayer & (1) Sink Cover
Entire Water Filtration System which Includes Tank & City Water — Even Your Shower Water is Filtered
Full 42" Easy Entry, Double Pedestal Dinette Table with 2" Solid Oak Edging
Larger 64-Gallon Demand Water System
Lazy Susan (Where Applicable)
Pantry (Where Applicable)
Residential Style Roller Drawer Guides with Travel Locks (No Binding)
Silverware Drawer
Solid Ash Drawer Fronts with Baltic Birch Sides and Ends Convenient 5" & 8" Sizes
Toe Kicks at the Base of the Kitchen Cabinet

Hoosier Cabinet (34RLSA, 36CKTS, 36RE) with 2' Extendable Countertop & Appliance Garage

MISC. APPLIANCES

LP Gas Detector
Carbon Monoxide Detector
Smoke Detector
Single Residential Digital Thermostat for Heating and Cooling
Solid State 55 Amp Power Converter
Suburban 30,000 (Minimum) BTU Furnace
Wall Mount Monitor Panel
Water Heater By-Pass System for Winterization

LIVING ROOM

2-3 Ceiling Fluorescent Lighting (Where Applicable)
35" x 9" "SKYVIEW" Side Window in Living Area
Carbon Monoxide Detector
Ceiling Fan with Light
Create-A-Breeze Fantastic Fan with Thermostat & Rain Sensor in the Kitchen
Day/Night Shades
Fireplace (N/A 36BH5S)
Fluted Hardwood Main Slide Fascia Supported by Oak Columns & Post Pad at Carpet
Lambrequin Style Valance with Curtains Throughout Except Bedroom
LP Detector
Main Slide-Room Height 6' 7"
Pre-Drilled & Counter Sunk Fastened Cabinetry with Lumber-Core Cabinet Stiles
Queen Ann Style End Table (Where Available)
Smoke Detector
Solid Ash, Cathedral Style, Cabinets Doors with Heavy Duty Hinges, with Residential Handles & Knobs for a Beautiful Crisp Clean Look
Trackless Plush Pile Carpeting in All Living Room & Bedroom Areas
TV Cable, Satellite, & Phone/Data Port Jack in Living Area
Upgraded Lighting at Sofa & Decorative Overhead Dinette Light

BATHROOM

(1) Fluorescent Ceiling Light in the Hall Areas
2" — 10 Blade Bathroom Breeze Power Bath Vent with Convenient Wall Switch
3 Tier Bath Towel Rack
6 Panel — Embossed Wood Grain Passage Doors with Residential Door Handles
Large Bathroom Mirror Medicine Cabinet with Overhead Make-Up Lights
One Piece Molded, Residential Style, Fiberglass Shower with Seat That Won't Deteriorate with Age
Skylight Over Tub
Foot Flush Porcelain Toilet
Wall Switched Ceiling
Lights in Key Locations

JUST A FEW OF THE ADDITIONAL OPTIONS

"Quick Draw" Rear Self Leveling Jacks
2nd Penguin Air Conditioner for Two Total
12 Cu. Ft. Side-by-Side Refrigerator 34RLSA, 34SATS, 34TSA, 36RD5S)
18 Cu. Ft. Electric Refrigerator with Inverter
19" LCD Television with Tip-Out Mounting Bracket for Front Bedroom Only
30" Amana Convection Oven/ Microwave with 3 Burner Cook top
36" Corner Bath Tub with Seat
50 Amp Service Only
50 Amp Service with Washer/Dryer Prep
72" x 80" King Size Bed with Serta® Mattress
A & E Electric One Touch Electric Awning with Remote & Wind Sensor
Brace & Wire for 2nd Air Conditioner
Create-A-Breeze Fantastic Fans with Thermostat & Rain Sensor in the Bedroom Area
Custom Paint (Truck Color Matching Available)
Creekside Lower Body Custom Paint (Truck Color Matching Available)
Free Standing Table with Extension, & Hidden Storage Chairs
Exterior 12 Volt Stereo System
Decorative 5 Pillow Package
Deluxe Aluminum Wheels
Dirt Devil® Central Vacuum System with Vac Dustpan
Electric Dump Valves
Jack-Knife Sofa Replacing Bottom Bed with Hinged Upper Bunk
Leather La-Z-Boy™ Rocker Recliners
LP Generator Prep with Carbon Monoxide Detector (Requires 50 Amp Service)
Luxurious Sculpted Solid Surface Style Galley & Lavatory Countertops. (Includes Built-In Sink Covers, Pull Out Faucet/Sprayer and Continuous Color Sinks)
Combination Washer/Dryer
Stackable Washer & Dryer — Wired Individually to Allow Simultaneous Wash & Dry
Mirrored Bath Door
Onan 5.5 Marquis Gold LP Generator
Outside Shower
Safety Glass
Selector Switches for Slide Rooms
Slide Room Awning Toppers
Thermal Pane Windows
Trailair™ Air Ride Hitch Coupler
Trailair™ Center Point Air Ride Suspension
Voyager Rear Observation System with 5.6 LCD Monitor, 12V Accessory Plug, Receiver Transmitter, & Rear Color Camera

Thank you TO OUR LOYAL CUSTOMERS



As Cedar Creek celebrates our 10th anniversary, we want to thank our loyal customers all over the world who have made our success possible. For 10 years, we've been building the best fifth wheels on the market. You don't survive long in this business if you don't give your customers what they want and deserve. Our 10th anniversary is testimony to the quality of our products and our responsiveness to your needs. We're honored you have shared in the journey with us.



Forest River
is proud to offer

**ROADSIDE
ASSISTANCE***

by Coach-Net®

Travel Trailers

Tent Campers

Fifth Wheels

Motorhomes

CEDAR CREEK



Forest River, Inc.
501 Hawpatch Road / Topeka, IN 46571
Ph: 260-593-2404 / Fax: 260-593-2447
On the web at: www.forestriverinc.com

YOUR CEDAR CREEK DEALER

All illustrations and specifications contained in this literature are based on the latest product information at the time of publication. Forest River, Inc. reserves the right to make changes in prices, colors, materials, equipment and specifications at any time without notice and assumes no responsibility for any error in this literature. All units are shipped F.O.B. Topeka, Indiana.
• CONSULT YOUR LOCAL DEALER FOR WARRANTY INFORMATION

F-66-192 2008 Forest River, Inc. Litho U.S.A.